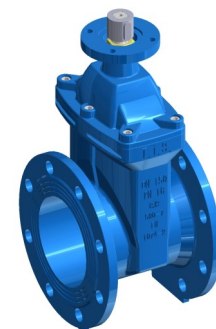




PN 10 Serie 14 - Art. A020 PMOT-S
 PN 16 Serie 14 - Art. A021 PMOT-S
 PN 10 Serie 15 - Art. A022 PMOT-S
 PN 16 Serie 15 - Art. A023 PMOT-S



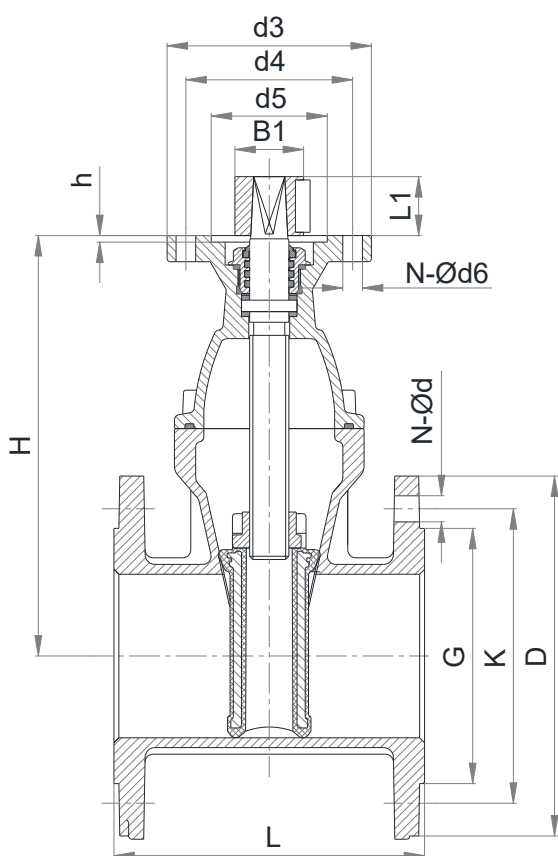
**ZASUWA KOŁNIERZOWA MIĘKKOUSZCZELNIONA PN10/16
 DO WSPÓŁPRACY Z NAPĘDEM ELEKTRYCZNYM LUB / I PRZEKŁADNIĄ
 SOFT SEATED GATE VALVE WITH MOTOR DRIVE PREARRANGEMENT**

ZASTOSOWANIE:

W sieciach i instalacjach przesyłu wody oraz innych płynów chemicznie obojętnych

APPLICATION:

Drinkable water supply and distribution, waste water treatment and sewerage.



| CECHY PRODUKTU - MAIN FEATURES | |
|--|----------------------------------|
| WYKONANIE: | EN 1171, EN 1074-1 ed EN 1074-2 |
| DŁUGOŚĆ ZABUDOWY: | EN 558 Serie14-15 |
| KOŁNIERZE: | EN 1092-2 |
| PRZYŁĄCZE NAPĘDU: | ISO 5210 |
| PRÓBY ODBIORCZE: | EN 12266-1 |
| TEMP. PRACY: | Max. +70°C |
| DESIGN STANDARD: | EN 1171, EN 1074-1 and EN 1074-2 |
| FACE TO FACE: | EN 558 Series14-15 |
| FLANGES: | EN 1092-2 |
| TOP FLANGE: | ISO 5210 |
| TESTS: | EN 12266-1 |
| WORKING TEMP.: | Max. +70°C |
| Przyłącze napędu zgodnie z ISO 5210. | |
| Valve actuator attachment according to ISO 5210. | |

| MOMENT OBROTOWY - BARESHAFT TORQUE | | | |
|------------------------------------|----|-----|-----|
| DN | Nm | DN | Nm |
| 40 | 25 | 125 | 80 |
| 50 | 30 | 150 | 100 |
| 65 | 40 | 200 | 150 |
| 80 | 50 | 250 | 200 |
| 100 | 70 | 300 | 250 |

| ZABEZPIECZENIE POWIERZCHNI - COATING |
|---|
| Farbą epoksydową koloru niebieskiego RAL 5015 grubości min. 250µm. External/internal FBE coating process with epoxy resin powder of blue colour RAL 5015 and thickness of 250µm. |

| DN | G | K | | D | | L | | H | n-Ød | | d3 | d4 | d5 | N-Ød6 | h | B1 | Key | L1 | Ilość obr. No. of turns |
|-----|-----|------|------|------|------|-----|-----|-------|-------|-------|-----|-----|-----|-------|---|----|-----|----|----------------------------|
| | | PN10 | PN16 | PN10 | PN16 | S14 | S15 | | PN10 | PN16 | | | | | | | | | |
| 40 | 84 | 110 | 110 | 150 | 150 | 140 | 240 | 173.5 | 4-19 | 4-19 | 125 | 102 | 71 | 4-12 | 4 | 42 | 12 | 28 | 11.0 |
| 50 | 99 | 125 | 125 | 165 | 165 | 150 | 250 | 178.5 | 4-19 | 4-19 | 125 | 102 | 71 | 4-12 | 4 | 42 | 12 | 28 | 13.5 |
| 65 | 118 | 145 | 145 | 185 | 185 | 170 | 270 | 203.0 | 4-19 | 4-19 | 125 | 102 | 71 | 4-12 | 4 | 42 | 12 | 28 | 17.5 |
| 80 | 132 | 160 | 160 | 200 | 200 | 180 | 280 | 225.5 | 8-19 | 8-19 | 125 | 102 | 71 | 4-12 | 4 | 42 | 12 | 28 | 21.5 |
| 100 | 156 | 180 | 180 | 220 | 220 | 190 | 300 | 257.0 | 8-19 | 8-19 | 125 | 102 | 71 | 4-12 | 4 | 42 | 12 | 36 | 21.5 |
| 125 | 184 | 210 | 210 | 250 | 250 | 200 | 325 | 299.0 | 8-19 | 8-19 | 125 | 102 | 71 | 4-12 | 4 | 42 | 12 | 36 | 26.5 |
| 150 | 211 | 240 | 240 | 285 | 285 | 210 | 350 | 344.5 | 8-23 | 8-23 | 125 | 102 | 71 | 4-12 | 4 | 42 | 12 | 36 | 32.0 |
| 200 | 266 | 295 | 295 | 340 | 340 | 230 | 400 | 457.5 | 8-23 | 12-23 | 175 | 140 | 102 | 4-18 | 5 | 60 | 18 | 42 | 34.5 |
| 250 | 319 | 350 | 355 | 395 | 405 | 250 | 450 | 533.5 | 12-23 | 12-28 | 175 | 140 | 102 | 4-18 | 5 | 60 | 18 | 42 | 43.0 |
| 300 | 370 | 400 | 410 | 445 | 460 | 270 | 500 | 610.5 | 12-23 | 12-28 | 175 | 140 | 102 | 4-18 | 5 | 60 | 18 | 42 | 51.5 |