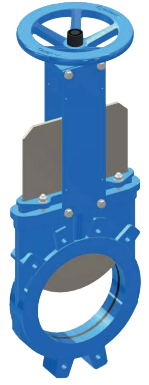


SARACINESCA A GHIGLIOTTINA BIDIREZIONALE MONOBLOCCO ASTA NON SALIENTE PN10
MONOBLOCK KNIFE GATE VALVE BIDIRECTIONAL TYPE NON RISING STEM PN10

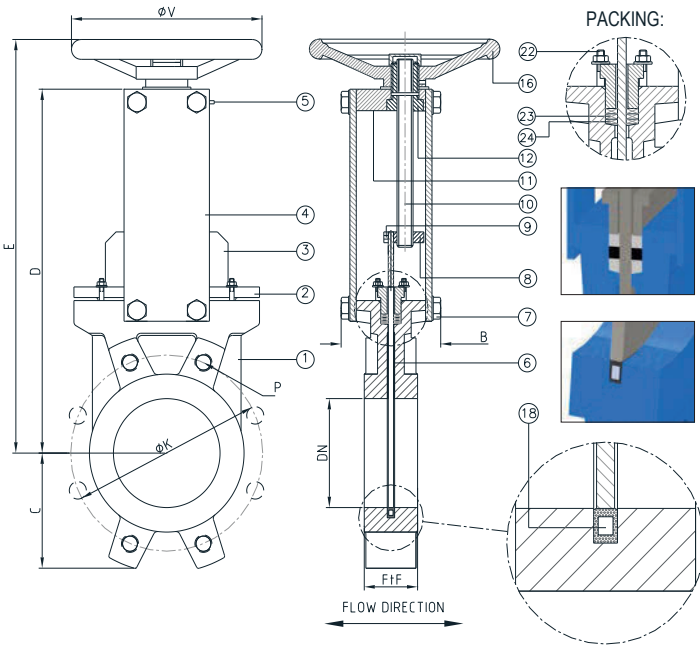


APPLICAZIONE:

Fornitura e distribuzione acqua, trattamento acque reflue e sistemi fognari, settori industriali.

APPLICATION:

Water supply and distribution, waste water treatment and sewerage.



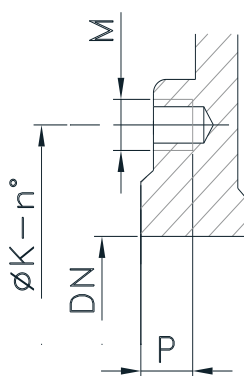
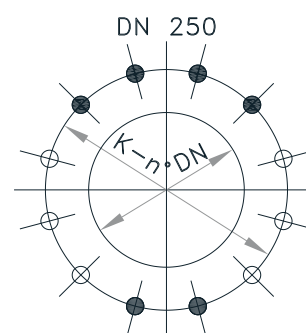
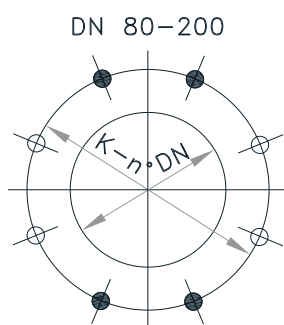
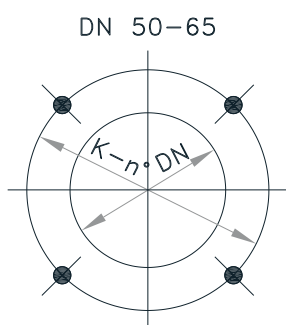
CARATTERISTICHE PRINCIPALI - MAIN FEATURES	
FLANGE:	Foratura secondo EN 1092-2 PN10
COLLAUDI:	EN12266-1 in accordo alla PS della valvola
TEMPERATURA ESERCIZIO:	Max. ≤ +90°C
PRESSIONE DI ESERCIZIO:	Max = 10 bar Min = 1 bar (a richiesta 0.1 bar)
FLANGES:	Drilled according to EN 1092-2 PN10
TESTS:	EN 12266-1 according to the valve PS
WORKING TEMPERATURE:	Max. ≤ +90°C
WORKING PRESSURE:	Max = 10bar Min = 1 bar (on request 0.1 bar)

	COMPONENTI - PARTS	MATERIALI - MATERIALS
1	CORPO BODY	EN-GJL 250 EN-GJL 250
2	PREMISTOPPA PACKING GLAND	ALLUMINIO ALUMINUM
3	PARATIA KNIFE	ACCIAIO INOX AISI 304L AISI 304L STAINLESS STEEL
4	SUPPORTO SUPPORT	ACCIAIO STEEL
5	INGRASSATORE GREASER	STANDARD STANDARD
6	GUIDE INTERNAL GUIDE	POLIETILENE POLYETHYLENE
7	BULLONI BOLTS	ACCIAIO INOX A2-70 A2-70 STAINLESS STEEL
8	MADREVITE STEM NUT	BRONZO BRONZE
9	BULLONI BOLTS	ACCIAIO INOX A2-70 A2-70 STAINLESS STEEL
10	ASSE STEM	ACCIAIO INOX AISI 304 AISI 304 STAINLESS STEEL
11	SUPPORTO SUPPORT BRIDGE	ACCIAIO STEEL
12	MADREVITE STEM NUT	OTTONE BRASS
16	VOLANTINO HANDWHEEL	EN-GJL 250 EN-GJL 250
18	GUARNIZIONE TENUTA SEAT	GOMMA EPDM con rinforzo in acciaio EPDM RUBBER with steel reinforced core
22	BULLONI BOLTS	ACCIAIO INOX A2-70 A2-70 STAINLESS STEEL
23	O-RING BADERNA PACKING O-RING	EPDM EPDM
24	BADERNA PACKING	CORDA TEFLONATA SYNETIC FIBERS + PTFE

DN	K	n-M	FtF	B	C	D	E	ØV
50	125	4-M16	40	82	65	238	285	200
65	145	4-M16	40	82	70	266	310	200
80	160	8-M16	50	85	92	291	336	200
100	180	8-M16	50	85	107	337	382	200
125	210	8-M16	50	92	120	366	430	250
150	240	8-M20	60	92	130	416	480	250
200	295	8-M20	60	120	158	523	595	300
250	350	12-M20	70	120	200	622	697	300

RIVESTIMENTO - COATING
Esterno/interno con polvere epossidica di colore blu RAL 5015 e spessore 100µm.
External/internal with epoxy resin powder of blue colour RAL 5015 and thickness of 100µm.

DETTAGLIO DELLE FLANGE EN1092-2 PN10
EN1092-2 PN10 FLANGE DETAILS



DN	øK	n°	M	P			
50	125	4	M16	10	4	-	-
65	145	4	M16	10	4	-	-
80	160	8	M16	10	4	-	4
100	180	8	M16	10	4	-	4
125	210	8	M16	10	4	-	4
150	240	8	M20	14	4	-	4
200	295	8	M20	14	4	-	4
250	350	12	M20	18	6	-	6



FORO FILETTATO CIECO
 BLIND TAPPED BOLT HOLES



FORO FILETTATO PASSANTE
 TAPPED TROUGH



FORI PASSANTI
 TROUGH GOING BORE