

SARACINESCA A GHIGLIOTTINA BIDIREZIONALE MONOBLOCCO ASTA SALIENTE PN10
MONOBLOCK KNIFE GATE VALVE BIDIRECTIONAL TYPE RISING STEM PN10

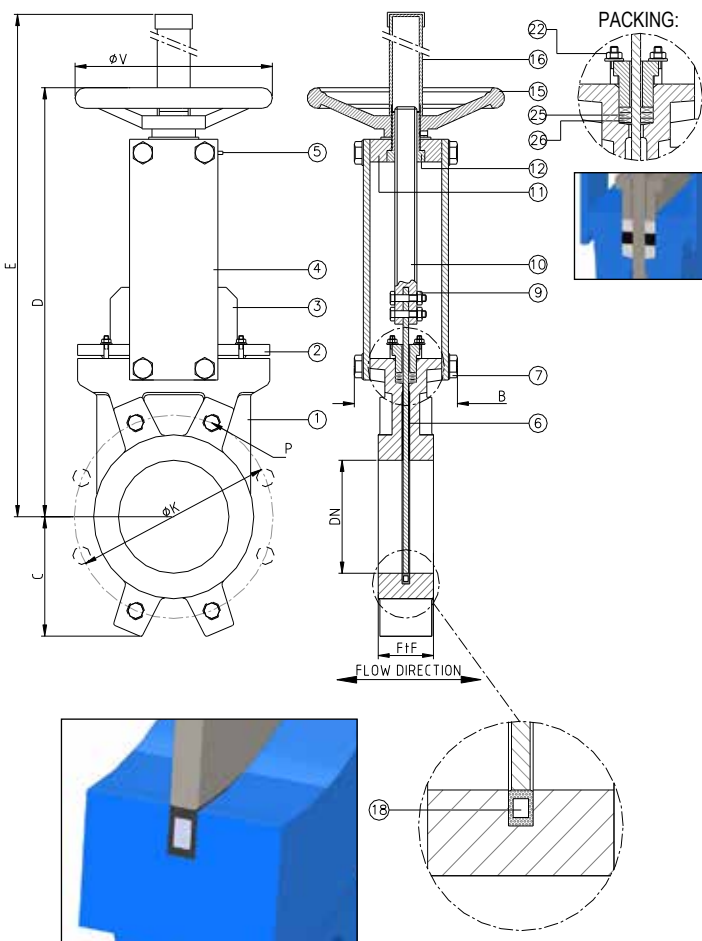


APPLICAZIONE:

Fornitura e distribuzione acqua, trattamento acque reflue e sistemi fognari, settori industriali.

APPLICATION:

Water supply and distribution, waste water treatment and sewerage.



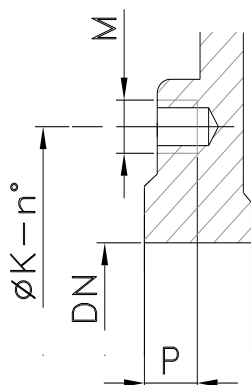
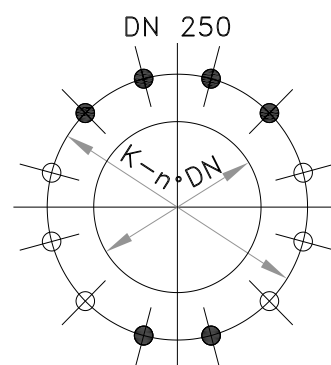
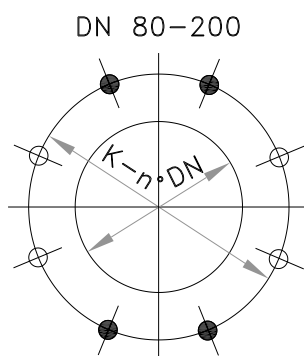
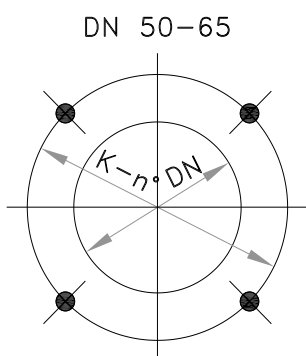
CARATTERISTICHE PRINCIPALI - MAIN FEATURES	
FLANGE:	Foratura secondo EN 1092-2 PN10
COLLAUDI:	EN12266-1 in accordo alla PS della valvola
TEMPERATURA ESERCIZIO:	Max. ≤ +90°C
PRESSIONE DI ESERCIZIO:	Max = 10 bar Min = 1 bar (a richiesta 0.1 bar)
FLANGES:	Drilled according to EN 1092-2 PN10
TESTS:	EN 12266-1 according to the valve PS
WORKING TEMPERATURE:	Max. ≤ +90°C
WORKING PRESSURE:	Max = 10bar Min = 1 bar (on request 0.1 bar)

	COMPONENTI - PARTS	MATERIALI - MATERIALS
1	CORPO BODY	EN-GJL 250 EN-GJL 250
2	PREMISTOPPA PACKING GLAND	ALLUMINIO ALUMINUM
3	PARATIA KNIFE	ACCIAIO INOX AISI 304L AISI 304L STAINLESS STEEL
4	SUPPORTO S UPPORT	ACCIAIO STEEL
5	INGRASSATORE GREASER	STANDARD STANDARD
6	GUIDE INTERNAL GUIDE	POLIETILENE POLYETHYLENE
7 - 9	BULLONI BOLTS	ACCIAIO INOX A2-70 A2-70 STAINLESS STEEL
10	ASSE STEM	ACCIAIO INOX AISI 304 AISI 304 STAINLESS STEEL
11	SUPPORTO SUPPORT BRIDGE	ACCIAIO STEEL
12	MADREVITE STEM NUT	OTTONE BRASS
15	VOLANTINO HANDWHEEL	EN-GJL 250 EN-GJL 250
16	TUBO RIPARATORE PROTECTIVE PIPE	ACCIAIO STEEL
18	GUARNIZIONE TENUTA SEAT	GOMMA EPDM con rinforzo in acciaio EPDM RUBBER with steel reinforced core
22	BULLONI BOLTS	ACCIAIO INOX A2-70 A2-70 STAINLESS STEEL
23	O-RING BADERNA PACKING O-RING	EPDM EPDM
24	BADERNA PACKING	CORDA TEFLONATA SYNTETIC FIBERS + PTFE

DN	K	n-M	FtF	B	C	D	E	ØV	W (kg)
50	125	4-M16	40	90	65	284	439	200	8
65	145	4-M16	40	90	68	308	464	200	9
80	160	8-M16	50	90	90	334	490	200	10
100	180	8-M16	50	90	105	374	536	200	12
125	210	8-M16	50	100	120	413	636	250	15
150	240	8-M20	60	100	135	465	686	250	19
200	295	8-M20	60	120	170	582	879	300	32
250	350	12-M20	70	120	205	682	1021	300	44

RIVESTIMENTO - COATING
Esterno/interno con polvere epossidica di colore blu RAL 5015 e spessore 100µm.
External/internal with epoxy resin powder of blue colour RAL 5015 and thickness of 100µm.

DETTAGLIO DELLE FLANGE EN1092-2 PN10
EN1092-2 PN10 FLANGE DETAILS



DN	øK	n°	M	P			
50	125	4	M16	10	4	-	-
65	145	4	M16	10	4	-	-
80	160	8	M16	10	4	-	4
100	180	8	M16	10	4	-	4
125	210	8	M16	10	4	-	4
150	240	8	M20	14	4	-	4
200	295	8	M20	14	4	-	4
250	350	12	M20	18	6	-	6

FORO FILETTATO CIECO
BLIND TAPPED BOLT HOLES

FORO FILETTATO PASSANTE
TAPPED TROUGH

FORI PASSANTI
TROUGH GOING BORE