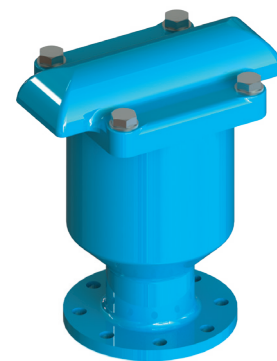


PN 10 - ART. E050

PN 16 - ART. E051



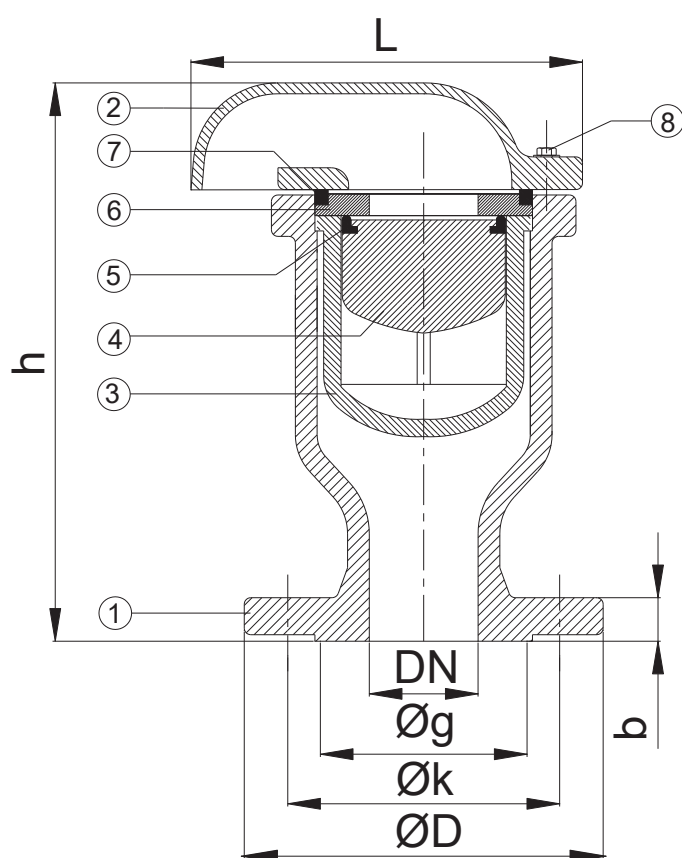
SFIATO SINGOLO GALLEGGIANTE PN10-PN16
AIR RELEASE VALVE SINGLE CHAMBER PN10-PN16

APPLICAZIONE:

Fornitura, raccolta e distribuzione di acqua.

APPLICATION:

Supply, collection and distribution of water.



CARATTERISTICHE PRINCIPALI - MAIN FEATURES	
NORMA PROGETTO:	EN 1074-1 e EN 1074-4
FLANGE:	Foratura secondo EN 1092-2
COLLAUDI:	EN 12266-1
TEMP. ESERCIZIO:	Max. +80°C
PRESSIONE MIN. DI ESERCIZIO:	0,2 bar
DESIGN STANDARD:	EN 1074-1 and EN 1074-4
FLANGES:	Drilling according to EN 1092-2
TESTS:	EN 12266-1
WORKING TEMP.:	Max. +80°C
MIN. WORKING PRESSURE:	0,2 bar

	COMPONENTI - PARTS	MATERIALI - MATERIALS
1	CORPO BODY	EN - GJS 400 - 15 EN - GJS 400 - 15
2	COPERCHIO COVER	EN - GJS 400 - 15 EN - GJS 400 - 15
3	GABBIA CAGE	POLIAMMIDE 6 POLYAMID 6
4	GALLEGGIANTE FLOATER	POLIPROPILENE FOAMED POLYPROPYLENE
5	O-RING O-RING	EPDM EPDM
6	DISCO DISC	OTTONE BRASS
7	O-RING O-RING	EPDM EPDM
8	VITE E RONDELLA SCREW & WASHER	ACCIAIO 8.8 STEEL 8.8

RIVESTIMENTO - COATING
Esterno/interno con polvere epossidica di colore blu RAL 5015 e spessore 250µm.
External/internal FBE coating process with epoxy resin powder of blue colour RAL 5015 and thickness of 250µm.

ART.	E050							E051						
DN	50	65	80	100	125	150	200	50	65	80	100	125	150	200
L	180	180	180	265	265	265	345	180	180	180	265	265	265	345
h	260	260	260	320	320	320	450	260	260	260	320	320	320	450
øD	165	185	200	220	250	285	340	165	185	200	220	250	285	340
øk	125	145	160	180	210	240	295	125	145	160	180	210	240	295
øg	99	118	132	156	184	211	266	99	118	132	156	184	211	266
n x ød	4x19	4x19	8x19	8x19	8x19	8x23	8x23	4x19	4x19	8x19	8x19	8x19	8x23	12x23
b	19	19	19	19	19	19	20	19	19	19	19	19	19	20
Viti / Bolt	M16	M16	M16	M16	M16	M20	M20	M16	M16	M16	M16	M16	M20	M20
Peso / weight (kg)	10.5	12	12	24	26	30	54	10.5	12	12	24	26	30	54

PN 25 - ART. E053

PN 40 - ART. E054



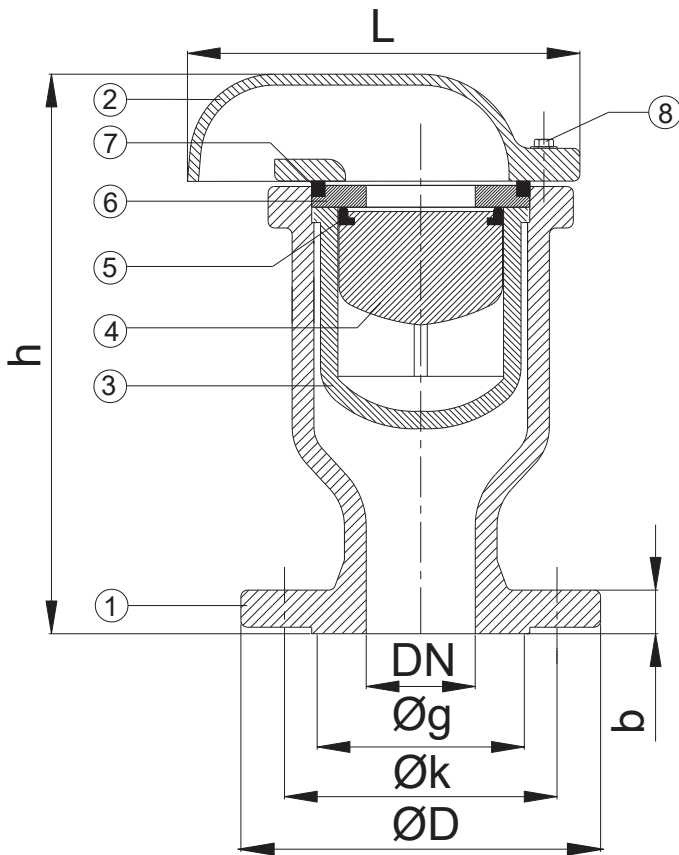
SFIATO SINGOLO GALLEGGIANTE PN25-PN40
AIR RELEASE VALVE SINGLE CHAMBER PN25-PN40

APPLICAZIONE:

Fornitura, raccolta e distribuzione di acqua.

APPLICATION:

Supply, collection and distribution of water.



CARATTERISTICHE PRINCIPALI - MAIN FEATURES	
NORMA PROGETTO:	EN 1074-1 e EN 1074-4
FLANGE:	Foratura secondo EN 1092-2
COLLAUDI:	EN 12266-1
TEMP. ESERCIZIO:	Max. +80°C
PRESSIONE MIN. DI ESERCIZIO:	0,2 bar
DESIGN STANDARD:	EN 1074-1 and EN 1074-4
FLANGES:	Drilling according to EN 1092-2
TESTS:	EN 12266-1
WORKING TEMP.:	Max. +80°C
MIN. WORKING PRESSURE:	0,2 bar

	COMPONENTI - PARTS	MATERIALI - MATERIALS
1	CORPO BODY	EN - GJS 400 - 15 EN - GJS 400 - 15
2	COPERCHIO COVER	EN - GJS 400 - 15 EN - GJS 400 - 15
3	GABBIA CAGE	POLIAMMIDE 6 POLYAMID 6
4	GALLEGGIANTE FLOATER	POLIPROPILENE FOAMED POLYPROPYLENE
5	O-RING O-RING	EPDM EPDM
6	DISCO DISC	OTTONE BRASS
7	O-RING O-RING	EPDM EPDM
8	VITE E RONDELLA SCREW & WASHER	ACCIAIO 8.8 STEEL 8.8

RIVESTIMENTO - COATING	
Esterno/interno con polvere epossidica di colore blu RAL 5015 e spessore 250µm.	
External/internal FBE coating process with epoxy resin powder of blue colour RAL 5015 and thickness of 250µm.	

ART.	E053							E054						
	50	65	80	100	125	150	200	50	65	80	100	125	150	200
DN	50	65	80	100	125	150	200	50	65	80	100	125	150	200
L	180	180	180	265	265	265	345	180	180	180	265	265	265	345
h	260	260	260	320	320	320	450	260	260	260	320	320	320	450
øD	165	185	200	235	270	300	360	165	185	200	235	270	300	375
øk	125	145	160	190	220	250	310	125	145	160	190	220	250	320
øg	99	118	132	156	184	211	274	99	118	132	156	184	211	284
n x ød	4X19	8X19	8X19	8X23	8X28	8X28	12X28	4X19	8X19	8X19	8X23	8X28	8X28	12X31
b	19	19	19	19	19	20	22	19	19	19	19	23.5	26	30
Viti / Bolt	M16	M16	M16	M20	M24	M24	M24	M16	M16	M16	M20	M24	M24	M27
Peso / weight (kg)	11.0	12.0	14.5	24.5	27	31.5	56.0	11.0	12.0	14.5	24.5	27	31.5	57.0