

# MAIN FUNCTIONS

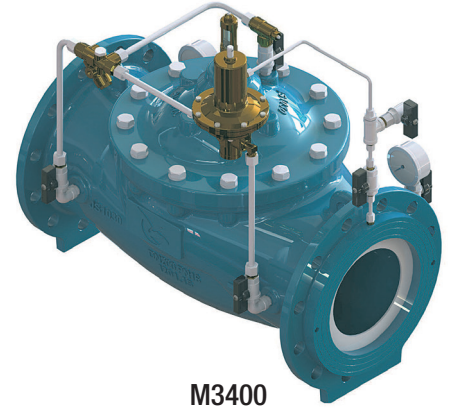
NUOVAL LINE



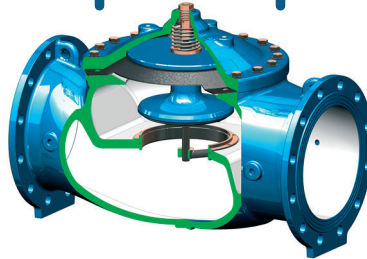
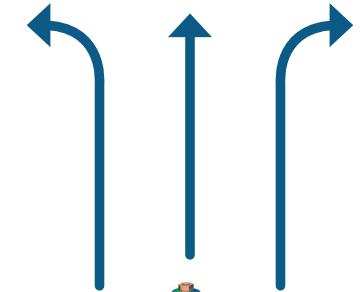
**M3200**  
PRESSURE SUSTAINING / RELIEF VALVE



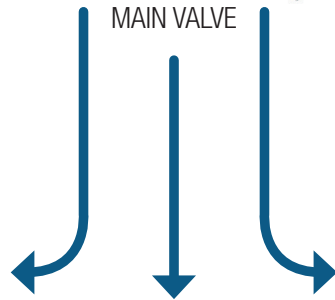
**M3100**  
PRESSURE REDUCING VALVE



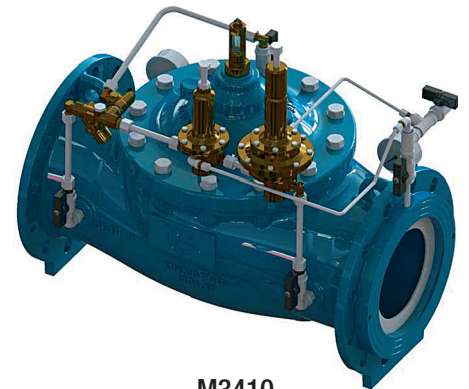
**M3400**  
FLOW CONTROL VALVE



MAIN VALVE



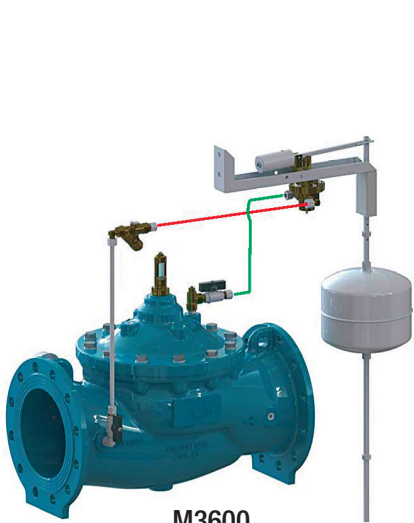
**M3219**  
SURGE ANTICIPATOR / PRESSURE RELIEF VALVE



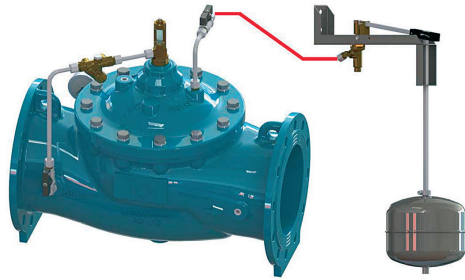
**M3410**  
FLOW CONTROL / PRESSURE REDUCING VALVE



**M3120**  
PRESSURE REDUCING / SUSTAINING



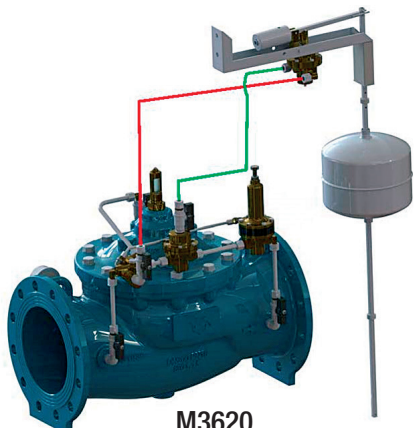
**M3600**  
ON-OFF FLOAT CONTROLLED VALVE



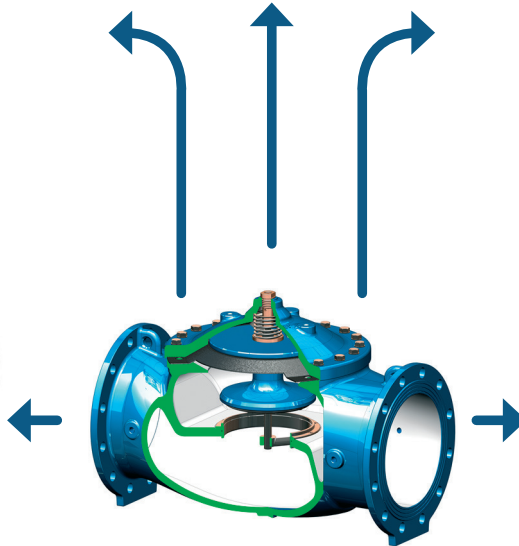
**M3500**  
MODULATING FLOAT CONTROLLED  
CONSTANT LEVEL VALVE



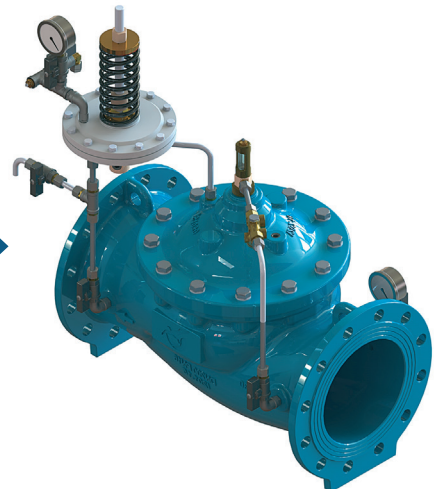
**M3800**  
ALTITUDE VALVE ONE-WAY FLOW



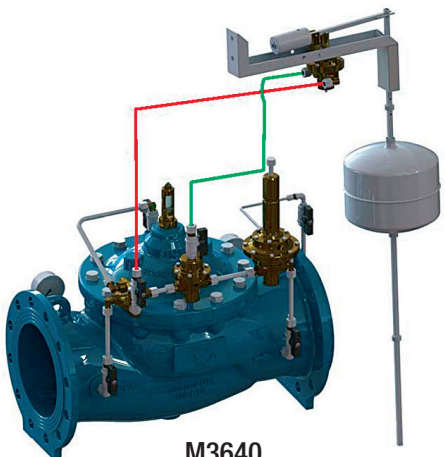
**M3620**  
ON-OFF FLOAT CONTROLLED VALVE  
WITH PRESSURE SUSTAINING



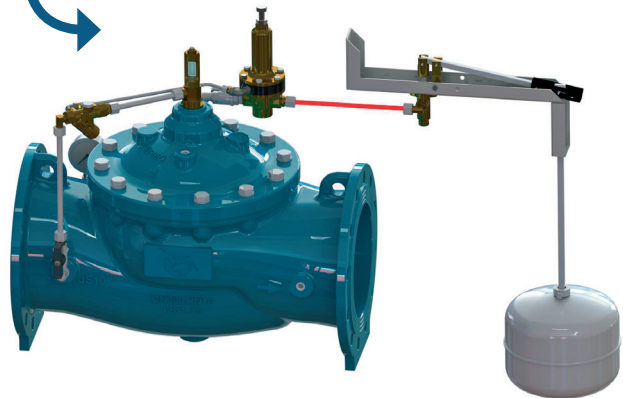
MAIN VALVE



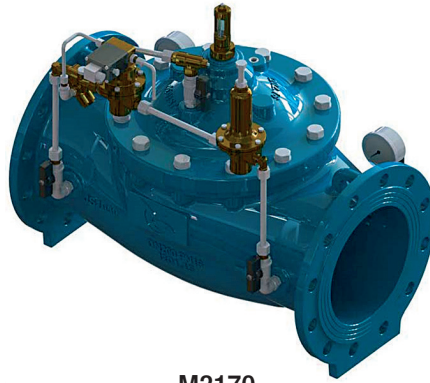
**M3805**  
MODULATING ALTITUDE VALVE



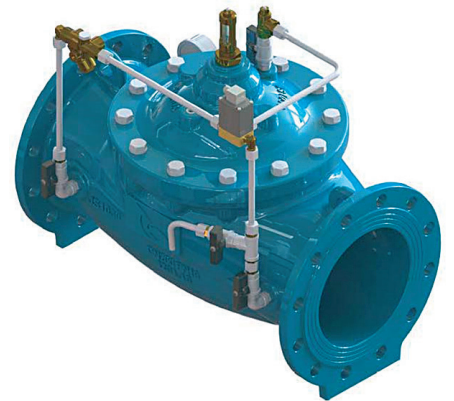
**M3640**  
ON-OFF FLOAT CONTROLLED VALVE  
WITH RATE OF FLOW CONTROL FUNCTION



**M3520**  
MODULATING FLOAT CONTROLLED  
CONSTANT LEVEL VALVE  
WITH PRESSURE SUSTAINING



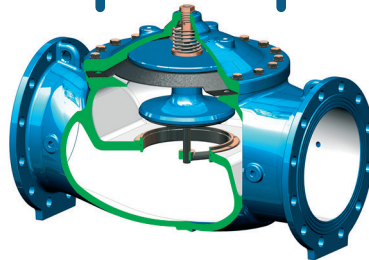
**M3170**  
PRESSURE REDUCING VALVE WITH  
SOLENOID CONTROL



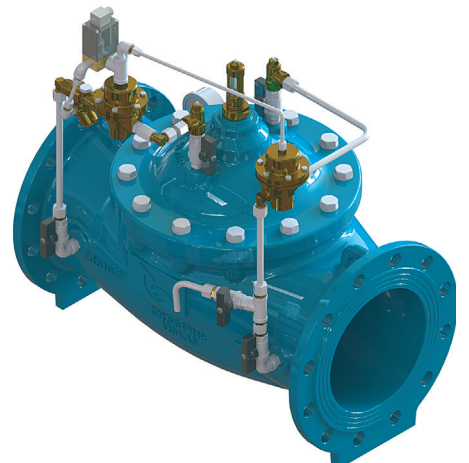
**M3701** [DN50 to DN250]  
SOLENOID CONTROLLED  
ON-OFF VALVE



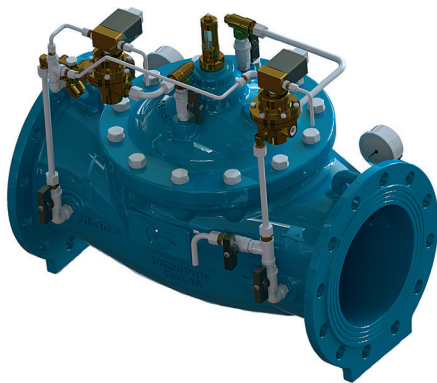
**M3771** [DN50 to DN250]  
SOLENOID CONTROLLED / ELECTRICALLY  
OPERATED "STEP BY STEP"



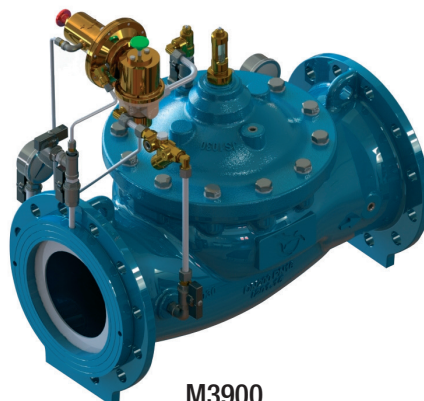
MAIN VALVE



**M3700** [DN300 to DN1000]  
SOLENOID CONTROLLED  
ON-OFF VALVE



**M3770** [DN300 to DN1000]  
SOLENOID CONTROLLED / ELECTRICALLY  
OPERATED "STEP BY STEP"



**M3900**  
EXCESS FLOW VALVE