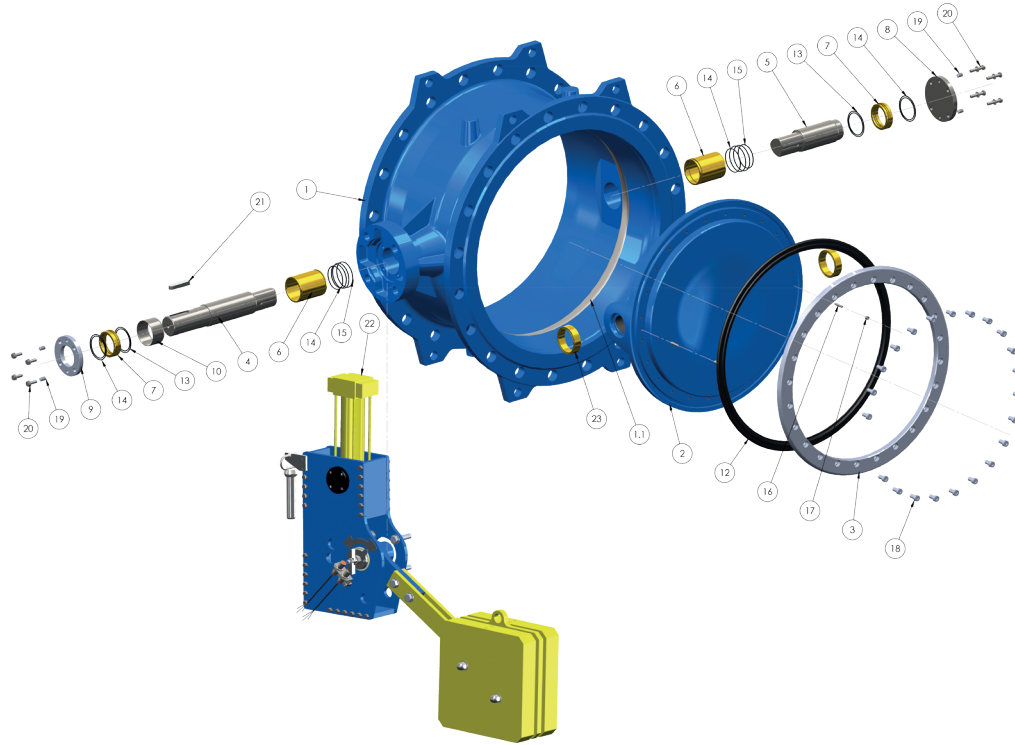


DOUBLE FLANGED DOUBLE ECCENTRIC BUTTERFLY VALVE WITH COUNTERWEIGHT AND HYDRAULIC CYLINDER FOR RESET



ITEM	COMPONENT	MATERIAL	NOTE
1	Body	Ductile iron EN GJS 400-15	Epoxy coating 250 µm
1.1	Body seat ring	Stainless steel	Welded and microfinished
2	Disc	Ductile iron EN GJS 400-15	Epoxy coating 250 µm
3	Retaining seal ring	Stainless steel EN 1.4301 (AISI 304)	
4	Driven shaft	Stainless steel EN 1.4021 (AISI 420)	
5	Shaft (free end)	Stainless steel EN 1.4021 (AISI 420)	
6	Bearing bush	Aluminum bronze	PTFE low friction lining.
7	Sealing bush	Aluminum bronze	
8	Cover	Stainless steel EN 1.4301 (AISI 304)	
9	Sealing bush flange	Stainless steel EN 1.4301 (AISI 304)	
10	Spacer	Stainless steel EN 1.4301 (AISI 304)	
12	Disc sealing ring	EPDM rubber	
13	O-ring	EPDM rubber	
14	O-ring	EPDM rubber	
15	O-ring	EPDM rubber	
16	Anti-blow out for shaft	Stainless steel	
17	Grub screw	Stainless steel A2-70	
18	Retaining ring screw	Stainless steel A2-70	
19	Grub screw	Stainless steel A2-70	
20	Screw and washer	Stainless steel A2-70	
21	Parallel key	Steel	
22	Actuator	According to data sheet	
23	Distant bush	Aluminum bronze	