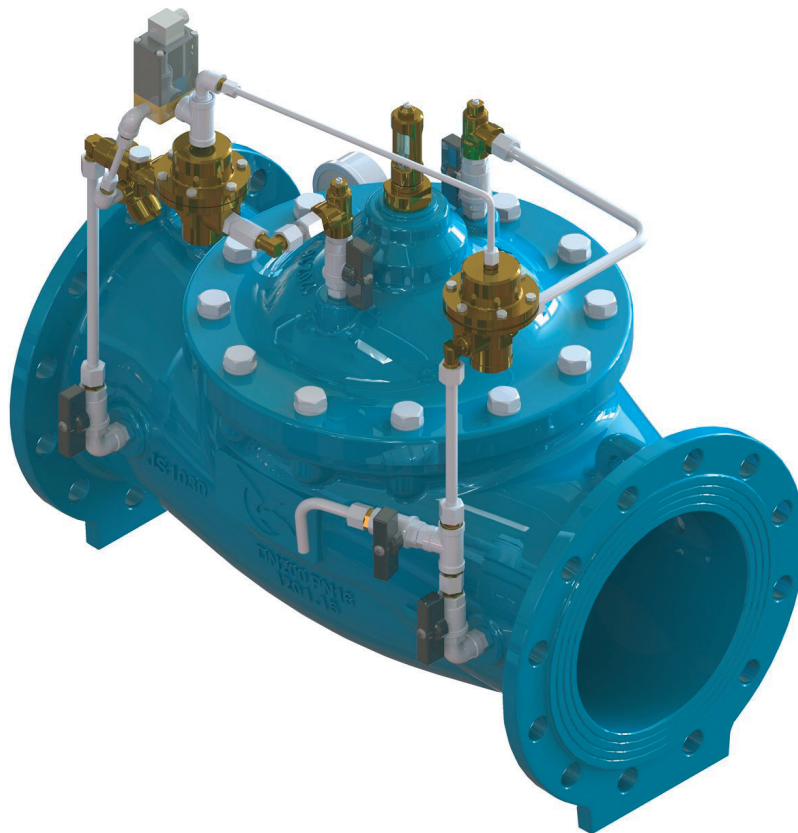


## M3700 • HYDRAULIC ON-OFF VALVE WITH ELECTRICAL REMOTE CONTROL (FROM DN300 TO DN 1200)



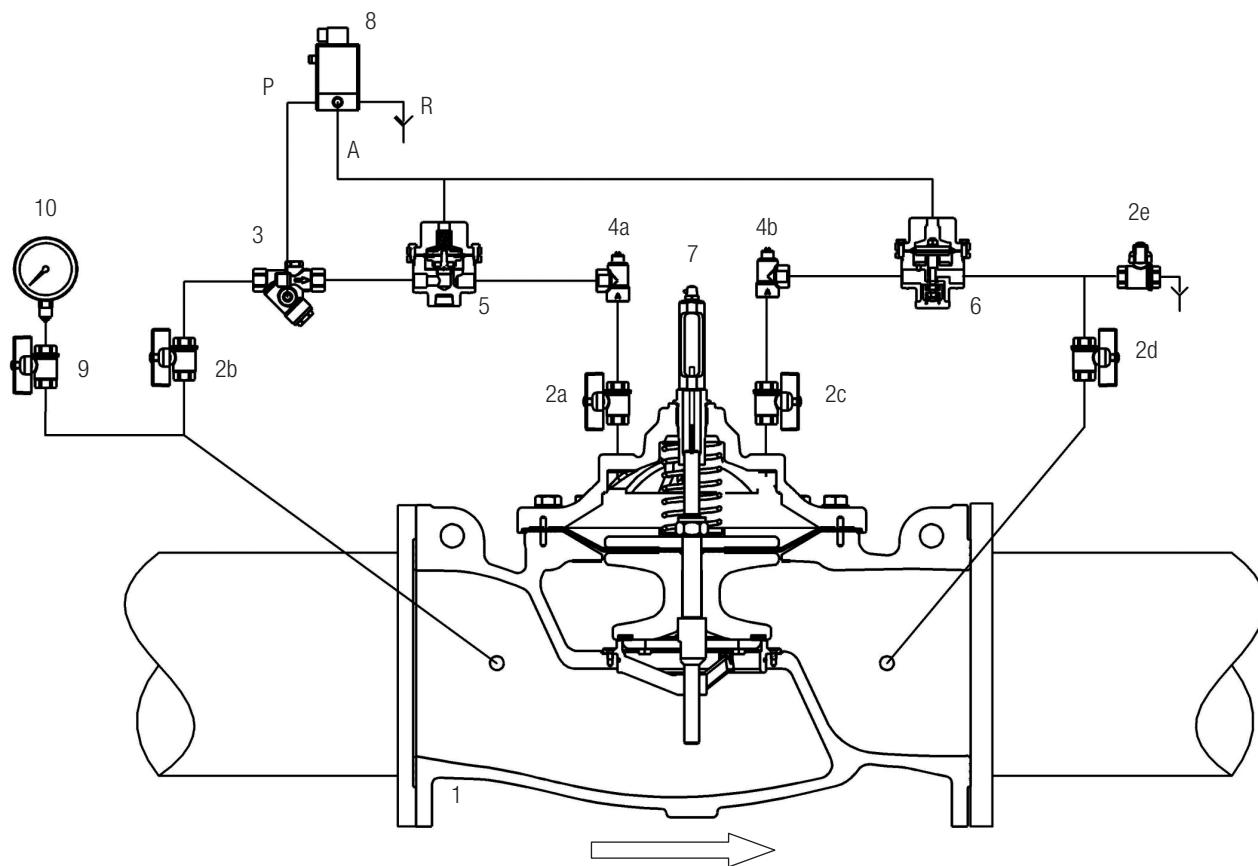
### OPERATING PRINCIPLE

The valve is controlled by a three-way solenoid valve, which acts on two auxiliary valves (one normally close, and one normally open). According to the required application, the main valve can be normally closed (it opens supplying the solenoid valve) or it can be normally open (it close supplying the solenoid valve).

### ADDITIONAL FUNCTIONS

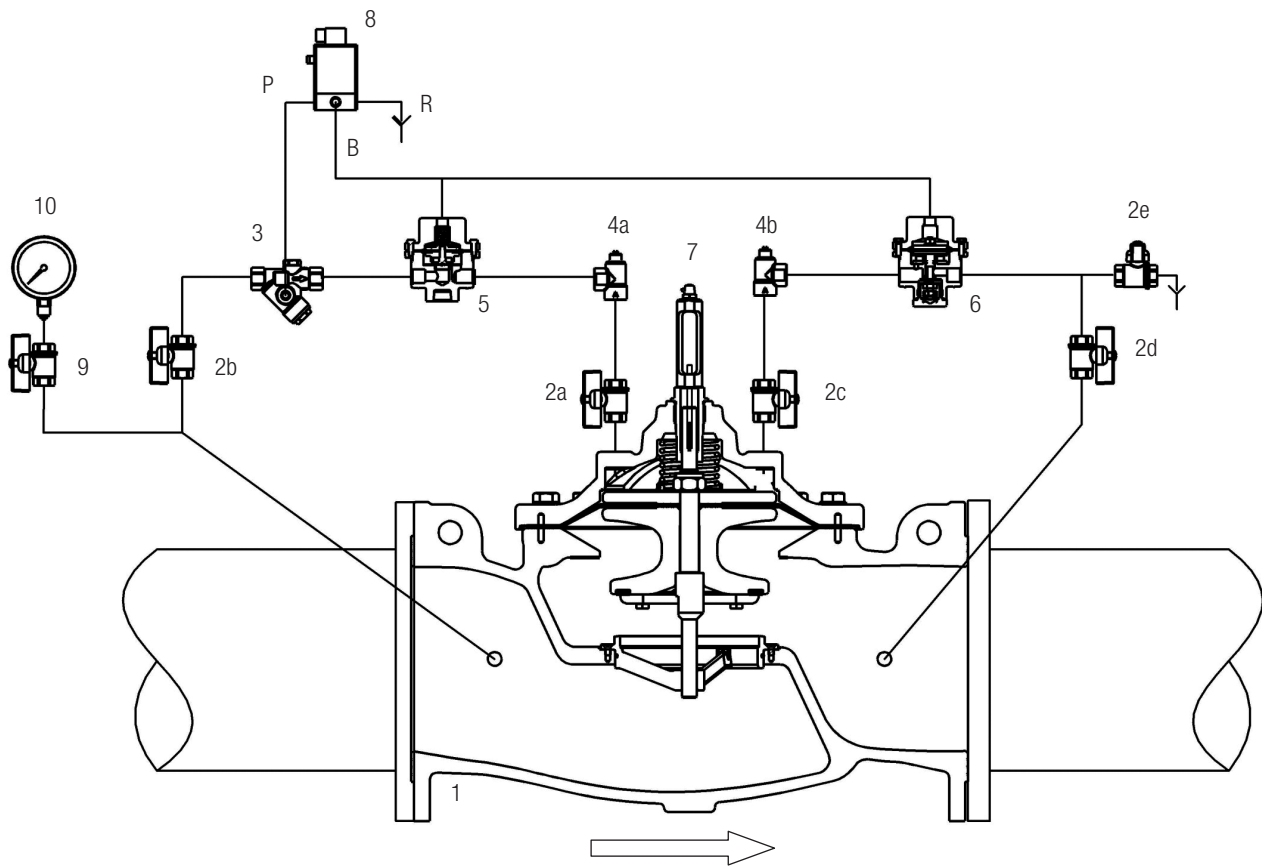
- bi-directional (shut off in the two possible flow directions);
- non-return;
- overpressure relief (only if the valve has been remotely closed);
- anti water-hammer closure.

CIRCUIT AND MATERIALS



MAIN VALVE NORMALLY CLOSED (N.C.)

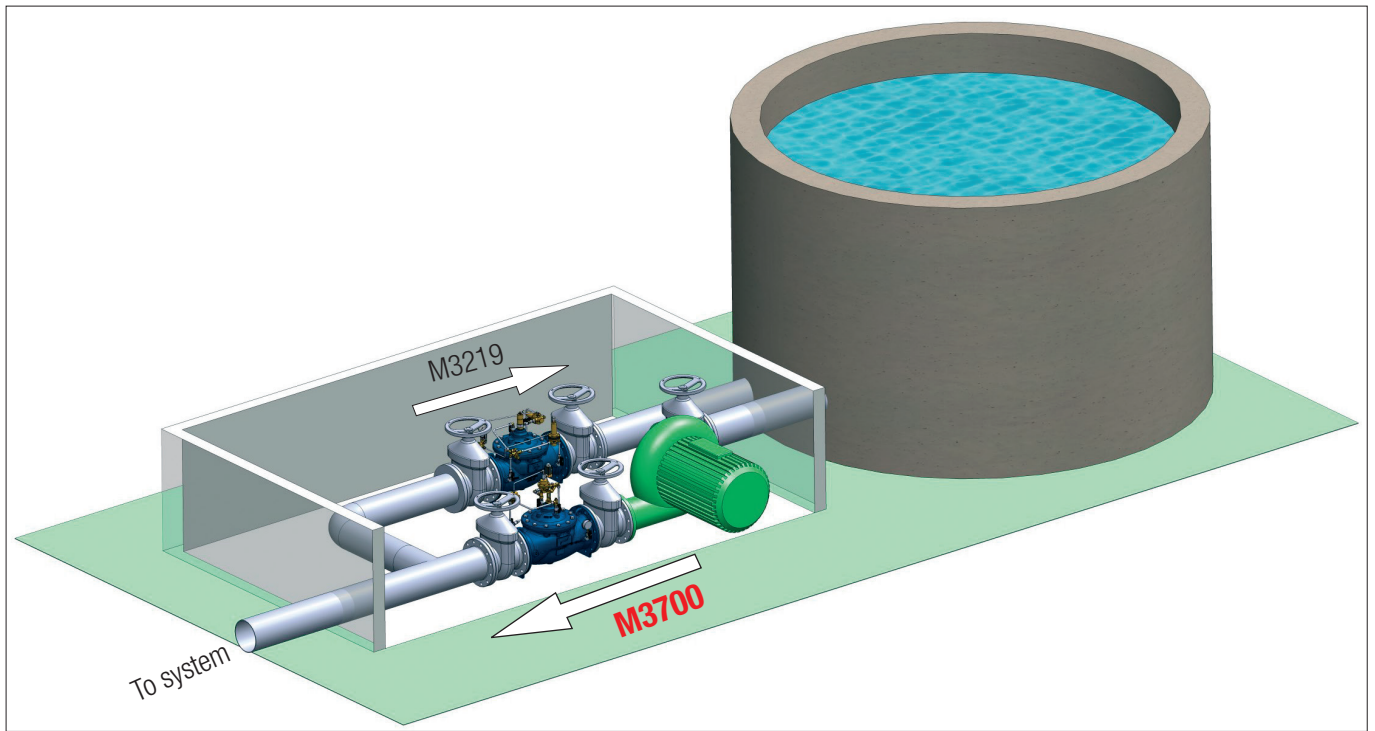
ITEM	DESCRIPTION	MATERIALS (STANDARD)	MATERIAL (HQY - HQ)
1	Main Valve	GJS400-15 EN1563	GJS400-15 EN1563
2 (a,b,c,d,e)	Isolating ball valve	Ni-plated Brass	HQY: Ni-plated Brass HQ: 1.4401 EN10088-3
3	Y - strainer with calibrated orifice	1.4401 EN10088-3 + Brass	1.4401 EN10088-3
4 (a,b)	Bidirectional needle valve	1.4401 EN10088-3 + Brass	1.4401 EN10088-3
5	Auxiliary two way N.O. valve	1.4301 EN10088-3 + Brass (VA200)	1.4301 EN10088-3 (VA260)
6	Auxiliary two way N.C. valve	1.4301 EN10088-3 + Brass (VC200)	1.4301 EN10088-3 (VC260)
7	Position indicator with manual venting device	Brass + Hardened glass	1.4401 EN10088-3 + Hardened glass
8	3-way solenoid valve	Brass	Brass
9	Gauge holder with drainage	Ni-plated Brass	HQY: Ni-plated Brass HQ: 1.4401 EN10088-3
10	Pressure gauge	1.4301 EN10088-3 + Glycerine	1.4301 EN10088-3 + Glycerine
--	Pipe	1.4401 EN10088-3	1.4401 EN10088-3
--	Fittings	1.4401 EN10088-3	1.4401 EN10088-3
--	Compression fittings	1.4401 EN10088-3 + Brass	1.4401 EN10088-3



MAIN VALVE NORMALLY OPEN (N.O.)

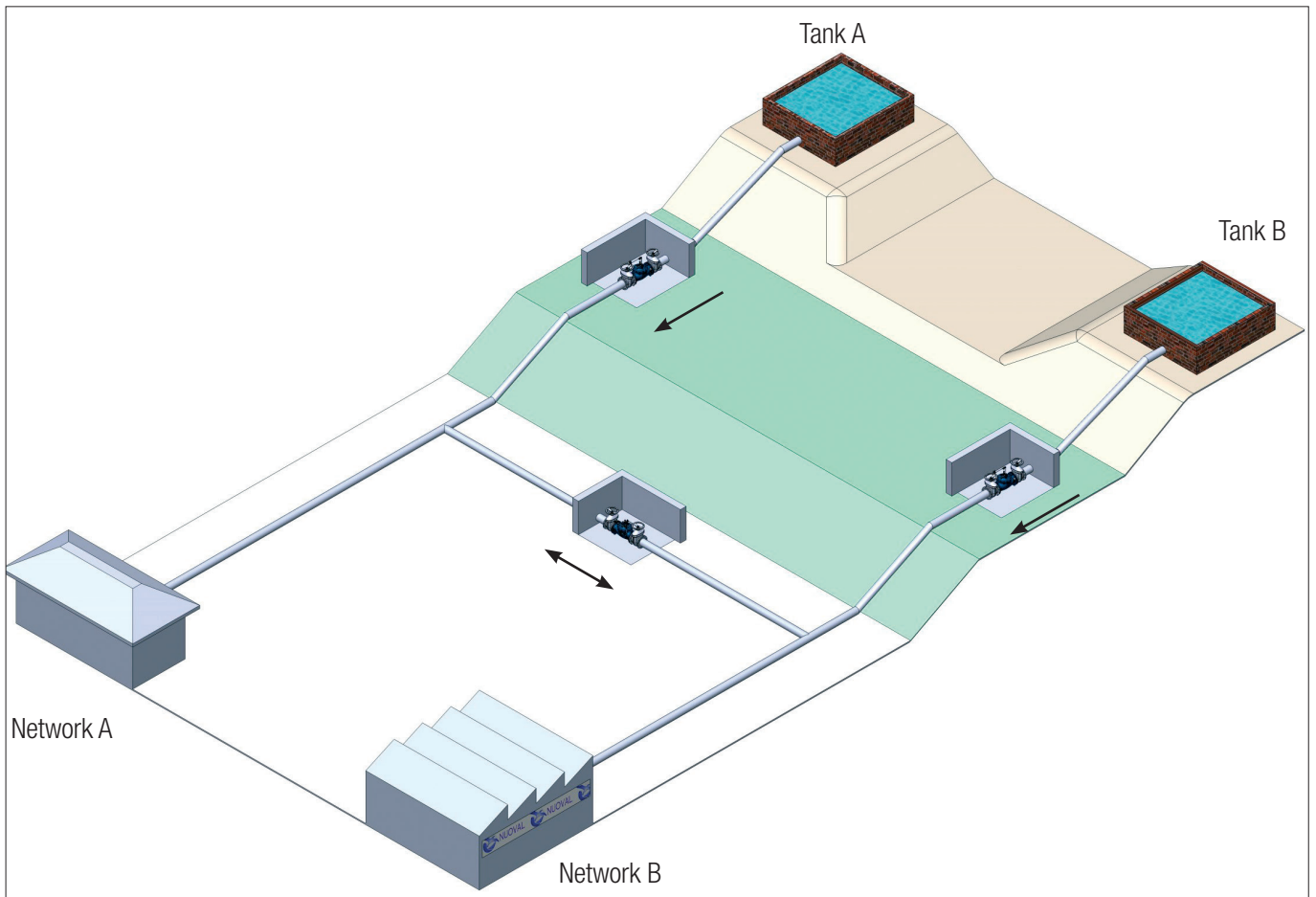
ITEM	DESCRIPTION	MATERIALS (STANDARD)	MATERIAL (HQY - HQ)
1	Main Valve	GJS400-15 EN1563	GJS400-15 EN1563
2 (a,b,c,d,e)	Isolating ball valve	Ni-plated Brass	HQY: Ni-plated Brass HQ: 1.4401 EN10088-3
3	Y - strainer with calibrated orifice	1.4401 EN10088-3 + Brass	1.4401 EN10088-3
4 (a,b)	Bidirectional needle valve	1.4401 EN10088-3 + Brass	1.4401 EN10088-3
5	Auxiliary two way N.O. valve	1.4301 EN10088-3 + Brass (VA200)	1.4301 EN10088-3 (VA260)
6	Auxiliary two way N.C. valve	1.4301 EN10088-3 + Brass (VC200)	1.4301 EN10088-3 (VC260)
7	Position indicator with manual venting device	Brass + Hardened glass	1.4401 EN10088-3 + Hardened glass
8	3-way solenoid valve	Brass	Brass
9	Gauge holder with drainage	Ni-plated Brass	HQY: Ni-plated Brass HQ: 1.4401 EN10088-3
10	Pressure gauge	1.4301 EN10088-3 + Glycerine	1.4301 EN10088-3 + Glycerine
--	Pipe	1.4401 EN10088-3	1.4401 EN10088-3
--	Fittings	1.4401 EN10088-3	1.4401 EN10088-3
--	Compression fittings	1.4401 EN10088-3 + Brass	1.4401 EN10088-3

### TYPICAL INSTALLATION

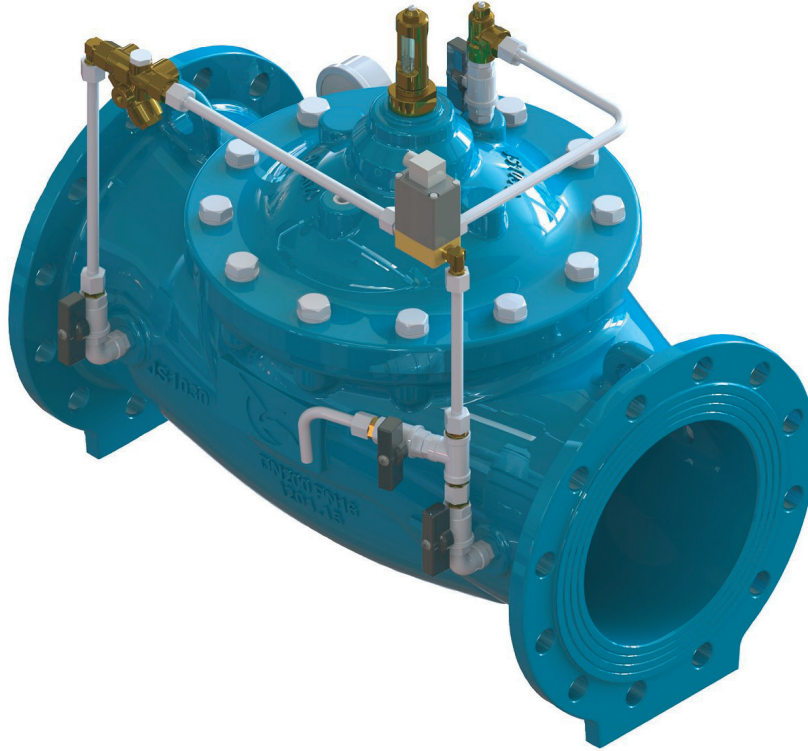


NUOVAL LINE

### TYPICAL APPLICATION



## M3701 • HYDRAULIC ON/OFF VALVE WITH ELECTRICAL REMOTE CONTROL (FROM DN50 TO DN250)



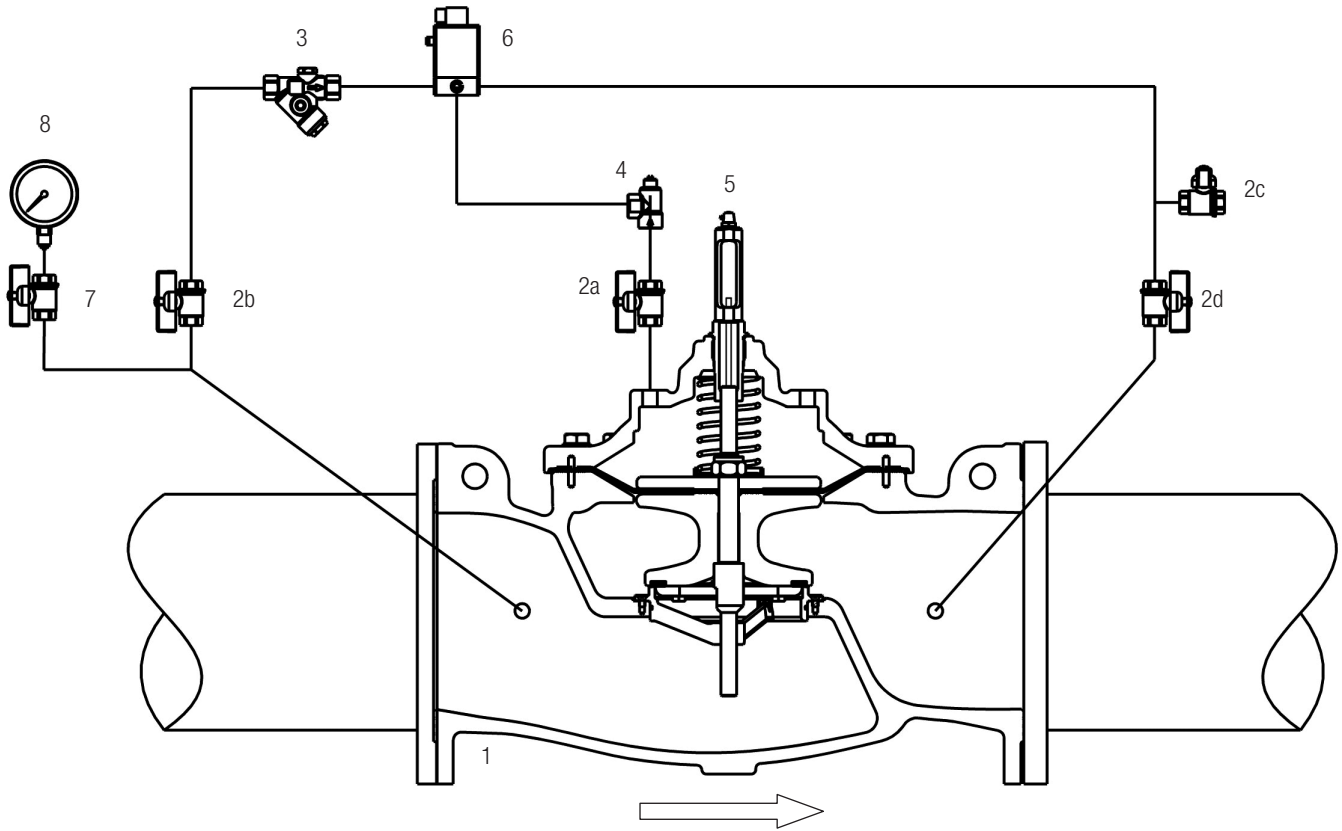
### OPERATING PRINCIPLE

The valve is controlled by a three-way solenoid valve, which acts directly into the cover chamber of the main valve. According to the required application, the main valve can be normally closed (it opens supplying the solenoid valve) or it can be normally open (it close supplying the solenoid valve).

### ADDITIONAL FUNCTIONS

- bi-directional (shut off in the two possible flow directions);
- non-return;
- overpressure relief (only if the valve has been remotely closed);
- anti water-hammer closure.

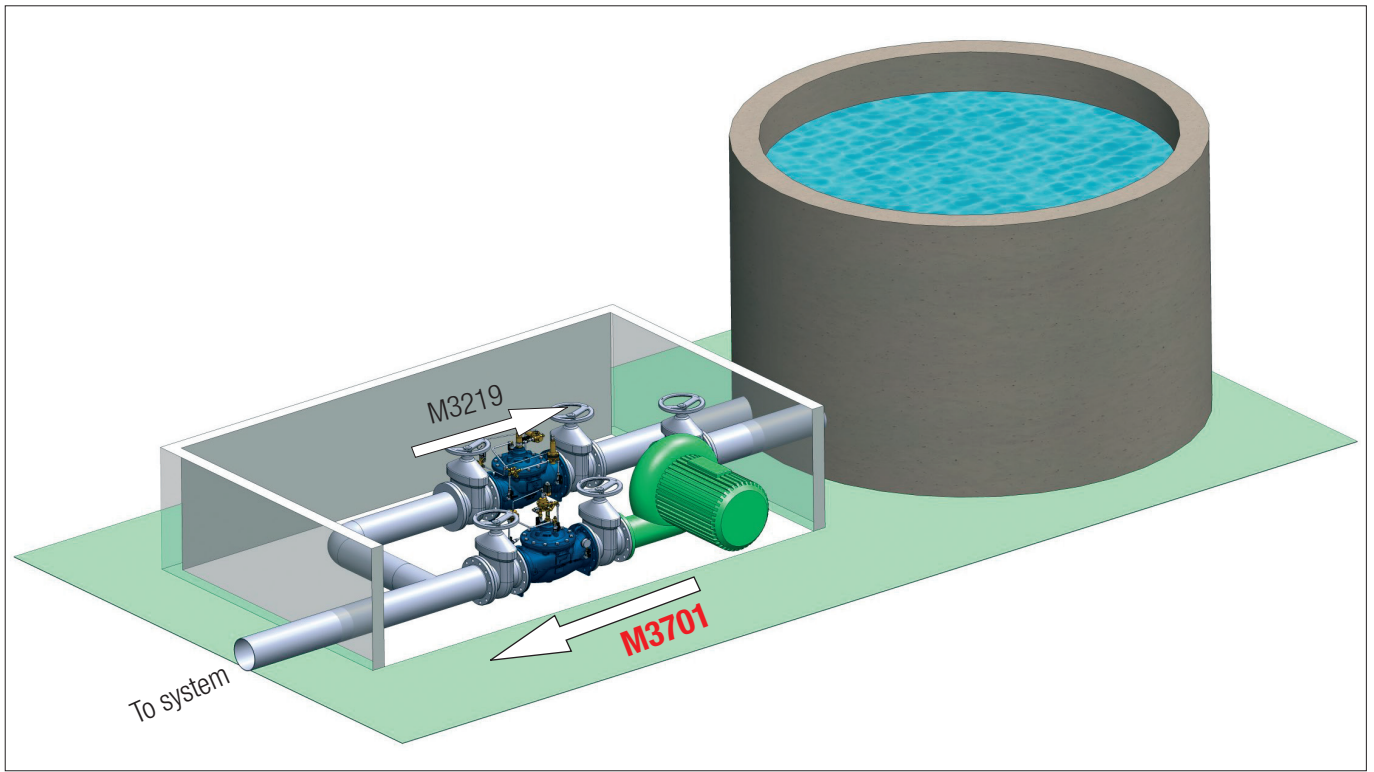
CIRCUIT AND MATERIALS



NUOVAL LINE

ITEM	DESCRIPTION	MATERIALS (STANDARD)	MATERIAL (HQ / HQY)
1	Main valve	GJS400-15 EN1563	GJS400-15 EN1563
2 (a,b,c,d)	Isolating ball valve	Ni-plated Brass	HQY = Nickel plated brass HQ = 1.4401 EN10088-3
3	Y - strainer with calibrated orifice	1.4401 EN10088-3 + Brass	1.4401 EN10088-3
4	Bidirectional needle valve	1.4401 EN10088-3 + Brass	1.4401 EN10088-3
5	Position indicator with manual venting device	Brass + Hardened glass	1.4401 EN10088-3 + Hardened glass
6	Three-way solenoid valve	Brass	Brass
7	Gauge holder with drain	Ni-plated Brass	HQY = Nickel plated HQ = 1.4401 EN10088-3
8	Pressure gauge	1.4301 EN10088-3 + Glycerine	1.4301 EN10088-3 + Glycerine
--	Pipe	1.4401 EN10088-3	1.4401 EN10088-3
--	Fittings	1.4401 EN10088-3	1.4401 EN10088-3
--	Compression fittings	1.4401 EN10088-3 + Brass	1.4401 EN10088-3

TYPICAL INSTALLATION



TYPICAL APPLICATION

