

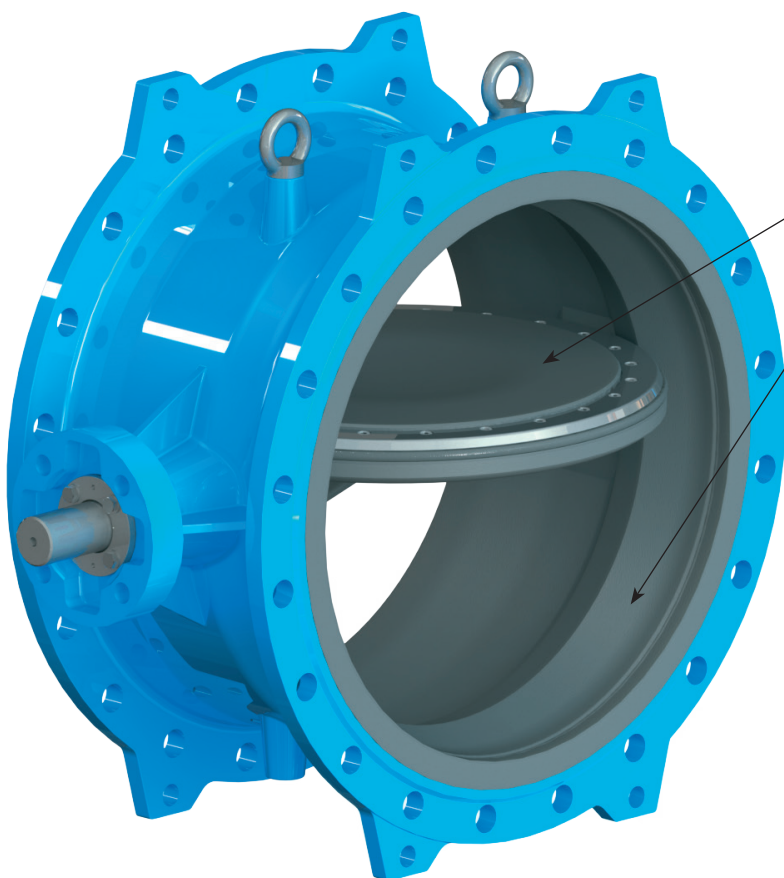
D14 RL • DOUBLE FLANGED DOUBLE ECCENTRIC BUTTERFLY VALVE WITH VULCANIZED HARD RUBBER LINING

TIS double flanged double eccentric butterfly valve with vulcanized hard rubber lining for saline media (seawater or well-desalination) or corrosive media is designed to withstand the chemical attack of chloride ions.

Due to the fluid aggressivity, standard epoxy coated valve surfaces will be rapidly abraded or corroded. The best possible solution, in order to guarantee valves longevity and safe operation of the plants, is to protect the inner surface of the valve with 3 mm of hard rubber lining: in this way, the disc and the internal surface of the body are protected from the aggressive fluids.

Other parts of the valve in contact with water (shaft and retaining seal ring) are made of duplex stainless steel, with high resistance to corrosion.

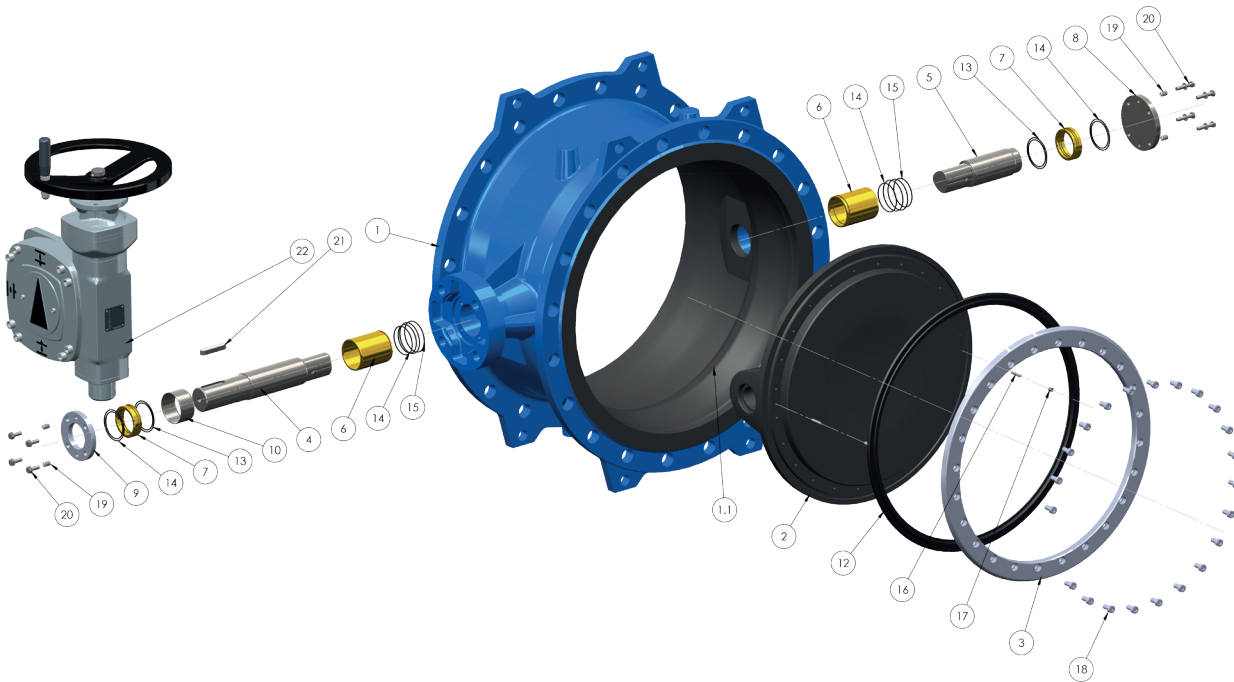
Typical applications of double flanged double eccentric butterfly valves with vulcanized hard rubber lining are: water treatment plants, desalination plants, mines, industrial water and treatment plants in minerals.



Body and disc surface, in contact with the fluid, is completely lined with a rubber layer which allows additional protection to the corrosion due to brackish waters and significantly increases lifespan of the valve.

COMPONENTS AND MATERIALS

NUOVAL LINE



ITEM	COMPONENT	MATERIAL	NOTE
1	Body	Ductile iron EN GJS 400-15	Internal coating made by vulcanized hard rubber, external coating epoxy powder 300 µm
2	Disc	Ductile iron EN GJS 400-15	Coating made by vulcanized hard rubber
3	Retaining seal ring	Stainless steel EN 1.4571 (AISI 316Ti)	
4	Driven shaft	Stainless steel EN 1.4462 (DUPLEX)	
5	Shaft (free end)	Stainless steel EN 1.4462 (DUPLEX)	
6	Bearing bushing	Aluminum bronze*	
7	Sealing bushing	Aluminum bronze	
8	Cover	Stainless steel EN 1.4301 (AISI 304)	
9	Sealing bush flange	Stainless steel EN 1.4301 (AISI 304)	
10	Spacer	Stainless steel EN 1.4301 (AISI 304)	
12	Disc sealing ring	EPDM rubber	
13	O-ring	EPDM rubber	
14	O-ring	EPDM rubber	
15	O-ring	EPDM rubber	
16	Anti-blow out for shaft	Stainless steel	
17	Grub screw	Stainless steel A4-70	
18	Retaining ring screw	Stainless steel A4-70	
19	Grub screw	Stainless steel A4-70	
20	Screw and washer	Stainless steel A4-70	
21	Parallel key	Steel	
22	Gearbox	According to data sheet	

* PN25 - PN40, from DN600 and above, with additional PTFE low friction lining.