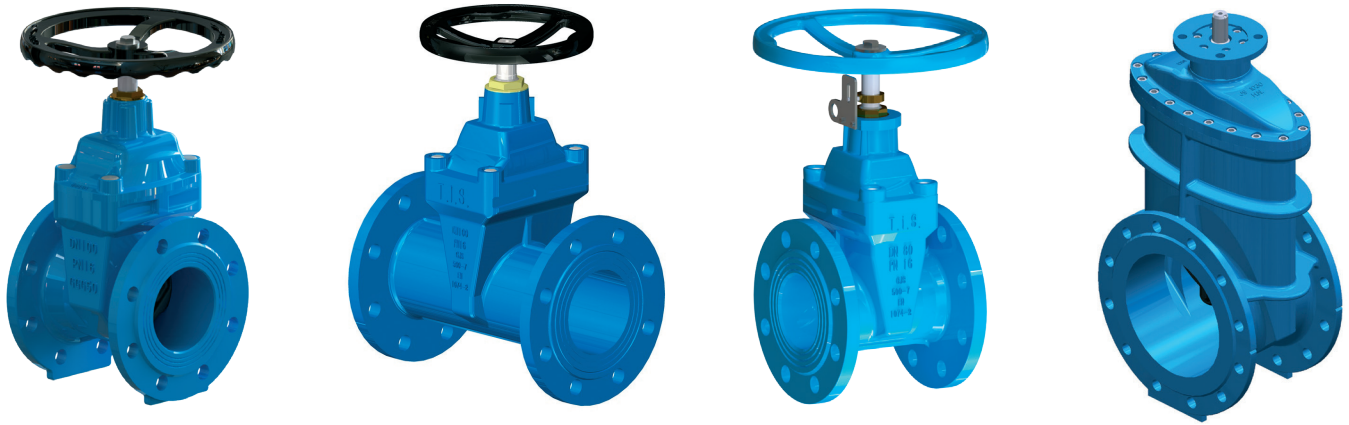


RESILIENT SEATED GATE VALVE



T.I.S. resilient seated gate valve is a bidirectional on/off full port valve, made of ductile iron and designed for the supply and distribution of drinking water and also used in sewage water treatment plants.

The wedge is fully rubber lined with high quality EPDM material, which ensures a perfect hydraulic sealing of the valve: thanks to the elastic features of the rubber, the obturator can recover its original shape also after long periods of compression when the valve is closed. During opening and closing operations the sliding friction of the wedge on the valve body is reduced by its slippery guides: in this way the operating torque is lowered, and the valve life is extended.

Resilient seated gate valve is generally equipped with an operating handwheel, but versions with square cap, with stem extension, with position indicator, with manual gearbox or with electric actuator are available upon request.

The valve is suitable for drinking water application: the fusion bonded epoxy process (FBE), with certified resin powders used for internal and external surfaces, guarantees a heavy corrosion protection.

A02 • RESILIENT SEATED GATE VALVE

S14 (SHORT BODY) - S15 (LONG BODY) • PN10 - PN16

DESIGN FEATURES

- According to EN 1171, EN 1074-1 and EN 1074-2;
- Face to face dimension according to EN 558 series 14 (F4), series 15 (F5) and series 3 (BS);
- Body, bonnet and wedge made of ductile iron EN GJS 500-7 according to EN 1563;
- Wedge coating made of vulcanized EPDM rubber according to EN 681-1 WA;
- Gasket and o-rings made of EPDM rubber according to EN 681-1 WA;
- Flange dimensions according to EN 1092-2;
- Body and bonnet connection made of 8.8 grade galvanized steel screws fully protected against corrosion;
- Shaft made of stainless steel EN 1.4021 (AISI 420);
- All materials, including lubricants, in contact with water approved for human consumption according to EN 1074-1 and EN 1074-2;
- Internal and external surface protection made of epoxy resin powder (FBE), blue colour RAL 5015 and thickness of 250µm;
- Hydraulic test according to EN 12266-1;
- Tight in both directions, rate A according to EN 12266-1 (zero drops);
- Working temperature Min. -10°C (excluded frost) Max. + 70°C.

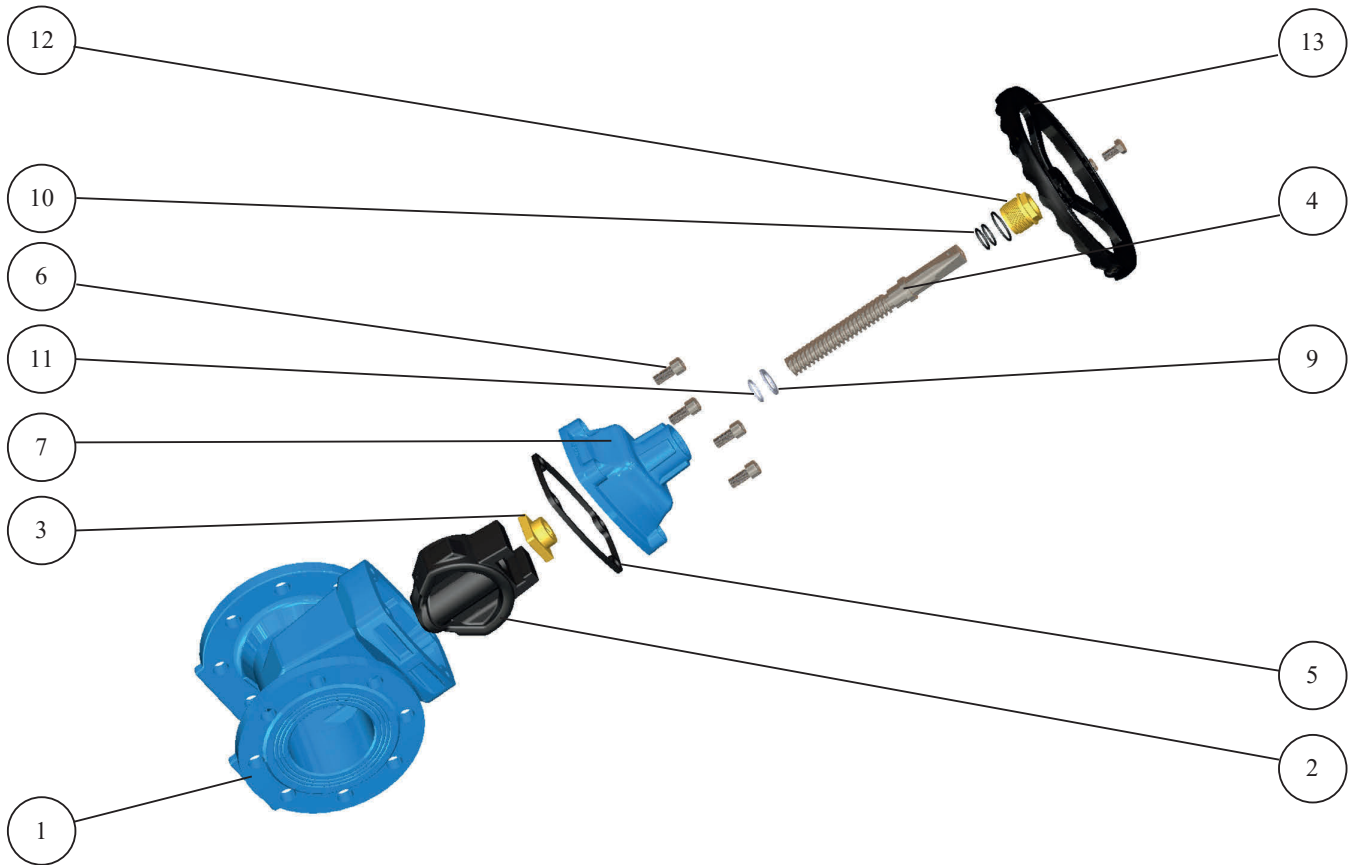
HIGH CORROSION-RESISTANT MATERIALS

Upon request, some parts can be produced with high corrosion-resistant materials, such as:

- Shaft made of stainless steel 1.4301 EN 10088-3 (AISI 304) or 1.4401 EN 10088-3 (AISI 316);
- Screws made of stainless steel A2-70 EN ISO 3506-1 or A4-70 EN ISO 3506-1

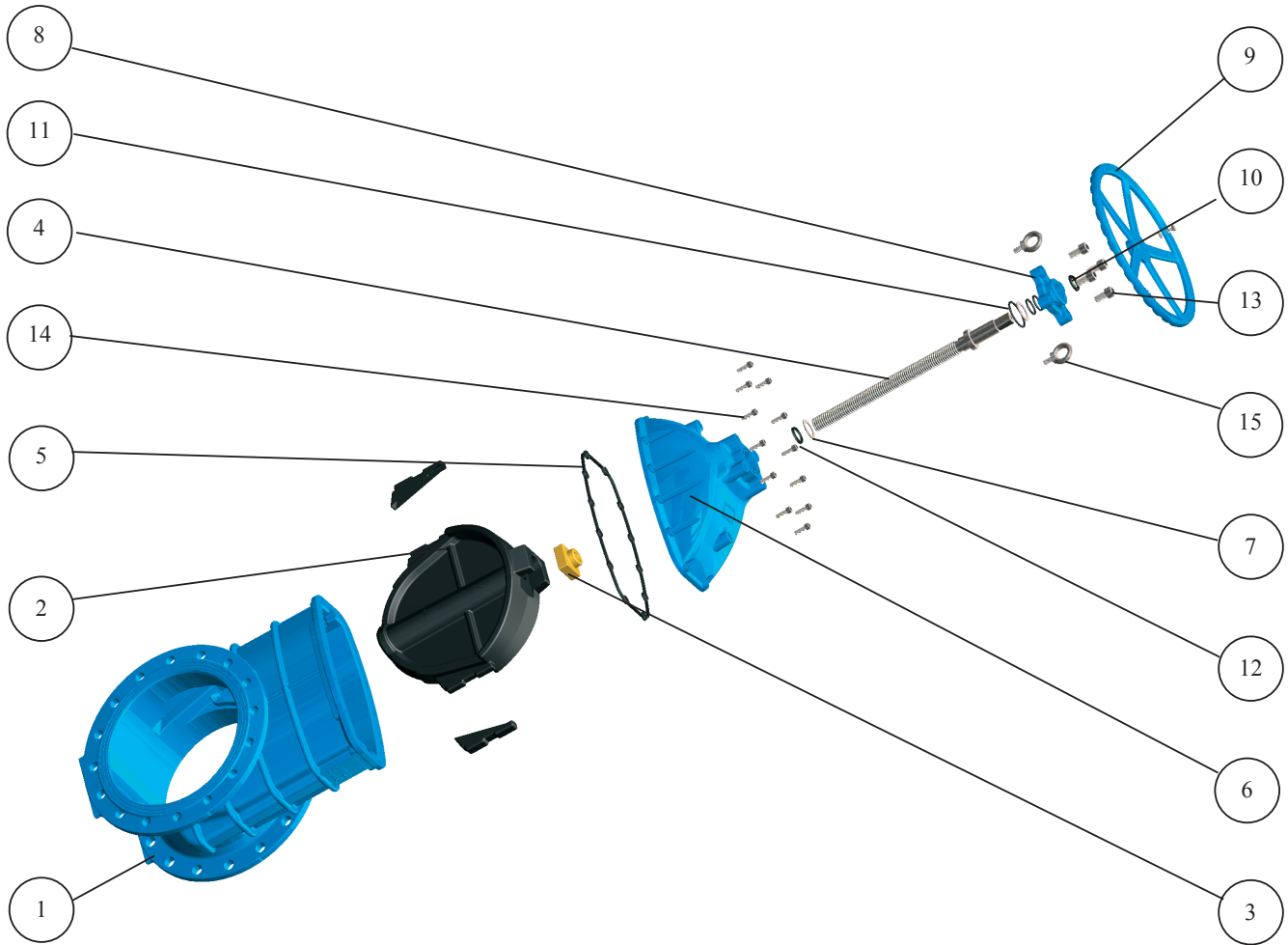


COMPONENTS AND MATERIALS FROM DN40 TO DN300



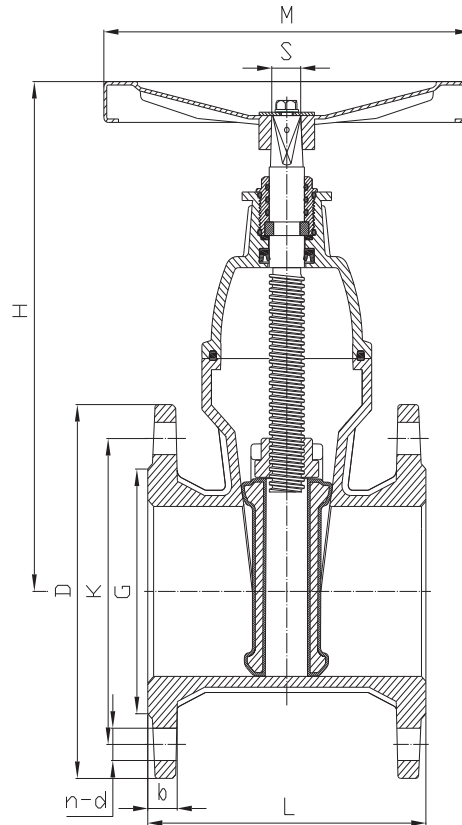
ITEM	COMPONENT	MATERIAL	NOTE
1	Body	Ductile iron EN GJS 500-7	Epoxy coating 250 µm
2	Wedge	Ductile iron EN GJS 500-7 EPDM coated	Low friction guides
3	Stem nut	Aluminum bronze	
4	Shaft	Stainless steel EN 1.4021 (AISI 420)	
5	Main gasket	EPDM rubber	
6	Bolts	8.8 Galvanized steel	
7	Bonnet	Ductile iron EN GJS 500-7	Epoxy coating 250 µm
9	Washer	POM	
10	O-Ring	EPDM rubber	
11	Anti-blowout ring	Aluminum bronze	
12	Packing gland	Aluminum bronze	
13	Hand wheel	Carbon steel	Epoxy coating
-	Eye bolt	Galvanized steel	DN200 and above

COMPONENTS AND MATERIALS FROM DN350 TO DN600 PN10 - PN16



ITEM	COMPONENT	MATERIAL	NOTE
1	Body	Ductile iron EN GJS 500-7	Epoxy coating 250 µm
2	Wedge	Ductile iron EN GJS 500-7 EPDM coated	Low friction guides
3	Stem nut	Aluminum bronze	
4	Shaft	Stainless steel EN 1.4021 (AISI 420)	
5	Main gasket	EPDM rubber	
6	Bonnet	Ductile iron EN GJS 500-7	Epoxy coating 250 µm
7	Washer	Aluminum bronze or inox	
8	Cover	Ductile iron EN GJS 500-7	Epoxy coating 250 µm
9	Hand wheel	Ductile iron EN GJS 500-7	Epoxy coating
10	Dust proof	EPDM rubber	
11	O-ring	EPDM rubber	
12	Lip seal	EPDM rubber	
13	Screw	Galvanized steel 8.8	
14	Screw	Galvanized steel 8.8	
15	Eye bolt	Galvanized steel	

DIMENSIONS AND WEIGHTS FROM DN40 TO DN300 PN10 - PN16

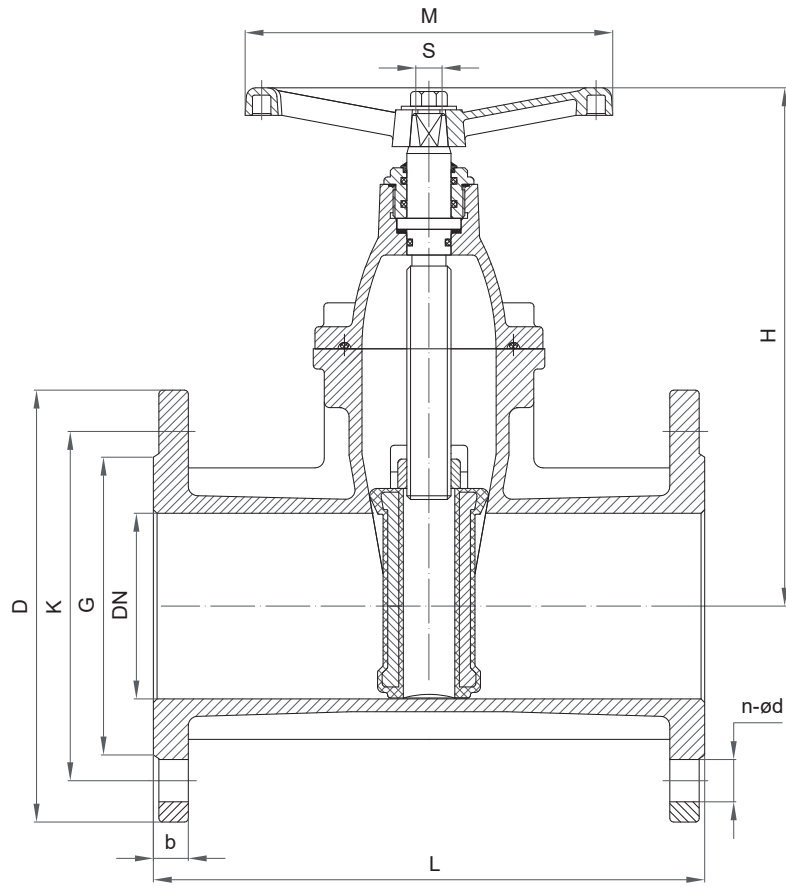


DN	G	K		D		L			H	n-∅d		b	M	S	W (kg)	
		PN10	PN16	PN10	PN16	S14	S15	BS**		PN10	PN16				S14	S15
40	84	110	110	150	150	140	240	165	220	4-19	4-19	19.0	200	14	7.8	8.6
50	99	125	125	165	165	150	250	178	220	4-19	4-19	19.0	200	14	8.7	10.0
65	118	145	145	185	185	170	270	190	255	4-19	4-19	19.0	200	17	12.3	13.5
80	132	160	160	200	200	180	280	203	280	8*19	8-19	19.0	200	17	13.5	15.6
100	156	180	180	220	220	190	300	229	320	8-19	8-19	19.0	250	19	18.7	22.0
125	184	210	210	250	250	200	325	254	355	8-19	8-19	19.0	250	19	21.3	27.0
150	211	240	240	285	285	210	350	267	400	8-23	8-23	19.0	350	19	30.0	34.0
200	266	295	295	340	340	230	400	292	510	8-23	12-23	20.0	350	24	49.0	60.0
250	319	350	355	395	405	250	450	330	600	12-23	12-28	22.0	500	27	75.0	97.0
300	370	400	410	445	460	270	500	356	685	12-23	12-28	24.5	500	27	107	130

* Available also with 4 holes

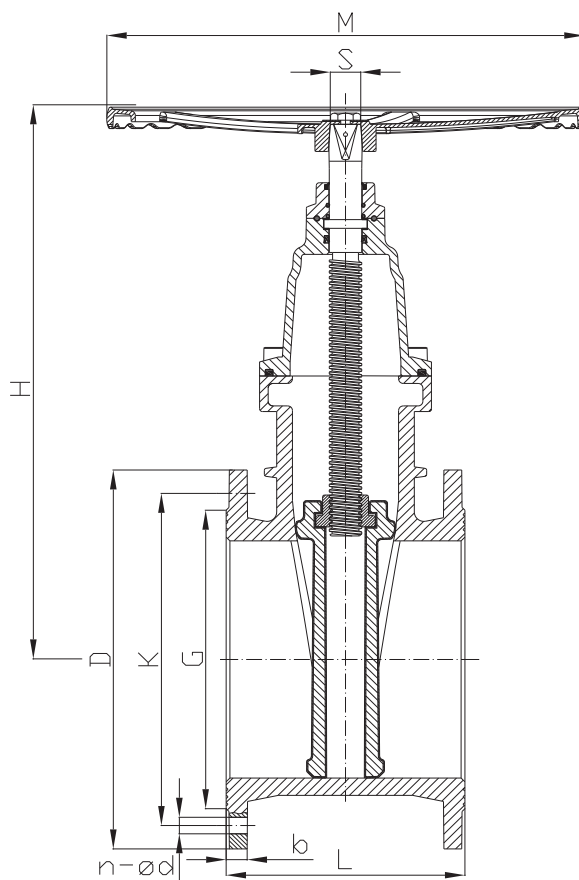
** Available on request.

DIMENSIONS AND WEIGHTS PN25



DN	G	K	D	L	H	n-ød	b	M	S	W (kg)
50	99	125	165	250	190	4-19	19.0	200	14	13.0
65	118	145	185	270	195	8-19	19.0	200	17	16.0
80	132	160	200	280	222	8-19	19.0	200	17	20.0
100	156	190	235	300	251	8-23	19.0	250	19	29.0
125	184	220	270	325	282	8-28	19.0	250	19	40.5
150	211	250	300	350	343	8-28	20.0	350	19	53.0
200	274	310	360	400	382	12-28	22.0	350	24	79.0
250	330	370	425	450	464	12-31	24.5	500	27	121.5
300	389	430	485	500	562	16-31	27.5	500	27	170.0

DIMENSIONS AND WEIGHTS FROM DN350 TO DN1000 PN10 - PN16



DN	G		K		D		L			H	n-ød		b		M	S	(kg) S14		(kg) S15	
	PN10	PN16	PN10	PN16	PN10	PN16	S14	S15	BS**		PN10	PN16	PN10	PN16			PN10	PN16	PN10	PN16
350	429	429	460	470	505	520	290	550	381	810	16-23	16-28	24.5	26.5	500	27	167	171	189	193
400	480	480	515	525	565	580	310	600	406	900	16-28	16-31	24.5	28	640	32	216	221	244	249
450	530	548	565	585	615	640	330	650	432	985	20-28	20-31	25.5	30	800	32	313	322	365	375
500	582	609	620	650	670	715	350	700	457	1065	20-28	20-34	26.5	31.5	800	36	372	391	435	454
600	682	720	725	770	780	840	390	800	508	1265	20-31	20-37	30	36	800	41	625	657	721	753
*700	794	794	840	840	910	910	430	900	610	1390	24-31	24-37	39.5	39.5	460	-	980	980	960	960
*800	901	901	950	950	1025	1025	470	1000	660	1570	24-34	24-41	43.0	43.0	460	-	1280	1280	1320	1320
*900	1001	1001	1050	1050	1125	1125	510	1100	711	1750	28-34	28-41	46.5	46.5	550	-	1650	1650	2000	2000
*1000	1112	1112	1160	1170	1255	1255	550	1200	813	1950	28-37	28-44	50.0	50.0	550	-	2350	2350	3600	3600

* Manual gearbox version.

** Available on request.