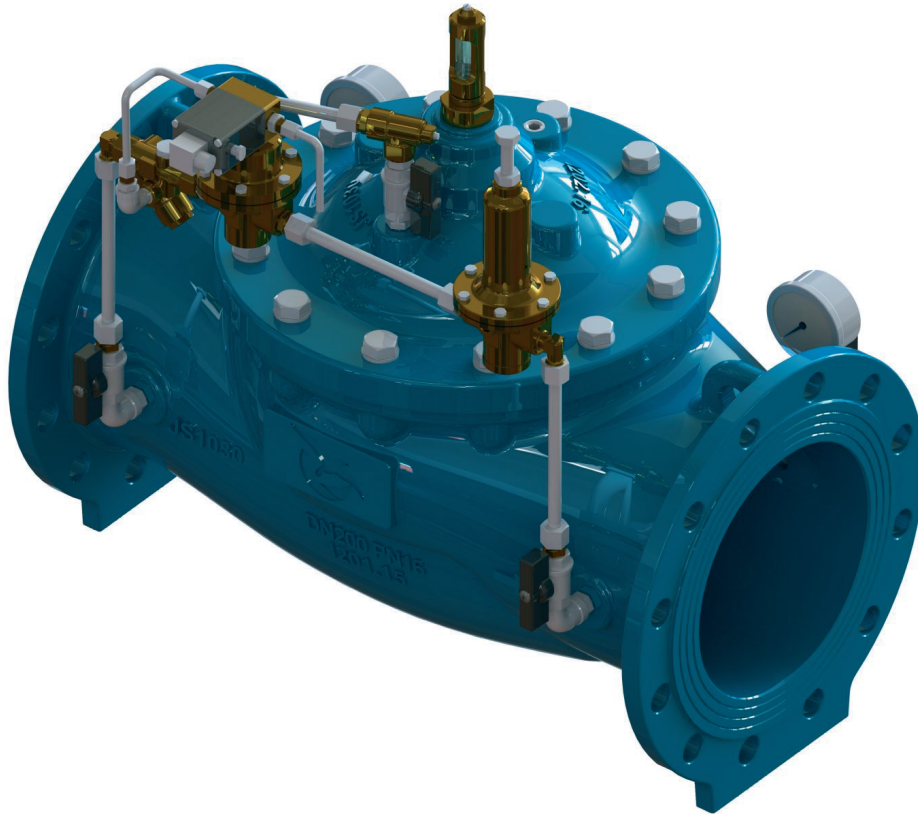


M3170 • PRESSURE REDUCING VALVE WITH ON-OFF SOLENOID CONTROL



OPERATING PRINCIPLE

This valve reduces and stabilizes the downstream pressure at a preset value independently of the flow rate / upstream pressure variations in addition valve has also on-off function made by a remote signal sent to a solenoid valve.

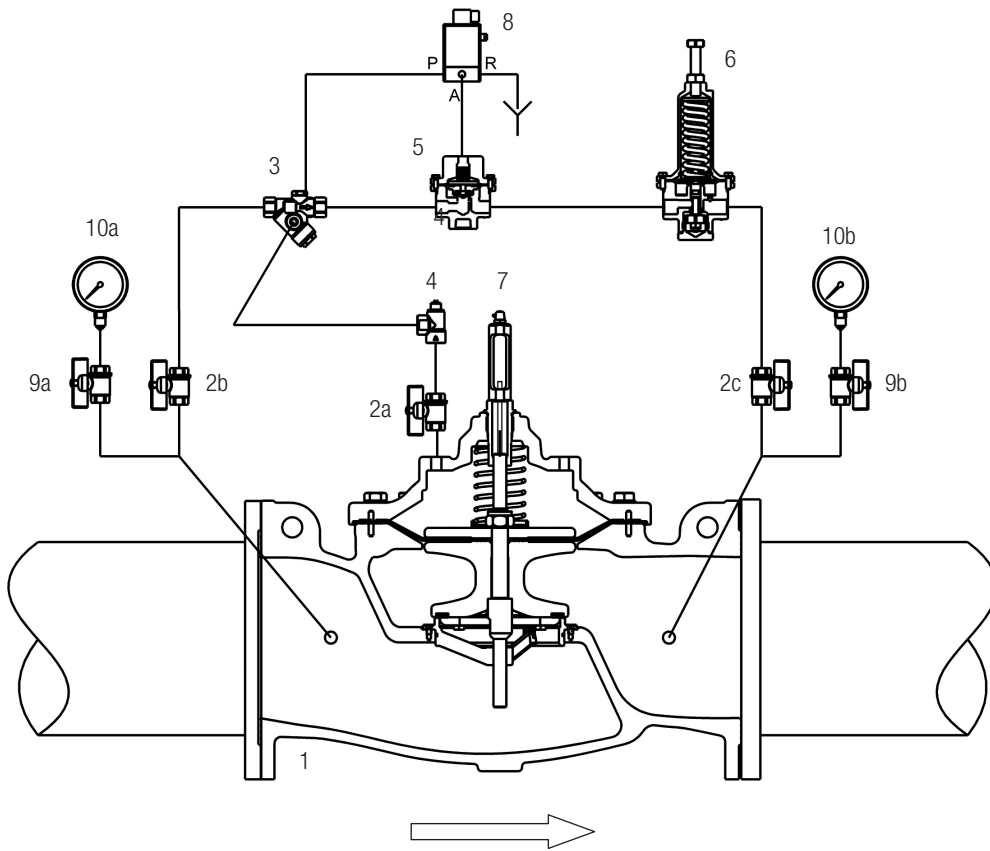
This type of valve is mainly used in water supply and distribution systems.

The purpose of this valve is to ensure an outlet reduced and stabilized pressure, and to be remotely controlled.

ADDITIONAL FUNCTIONS

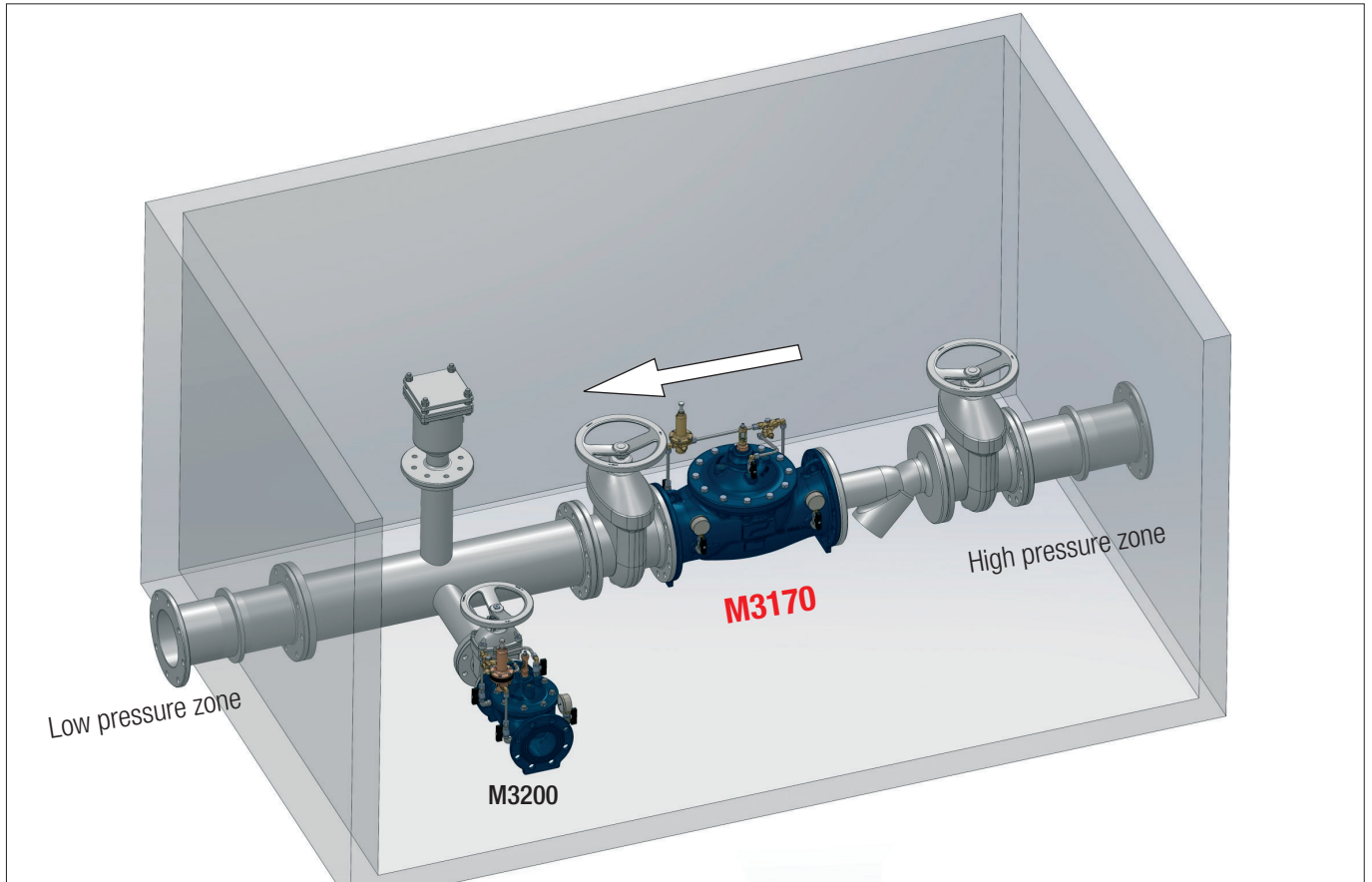
- pressure sustaining;
- non-return;
- reverse opening device;
- opening in case of inlet pressure drop;
- two adjustable reduction values both with electrical remote control and with fully manual hydraulic system;
- flow rate control;
- minimum-maximum level control with float pilot and dissipating orifice fitted downstream of the valve.

CIRCUIT AND MATERIALS



ITEM	DESCRIPTION	MATERIALS (STANDARD)	MATERIAL (HQY - HQ)
1	Main Valve	GJS400-15 EN1563	GJS400-15 EN1563
2 (a,b,c)	Isolating ball valve	Ni-plated Brass	HQY:Ni-plated Brass HQ: 1.4401 EN10088-3
3	Y - strainer with calibrated orifice	1.4401 EN10088-3 + Brass	1.4401 EN10088-3
4	Monodirectional needle valve	1.4401 EN10088-3 + Brass	1.4401 EN10088-3
5	Auxiliary two-way N.O. valve	1.4301 EN10088-3 + Brass (VA200)	1.4301 EN10088-3 (VA260)
6	Pressure reducing pilot	1.4401 EN10088-3 + Brass (CV100)	1.4401 EN10088-3 (CV160)
7	Position indicator with manual venting device	Brass + Hardened glass	1.4401 EN10088-3 + Hardened glass
8	3-way solenoid valve	Brass	Brass
9 (a,b)	Gauge holder with drainage	Ni-plated Brass	HQY:Ni-plated Brass HQ: 1.4401 EN10088-3
10 (a,b)	Pressure gauge	1.4301 EN10088-3 + Glycerine	1.4301 EN10088-3 + Glycerine
--	Pipe	1.4401 EN10088-3	1.4401 EN10088-3
--	Fittings	1.4401 EN10088-3	1.4401 EN10088-3
--	Compression fittings	1.4401 EN10088-3 + Brass	1.4401 EN10088-3

TYPICAL INSTALLATION



TYPICAL APPLICATION

