

FLANGIA A COLLARINO A SALDARE, PN10

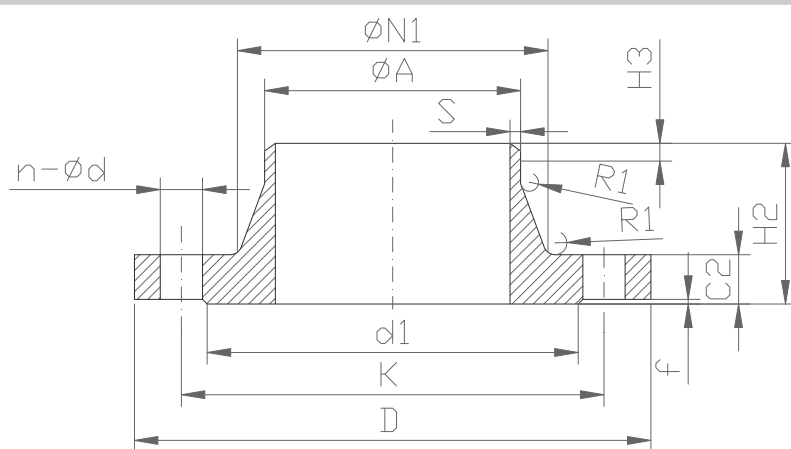
WELD NECK FLANGE, PN10

NORME PRODOTTO:
MATERIALI:

UNI 2281
Acciaio al carbonio

PRODUCT STANDARDS:
MATERIALS:

UNI 2281
Carbon steel



DN	d1	K	D	n-ød	VITE SCREW	C2	øA	øN1	H2	H3	f	R1	S	PESO kg WEIGHT
15	45	65	95	4-14	M12	14	22.5	32	35	6	2	4	2.5	0.7
20	58	75	105	4-14	M12	16	28.0	40	38	6	2	4	2.5	1.0
25	68	85	115	4-14	M12	16	34.5	45	38	6	2	4	2.8	1.2
32	78	100	140	4-18	M16	16	43.5	56	40	6	2	6	3.0	1.8
40	88	110	150	4-18	M16	16	49.5	64	42	7	3	6	3.0	2.1
50	102	125	165	4-18	M16	18	61.5	75	45	8	3	6	3.5	2.8
65	122	145	185	8-18	M16	18	77.0	90	45	10	3	6	3.5	3.4
80	138	160	200	8-18	M16	20	90.0	105	50	10	3	8	3.7	4.2
100	158	180	220	8-18	M16	20	115.5	131	52	12	3	8	3.7	4.7
125	188	210	250	8-18	M16	22	141.0	156	55	12	3	8	4.0	6.4
150	212	240	285	8-22	M20	22	170.5	184	55	12	3	10	5.0	8.0
200	268	295	340	8-22	M20	24	221.0	235	62	16	3	10	5.0	11.4
250	320	350	395	12-22	M20	26	275.0	292	68	16	3	12	5.5	15.2
300	370	400	445	12-22	M20	26	326.0	344	68	16	4	12	6.0	18.0
350	430	460	505	16-22	M20	26	357.5	385	68	16	4	12	6.4	24.5
400	482	515	565	16-26	M22	26	408.5	440	72	16	4	12	7.0	30.2
450	532	565	615	20-26	M22	26	459.0	478	72	16	4	12	7.3	32.3
500	585	620	670	20-26	M22	28	510.0	542	75	16	4	12	7.3	40.0
600	685	725	780	20-30	M27	28	611.5	642	80	18	5	12	7.3	50.0
700	800	840	895	24-30	M27	30	715.0	745	80	18	5	12	9.0	66.4
800	905	950	1015	24-33	M30	32	817.0	850	90	18	5	12	9.0	89.3
900	1005	1050	1115	28-33	M30	34	918.0	950	95	20	5	12	9.0	104.0
1000	1110	1160	1230	28-36	M33	34	1020.0	1052	95	20	5	16	9.0	121.0



Art. 048016

FLANGIA A COLLARINO A SALDARE, PN16

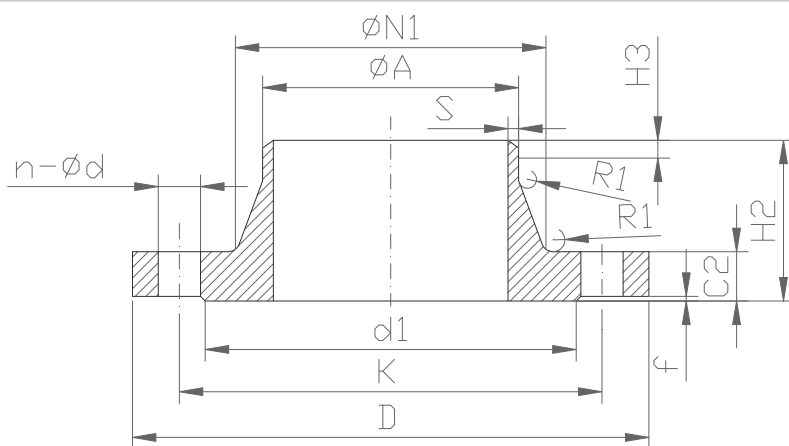
WELD NECK FLANGE, PN16

NORME PRODOTTO:
MATERIALI:

UNI 2282
Acciaio al carbonio

PRODUCT STANDARDS:
MATERIALS:

UNI 2282
Carbon steel



DN	d1	K	D	n - ød	VITE SCREW	C2	øA	øN1	H2	H3	f	R1	S	PESO kg WEIGHT
15	45	65	95	4 -14	M12	14	22.5	32	35	6	2	4	2.5	0.7
20	58	75	105	4 -14	M12	16	28.0	40	38	6	2	4	2.5	1.0
25	68	85	115	4 -14	M12	16	34.5	45	38	6	2	4	2.8	1.2
32	78	100	140	4 -18	M16	16	43.5	56	40	6	2	6	3.0	1.8
40	88	110	150	4 -18	M16	16	49.5	64	42	7	3	6	3.0	2.1
50	102	125	165	4 -18	M16	18	61.5	75	45	8	3	6	3.5	2.8
65	122	145	185	4 -18	M16	18	77.0	90	45	10	3	6	3.5	3.4
80	138	160	200	8 -18	M16	20	90.0	105	50	10	3	8	3.7	4.2
100	158	180	220	8 -18	M16	20	115.5	131	52	12	3	8	3.7	4.7
125	188	210	250	8 -18	M16	22	141.0	156	55	12	3	8	4.0	6.4
150	212	240	285	8 -22	M20	22	170.5	184	55	12	3	10	5.0	8.0
200	268	295	340	12 -22	M20	24	221.0	235	62	16	3	10	5.0	11.1
250	320	355	405	12 -25	M22	26	275.0	292	70	16	3	12	5.5	16.3
300	378	410	460	12 -25	M22	28	326.0	344	78	16	4	12	6.0	21.8
350	438	470	520	16 -25	M22	30	357.5	390	82	16	4	12	6.4	31.7
400	490	525	580	16 -30	M27	32	408.5	445	85	16	4	12	7.0	38.3
450	550	585	640	20 -30	M27	32	459.0	485	85	16	4	12	7.3	45.4
500	610	650	715	20 -33	M30	34	510.0	548	90	16	4	12	7.3	61.1
600	725	770	840	20 -36	M33	36	611.5	652	95	18	5	12	7.3	84.6
700	795	840	910	24 -36	M33	36	715.0	755	100	18	5	12	9.0	87.4
800	900	950	1025	24 -39	M36x3	38	817.0	855	105	20	5	12	9.0	109.0
900	1000	1050	1125	28 -39	M36x3	40	918.0	955	110	20	5	12	10.0	129.0
1000	1115	1170	1255	28 -42	M39x3	42	1020.0	1058	120	22	5	16	12.0	175.0



Art. 048010

FLANGIA A COLLARINO A SALDARE, PN25

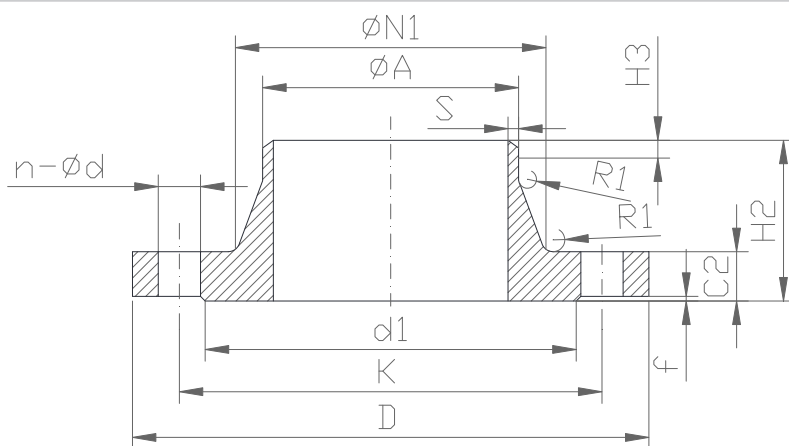
WELD NECK FLANGE, PN25

NORME PRODOTTO:
MATERIALI:

UNI 2283
Acciaio al carbonio

PRODUCT STANDARDS:
MATERIALS:

UNI 2283
Carbon steel



DN	d1	K	D	n-ød	VITE SCREW	C2	øA	øN1	H2	H3	f	R1	S	PESO kg WEIGHT
15	45	65	95	4-14	M12	16	22.5	32	38	6	2	4	2.5	0.8
20	58	75	105	4-14	M12	18	28.0	40	40	6	2	4	2.5	1.1
25	68	85	115	4-14	M12	18	34.5	46	40	6	2	4	2.8	1.4
32	78	100	140	4-18	M16	18	43.5	56	42	6	2	6	3.0	2.0
40	88	110	150	4-18	M16	18	49.5	64	45	7	3	6	3.0	2.3
50	102	125	165	4-18	M16	20	61.5	75	48	8	3	6	3.5	3.1
65	122	145	185	8-18	M16	22	77.0	90	52	10	3	6	3.5	3.9
80	138	160	200	8-18	M16	24	90.0	105	58	12	3	8	3.7	5.0
100	162	190	235	8-22	M20	24	115.5	134	65	12	3	8	3.7	6.7
125	188	220	270	8-25	M22	26	141.0	162	68	12	3	8	4.0	9.2
150	218	250	300	8-25	M22	28	170.5	192	75	12	3	10	5.0	12.0
200	278	310	360	12-25	M22	30	221.0	244	80	16	3	10	5.0	16.8
250	355	370	425	12-30	M27	32	275.0	298	88	18	3	12	5.5	23.3
300	390	430	485	16-30	M27	34	326.0	352	92	18	4	12	6.0	30.5
350	450	490	555	16-33	M30	38	357.5	398	100	20	4	12	6.4	47.6
400	505	550	620	16-36	M33	40	408.5	452	110	20	4	12	7.3	62.1
450	555	600	670	20-36	M33	40	459.0	492	115	20	4	12	8.0	67.8
500	615	660	730	20-36	M33	44	510.0	558	125	20	4	12	8.0	88.8
600	720	770	845	20-39	M36x3	46	611.5	660	125	20	5	12	8.0	114.0
700	820	875	960	24-42	M39x3	46	715.0	760	125	20	5	12	10.0	138.0
800	930	990	1085	24-48	M45x3	50	817.0	865	135	22	5	12	11.0	185.0
900	1030	1090	1185	28-48	M45x3	54	918.0	968	145	24	5	12	12.0	224.0
1000	1140	1210	1320	28-56	M52x3	58	1020.0	1070	155	24	5	16	13.0	293.0



Art. 048023

FLANGIA A COLLARINO A SALDARE, PN40

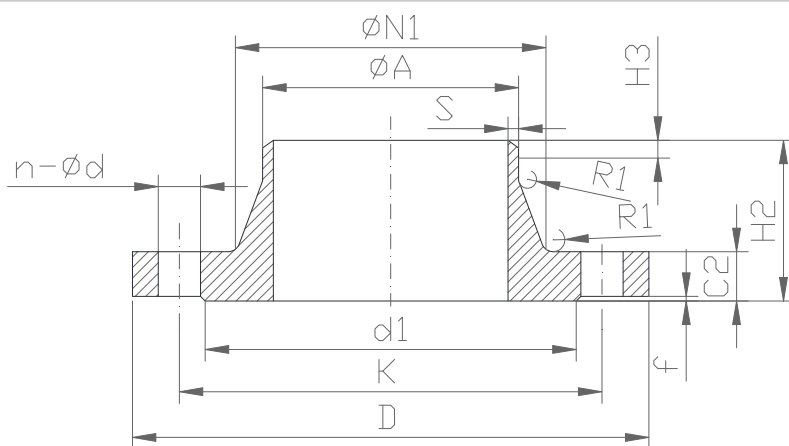
WELD NECK FLANGE, PN40

NORME PRODOTTO:
MATERIALI:

UNI 2284
Acciaio al carbonio

PRODUCT STANDARDS:
MATERIALS:

UNI 2284
Carbon steel



DN	d1	K	D	n-ød	VITE SCREW	C2	øA	øN1	H2	H3	f	R1	S	PESO kg WEIGHT
15	45	65	95	4-14	M12	16	22.5	32	38	6	2	4	2.5	0.8
20	58	75	105	4-14	M12	18	28.0	40	40	6	2	4	2.5	1.1
25	68	85	115	4-14	M12	18	34.5	46	40	6	2	4	2.8	1.4
32	78	100	140	4-18	M16	18	43.5	56	42	6	2	6	3.0	2.0
40	88	110	150	4-18	M16	18	49.5	64	45	7	3	6	3.0	2.3
50	102	125	165	4-18	M16	20	61.5	75	48	8	3	6	3.5	3.1
65	122	145	185	8-18	M16	22	77.0	90	52	10	3	6	3.5	3.9
80	138	160	200	8-18	M16	24	90.0	105	58	12	3	8	3.7	5.0
100	162	190	235	8-22	M20	24	115.5	134	65	12	3	8	3.7	6.7
125	188	220	270	8-25	M22	26	141.0	162	68	12	3	8	4.0	9.2
150	218	250	300	8-25	M22	28	170.5	192	75	12	3	10	5.0	12.0
200	285	320	375	12-30	M27	34	221.0	244	88	16	3	10	5.5	20.8
250	345	385	450	12-33	M30	38	275.0	306	105	18	3	12	6.5	33.8
300	410	450	515	16-33	M30	42	326.0	362	115	18	4	12	7.3	47.4
350	465	510	580	16-36	M33	46	357.5	408	125	20	4	12	8.0	69.0
400	535	585	660	16-39	M36x3	50	408.5	462	135	20	4	12	9.0	96.0
450	560	610	685	20-39	M36x3	50	459.0	500	135	20	4	12	9.0	91.6
500	615	670	755	20-42	M39x3	52	510.0	562	140	20	4	12	10.0	117.0
600	735	795	890	20-48	M45x3	54	611.5	666	145	20	5	12	18.0	145.0