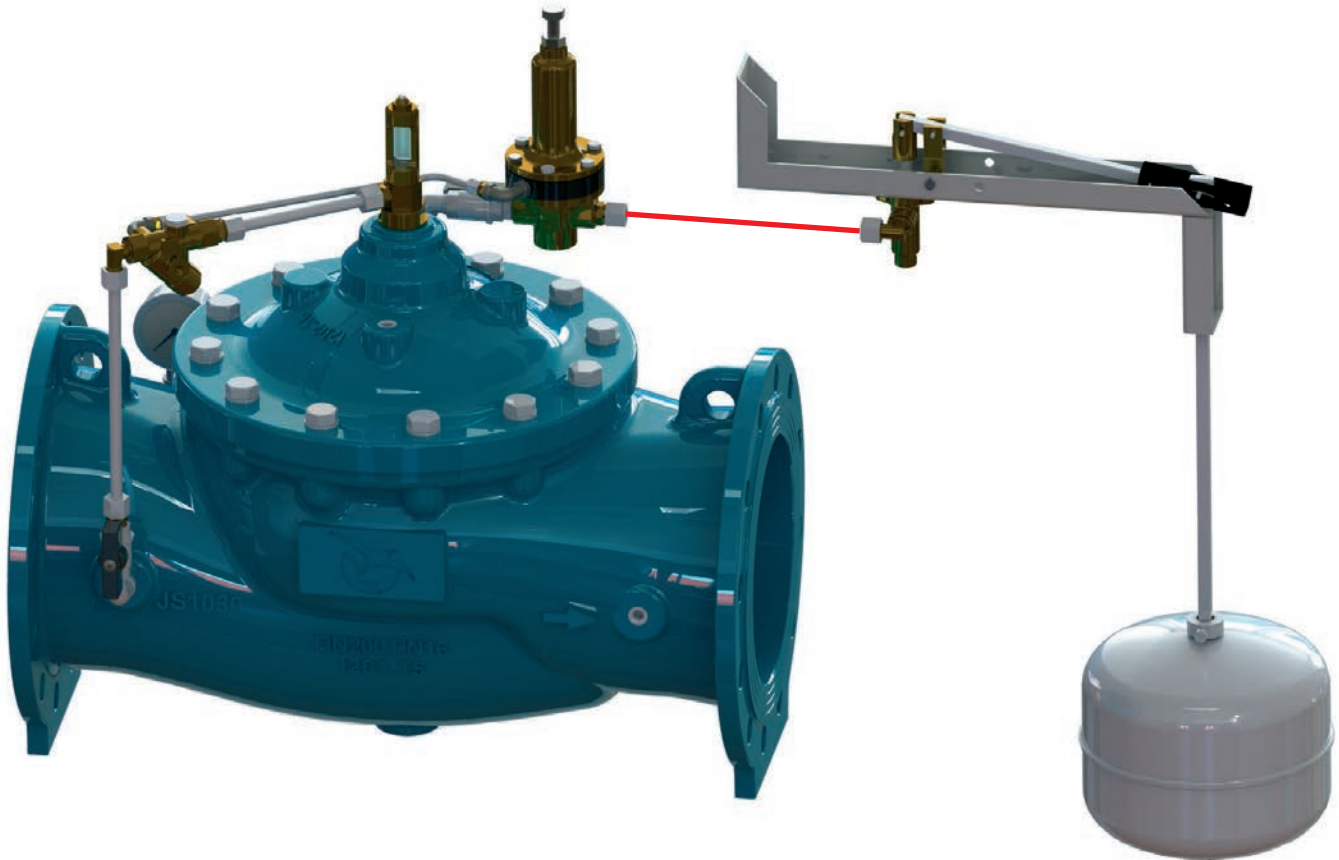


M3520 • FLOAT CONTROLLED MODUATING CONSTANT LEVEL AND PRESSURE SUSTAINING VALVE



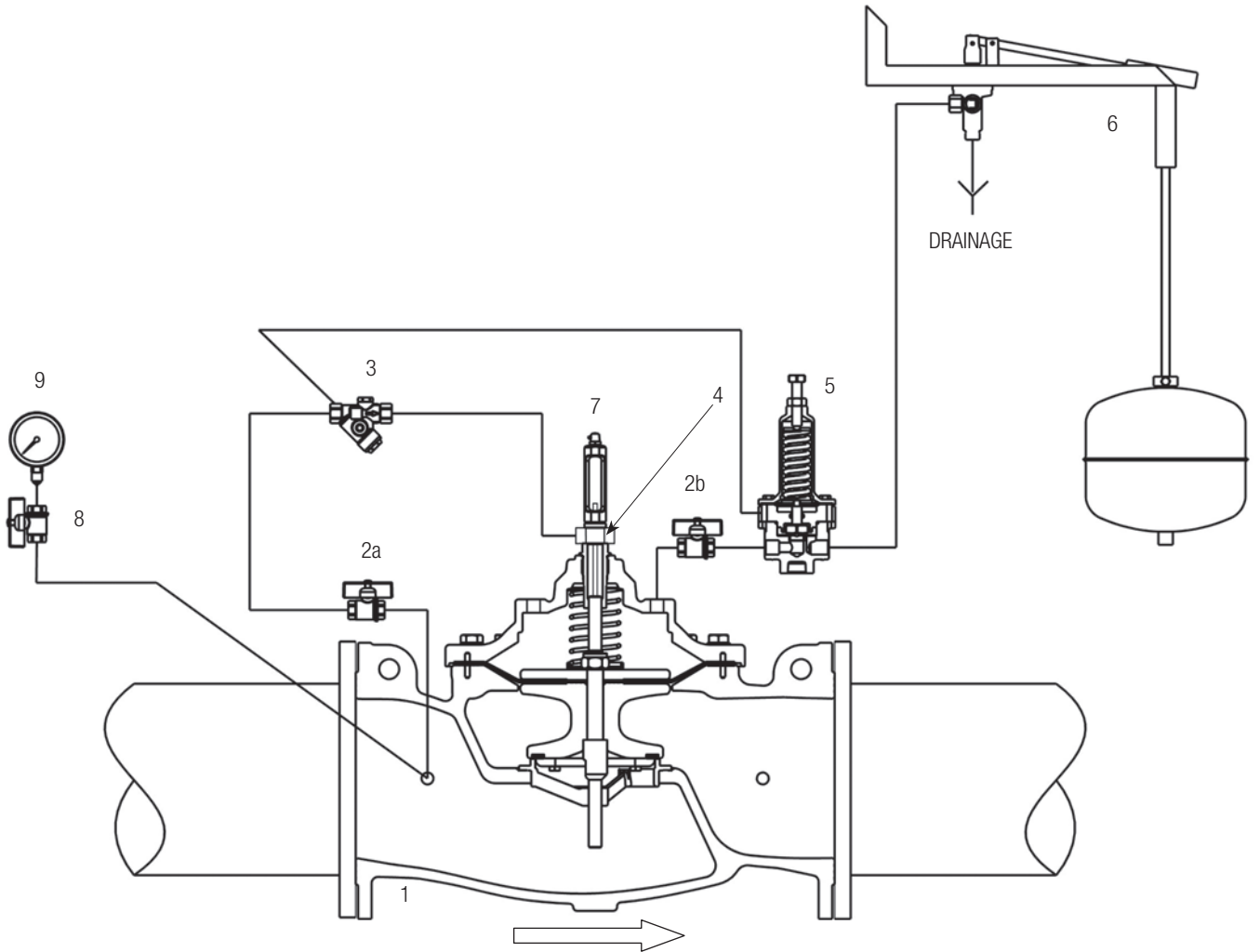
OPERATING PRINCIPLE

The pilot float control enables the valve to maintain a constant level in a reservoir within a variation range of 10 cm. The combined action of the float pilot and the synchronizer machined on the valve stem, ensures an accurate and stable modulation, keeping a balance between the flow required from the network and the flow adducted by the valve into the tank. By means the pressure sustaining pilot, the valve maintains a minimum setting inlet pressure.

ADDITIONAL FUNCTIONS

- shut-off with electrical remote control;
- non-return;
- anti-freeze device;
- relief function.

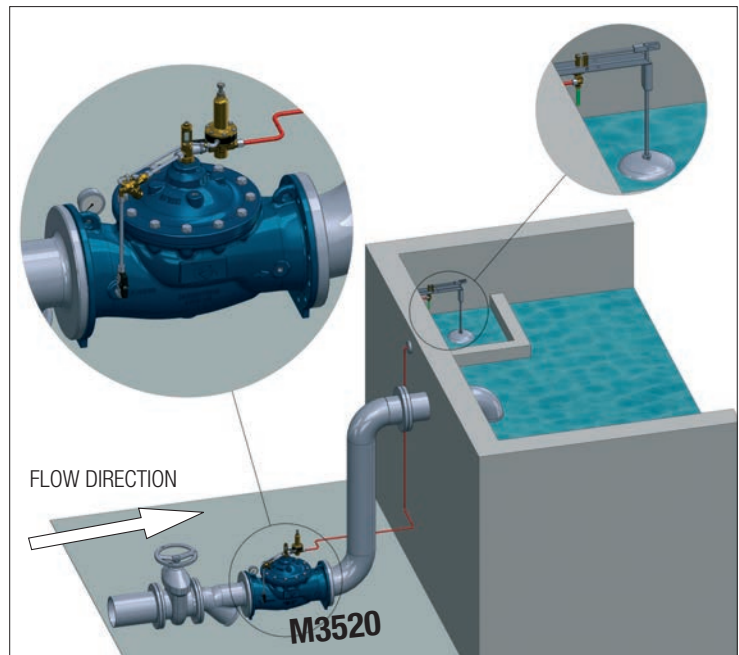
CIRCUIT AND MATERIALS



ITEM	DESCRIPTION	MATERIALS
1	Main valve	GJS400-15 EN1563
2 (a,b)	Isolating ball valve	Ni-plated Brass
3	Y - strainer with calibrated orifice	1.4401 EN10088-3 + Brass
4	Hydraulic synchronizer	1.4301 EN10088-3 + Brass
5	Pressure sustaining pilot CM200	1.4401 EN10088-3 + Brass
6	CL500 float pilot	1.4301 EN10088-3 + Brass
7	Position indicator with manual venting cock	Brass + Hardened glass
8	Gauge holder with drainage hole	Ni-plated Brass
9	Pressure gauge	1.4301 EN10088-3 + Glycerine
--	Pipe	1.4401 EN10088-3
--	Fittings	1.4401 EN10088-3
--	Compression fittings	1.4401 EN10088-3 + Brass

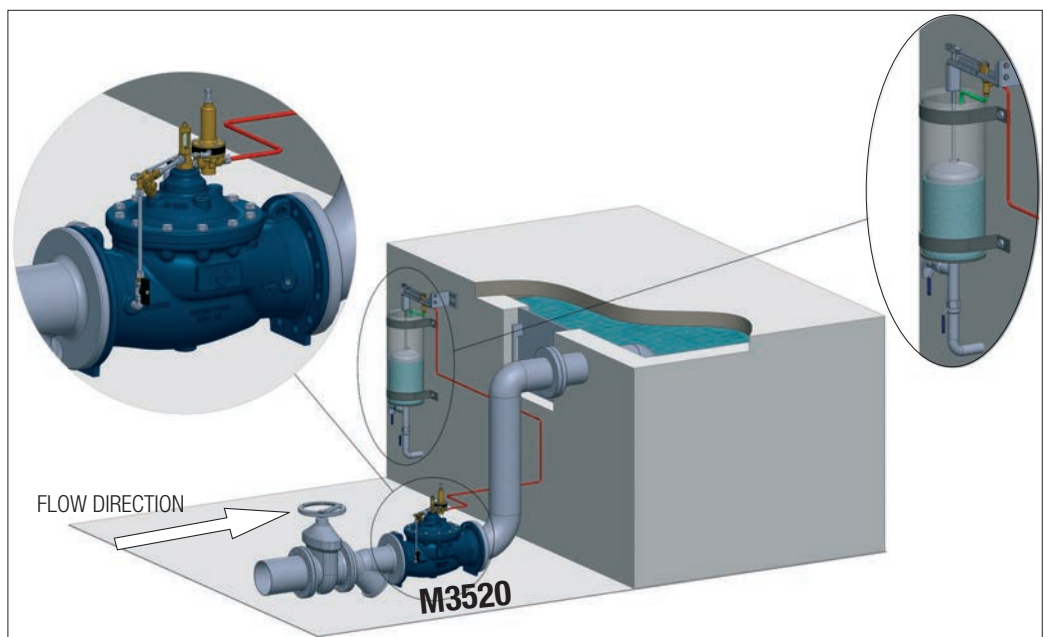
INSTALLATION: TYPE A

IN-TANK INSTALLATION. (Float located in a calm zone)



INSTALLATION: TYPE B

OUT-OF-TANK INSTALLATION



TYPICAL APPLICATION

