



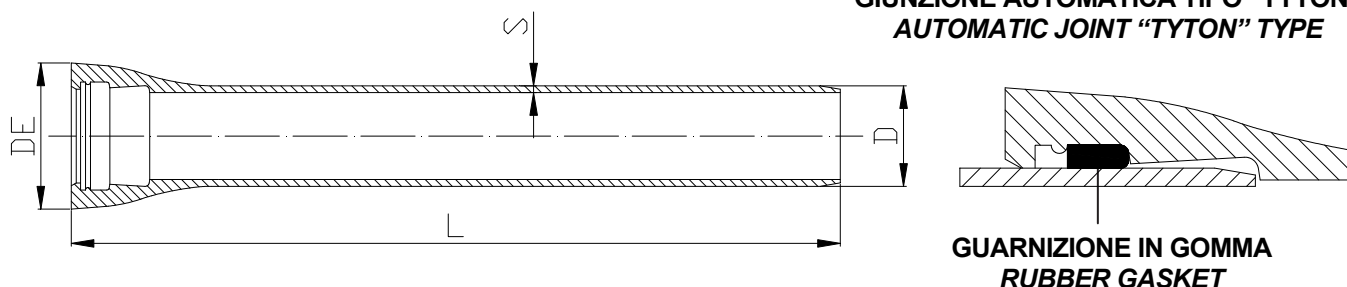
Art. 004010

TUBI IN GHISA SFEROIDALE (C40)**DUCTILE IRON PIPES (C40)****APPLICAZIONE:**

Fornitura e distribuzione acqua potabile.

APPLICATION:

Drinkable water supply and distribution.

**GIUNZIONE AUTOMATICA TIPO "TYTON"
AUTOMATIC JOINT "TYTON" TYPE****GUARNIZIONE IN GOMMA
RUBBER GASKET****NORME PRODOTTO:** EN 545
ISO 2531**RIVESTIMENTO ESTERNO**

Rivestimento in zinco metallico applicato con spruzzatura pneumatica, seguito da uno strato di finitura a base di prodotto bituminoso o resina sintetica.

Norme applicabili: EN 545
ISO 8179**RIVESTIMENTO INTERNO**

Rivestimento interno in malta di cemento, applicato a mezzo centrifuga.

Norme applicabili: EN 545
ISO 4179

Spessore rivestimento da DN80 a DN300: 4mm (-1.5mm di tolleranza)

PRODUCT STANDARDS: EN 545
ISO 2531**EXTERNAL COATING**

Metallic zinc sprayed coating, with a finishing layer of bituminous paint (with fillers).

Applicable standards: EN 545
ISO 8179**INTERNAL COATING**

Internal cement mortar lining, centrifugally applied as per the following standards.

Applicable standards: EN 545
ISO 4179

Internal thickness from DN80 to DN300: 4mm (-1.5mm of tolerance)

DN	D	Toll. D	DE	S	Toll. S	L (m)	W (kg)
80	98	+1/-2.7	145	4.8	-1.3	5.5	74.4
100	118	+1/-2.8	166	4.8	-1.3	5.5	91.2
125	144	+1/-2.8	195	4.8	-1.3	5.5	113
150	170	+1/-2.9	219	5.0	-1.5	5.5	135
200	222	+1/-3.0	275	5.4	-1.5	5.5	179
250	274	+1/-3.1	328	5.8	-1.6	5.5	234
300	326	+1/-3.3	384	6.2	-1.6	5.5	289
350	378	+1/-3.4	436	7.0	-1.7	5.5	-

DN	D	Toll. D	DE	S	Toll. S	L (m)	W (kg)
400	429	+1/-3.5	494	7.8	-1.7	5.5	-
450	480	+1/-3.6	-	-	-	5.5	-
500	532	+1/-3.8	600	-	-	5.5	-
600	635	+1/-4.0	710	-	-	5.5	-
700	738	+1/-4.3	820	-	-	5.5	-
800	842	+1/-4.5	930	-	-	5.5	-
900	945	+1/-4.8	-	-	-	5.5	-
1000	1048	+1/-5.0	-	-	-	5.5	-