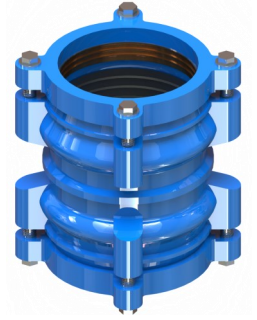




ART. N334 A



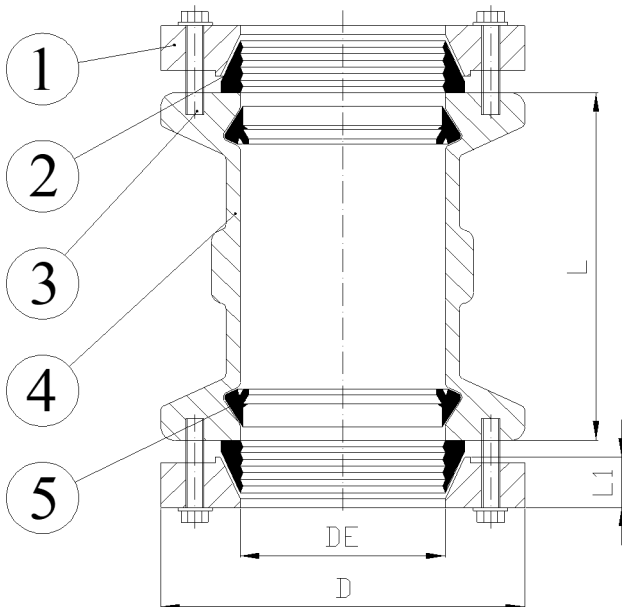
## BIGIUNTO CON ANTISFILAMENTO PN16 RESTRAINT COUPLING PN16

### APPLICAZIONE:

Collegamento di tubi per acqua in PE.

### APPLICATION:

PE water pipes connections.



CARATTERISTICHE PRINCIPALI - MAIN FEATURES	
<b>COLLAUDI:</b>	EN 12266-1
<b>PRESSIONE ESERCIZIO:</b>	Max. 16bar
<b>TEMP. ESERCIZIO:</b>	Max. +70°C
<b>COPPIA DI SERRAGGIO:</b>	70Nm da effettuarsi con chiave dinamometrica.
<b>TESTS:</b>	EN 12266-1
<b>WORKING PRESSURE:</b>	Max. 16bar
<b>WORKING TEMP.:</b>	Max. +70°C
<b>TIGHTENING TORQUE:</b>	70Nm to be carried out with dynamometer wrench.

RIVESTIMENTO - COATING	
Esterno/interno con polvere epossidica di colore blu e spessore 250µm. External/internal FBE coating process with epoxy resin powder of blue colour and thickness of 250µm.	

DE	VITE / SCREW		L (mm)	L1 (mm)	D (mm)	W (kg)
	M	NR.				
75	M12	2	127	15	145	3.5
90	M12	4	127	15	158	4.8
110	M12	4	128	16	180	5.7
125	M12	4	132	18	195	6.1
140	M12	4	145	18	214	7.4
160	M12	4	170	18	235	10.1
180	M12	4	186	19	255	12.2

	COMPONENTI - PARTS	MATERIALI - MATERIALS
1	ANELLO END RING	EN GJS400-15 EN GJS400-15
2	ANELLO ANTISFILAMENTO GRIP RING	OTTONE BRASS
3	VITE E RONDELLA SCREW AND WASHER	ACCIAIO INOX A2-70 STAINLESS STEEL A2-70
4	CORPO BODY	EN GJS400-15 EN GJS400-15
5	GUARNIZIONE GASKET	EPDM EPDM