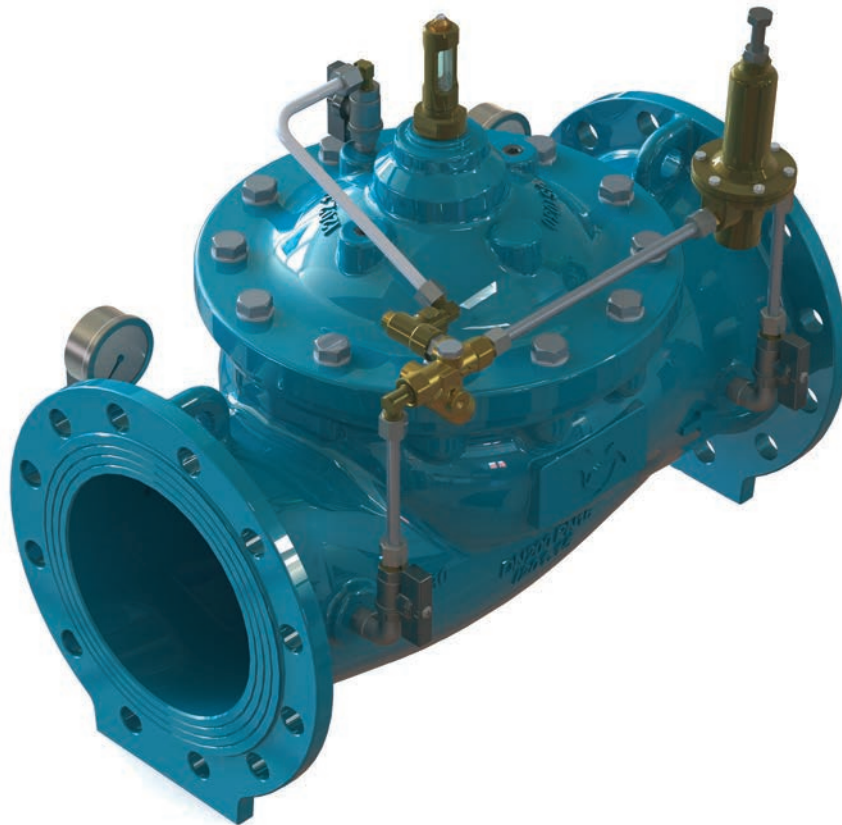


M3100 • PRESSURE REDUCING VALVE



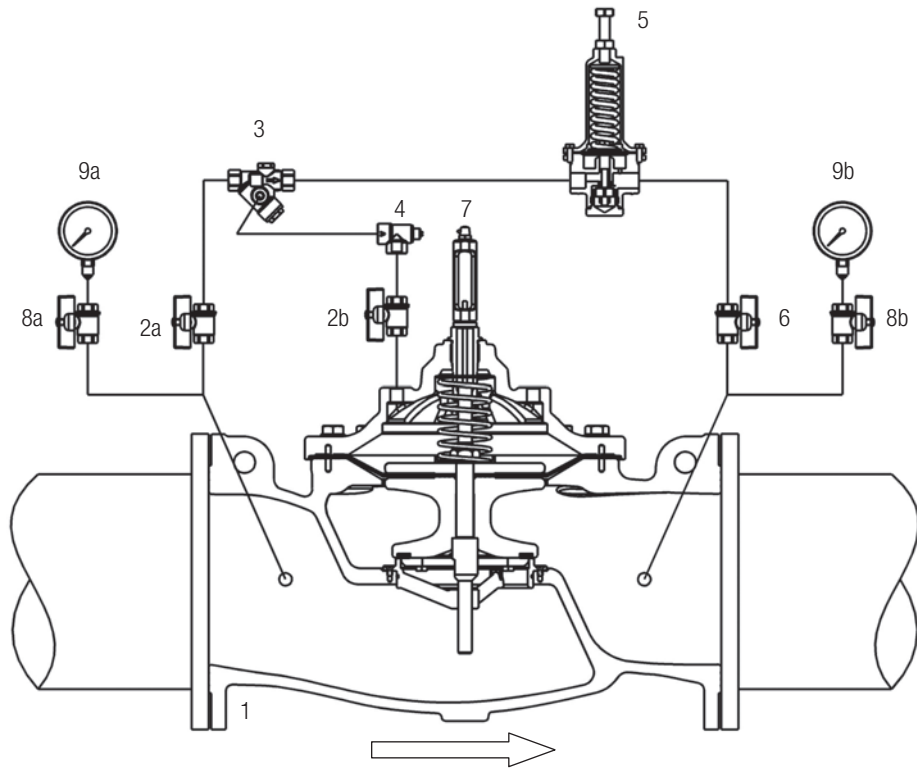
OPERATING PRINCIPLE

This valve reduces and stabilizes the downstream pressure at a preset value independently of the flow rate and upstream pressure variations. This type of valve is widely used in main water supply and distribution systems. The purpose of this valve is to ensure an outlet reduced and stabilized pressure.

ADDITIONAL FUNCTIONS

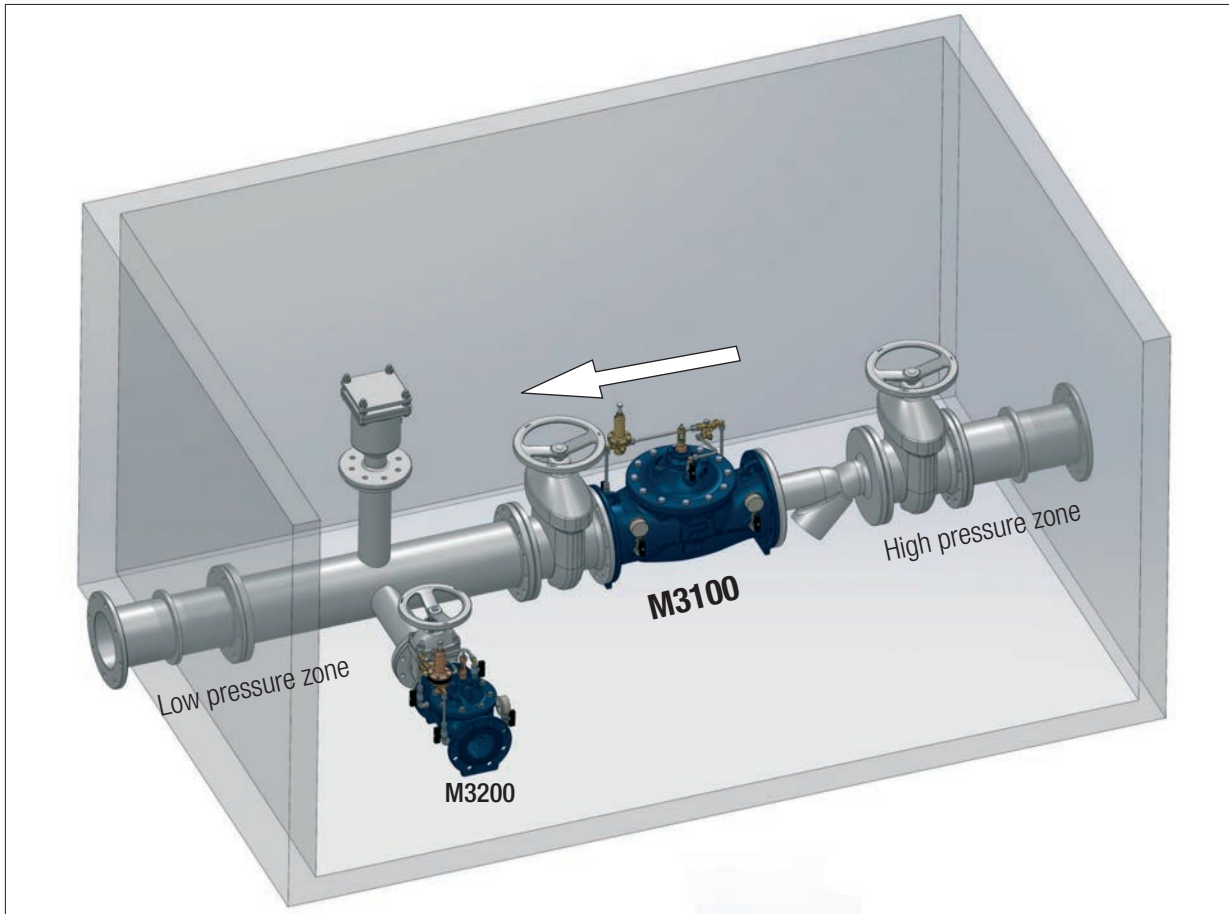
- sustaining a minimum upstream pressure (see M3120);
- shut-off by remote electrical control;
- non-return
- reverse opening device;
- opening in case of inlet pressure drop;
- two adjustable reduction values both with electrical remote control and with fully manual hydraulic system;
- flow rate control;
- minimum-maximum level control with float pilot and dissipating plate fitted downstream of the valve.

CIRCUIT AND MATERIALS



| ITEM | DESCRIPTION | MATERIALS |
|---------|---|------------------------------|
| 1 | Main valve | GJS400-15 EN1563 |
| 2 (a,b) | Isolating ball valve | Ni-plated Brass |
| 3 | Y - strainer with calibrated orifice | 1.4401 EN10088-3 + Brass |
| 4 | Monodirectional needle valve | 1.4401 EN10088-3 + Brass |
| 5 | Pressure reducing pilot CV100 | 1.4401 EN10088-3 + Brass |
| 6 | Isolating ball valve | Ni-plated Brass |
| 7 | Position indicator with manual venting cock | Brass + Hardened glass |
| 8 (a,b) | Gauge holder with drainage | Ni-plated Brass |
| 9 (a,b) | Pressure gauge | 1.4301 EN10088-3 + Glycerine |
| -- | Pipe | 1.4401 EN10088-3 |
| -- | Fittings | 1.4401 EN10088-3 |
| -- | Compression fittings | 1.4401 EN10088-3 + Brass |

TYPICAL INSTALLATION



TYPICAL APPLICATION

