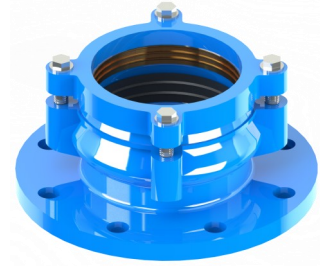




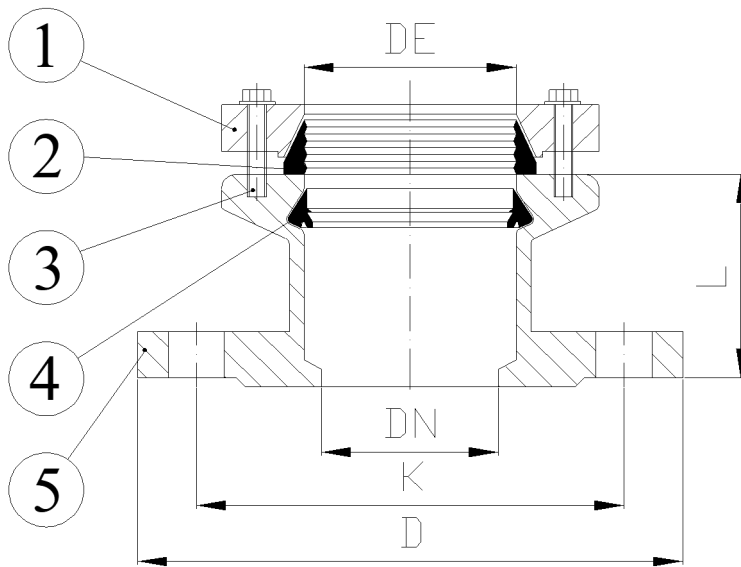
ART. N335 A



GIUNTO FLANGIATO CON ANTIFILAMENTO PN16 RESTRAINT FLANGE ADAPTOR PN16

APPLICAZIONE:
Collegamento di tubi per acqua in PE.

APPLICATION:
PE water pipes connections.



CARATTERISTICHE PRINCIPALI - MAIN FEATURES	
FLANGIA:	Foratura PN16 in accordo a EN1092
COLLAUDI:	EN 12266-1
PRESSIONE ESERCIZIO:	Max. 16bar
TEMP. ESERCIZIO:	Max. +70°C
COPPIA DI SERRAGGIO:	70Nm da effettuarsi con chiave dinamometrica.
FLANGE:	Boring PN16 according to EN1092
TESTS:	EN 12266-1
WORKING PRESSURE:	Max. 16bar
WORKING TEMP.:	Max. +70°C
TIGHTENING TORQUE:	70Nm to be carried out with dynamometer wrench.

RIVESTIMENTO - COATING	
Esterno/interno con polvere epossidica di colore blu e spessore 250µm. External/internal FBE coating process with epoxy resin powder of blue colour and thickness of 250µm.	

DN	DE	K	D	L	VITE / SCREW		W (kg)
		(mm)	(mm)	(mm)	M	NR.	
DN65	75	145	185	72	M12	2	4.3
DN80	90	160	200	72	M12	4	5.2
DN100	110	180	220	73	M12	4	6
DN125	125	210	250	75	M12	4	5.9
DN125	140	210	250	75	M12	4	7.8
DN150	160	240	285	95	M12	4	10.3
DN150	180	240	285	95	M12	4	10.7

	COMPONENTI - PARTS	MATERIALI - MATERIALS
1	ANELLO END RING	EN GJS400-15 EN GJS400-15
2	ANELLO ANTIFILAMENTO GRIP RING	OTTONE BRASS
3	VITE E RONDELLA SCREW AND WASHER	ACCIAIO INOX A2-70 STAINLESS STEEL A2-70
4	GUARNIZIONE GASKET	EPDM EPDM
5	CORPO BODY	EN GJS400-15 EN GJS400-15