

FLANGIA PER CARTELLA PE - PN16

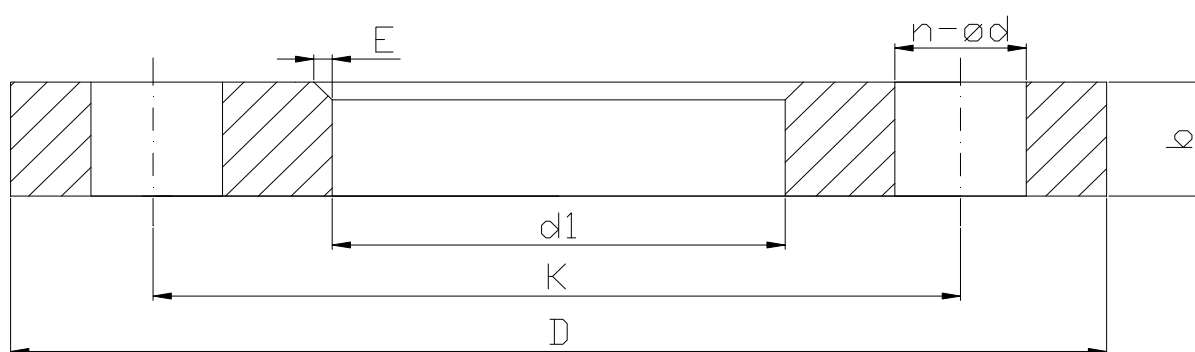
FLANGE FOR PE FLANGE ADAPTOR - PN16

DIMENSIONI:
MATERIALI:

EN 1092-1
Acciaio al carbonio

DIMENSIONS:
MATERIALS:

EN 1092-1
Carbon steel



TUBO PE PE PIPE [DN]	DN	d1	K	D	n-ød	b	VITE SCREW	E	PESO WEIGHT [kg]
20	15	28	65	95	4 -14	14	M12	1	0,5
25	20	34	75	105	4 -14	16	M12	2	1,0
32	25	42	85	115	4 -14	16	M12	2	1,0
40	32	51	100	140	4 -18	18	M16	3	2,0
50	40	62	110	150	4 -18	18	M16	3	2,0
63	50	78	125	165	4 -18	20	M16	3	2,5
75	65	92	145	185	8 -18	20	M16	4	3,5
90	80	108	160	200	8 -18	20	M16	4	4,0
110	100	128	180	220	8 -18	22	M16	4	6,0
125	100	135	180	220	8 -18	22	M16	4	6,0
140	125	158	210	250	8 -18	22	M16	4	8,0
160	150	178	240	285	8 -22	24	M20	4	10,0
180	150	188	240	285	8 -22	24	M20	4	10,0
200	200	235	295	340	12 -22	26	M20	4	11,0
225	200	238	295	340	12 -22	26	M20	4	11,0
250	250	288	355	405	12 -26	29	M24	6	12,0
280	250	294	355	405	12 -26	29	M24	6	12,0
315	300	338	410	460	12 -26	32	M24	6	17,0
355	350	376	470	520	16 -26	35	M24	6	22,5
400	400	430	525	580	16 -30	38	M27	6	28,5