

# T.i.S.

## Art. 038020 TIS1 (BIG SIZE)

**COLLARE DI PRESA IN BIANCO BS (GRANDI DIAMETRI), PE100, SDR 11**

**BRANCH SADDLES (BIG SIZE), PE 100, SDR 11**

**APPLICAZIONE:**

Impianti di acquedottistica, di convogliamento gas combustibili, di fognature civili ed industriali, di irrigazione etc...

**APPLICATION:**

Water pipeline systems, for gas, civil and industrial sewerage, irrigation etc...

**NORME PRODOTTO:**

UNI EN 1555-3  
UNI EN 12201-3

**PRODUCT STANDARS:**

UNI EN 1555-3  
UNI EN 12201-3

**TEMPERATURA DI ESERCIZIO:**

Max. +60°C

**WORKING TEMPERATURE:**

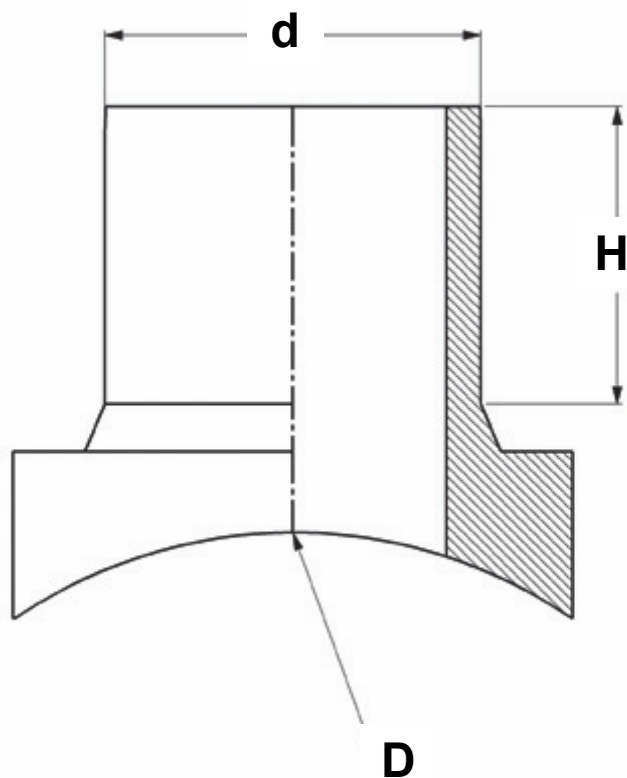
Max. +60°C

**PRESSIONE DI ESERCIZIO MAX:**

Acqua PN16  
Gas S5

**MAX WORKING PRESSURE:**

Water PN16  
Gas S5





**Art. 038020 TIS1  
(BIG SIZE)**

D	d	H
110	75	150
110	90	90
125	90	90
125	110	110
140	75	90
140	90	90
140	110	110
140	125	90
160	75	90
160	90	90
160	110	110
160	125	90
160	140	110
180	75	90
180	90	90
180	110	110
180	125	90
180	140	110
180	160	140
200	75	90
200	90	90
200	110	110
200	125	90
200	140	110
200	160	140
200	180	150
225	75	90
225	90	90
225	110	110
225	125	90
225	140	110
225	160	140
225	180	150
250	75	90
250	90	90
250	110	110
250	125	90
250	140	110
250	160	140
250	180	150
250	200	130
250	225	150
280	75	90
280	90	90
280	110	110
280	125	90
280	140	110
280	160	140

D	d	H
280	180	150
280	200	130
280	225	150
315	75	90
315	90	90
315	110	110
315	125	90
315	140	110
315	160	140
315	180	150
315	200	130
315	225	150
315	250	145
355	75	90
355	90	90
355	110	110
355	125	90
355	140	110
355	160	140
355	180	150
355	200	130
355	225	150
355	250	145
400	75	90
400	90	90
400	110	110
400	125	90
400	140	110
400	160	140
400	180	150
400	200	130
400	225	150
400	250	145
450	75	90
450	90	90
450	110	110
450	125	90
450	140	110
450	160	140
450	180	150
450	200	150
450	225	150
450	250	145
500	75	150
500	90	150
500	110	110
500	125	150
500	140	110

D	d	H
500	160	140
500	180	150
500	200	130
500	225	150
500	250	145
560	75	150
560	90	150
560	110	110
560	125	150
560	140	110
560	160	140
560	180	150
560	200	130
560	225	150
560	250	145
630	75	150
630	90	150
630	110	110
630	125	150
630	140	110
630	160	140
630	180	150
630	200	130
630	225	150
630	250	145
710	75	150
710	90	150
710	110	110
710	125	150
710	140	110
710	160	140
710	180	150
710	200	130
710	225	150
710	250	145
800	75	150
800	90	150
800	110	110
800	125	150
800	140	110
800	160	140
800	180	150
800	200	130
800	225	150
800	250	145
900	75	150
900	90	150
900	110	110

D	d	H
900	125	150
900	140	110
900	160	140
900	180	150
900	200	130
900	225	150
900	250	145
1000	75	150
1000	90	150
1000	110	110
1000	125	150
1000	140	110
1000	160	140
1000	180	150
1000	200	130
1000	225	150
1000	250	145
1200	75	150
1200	90	150
1200	110	110
1200	125	150
1200	140	110
1200	160	140
1200	180	150
1200	200	130
1200	225	150
1200	250	145
1400	75	150
1400	90	150
1400	110	110
1400	125	150
1400	140	110
1400	160	140
1400	180	150
1400	200	130
1400	225	150
1400	250	145
1600	75	150
1600	90	150
1600	110	110
1600	125	150
1600	140	110
1600	160	140
1600	180	150
1600	200	160
1600	225	150
1600	250	145
-	-	-