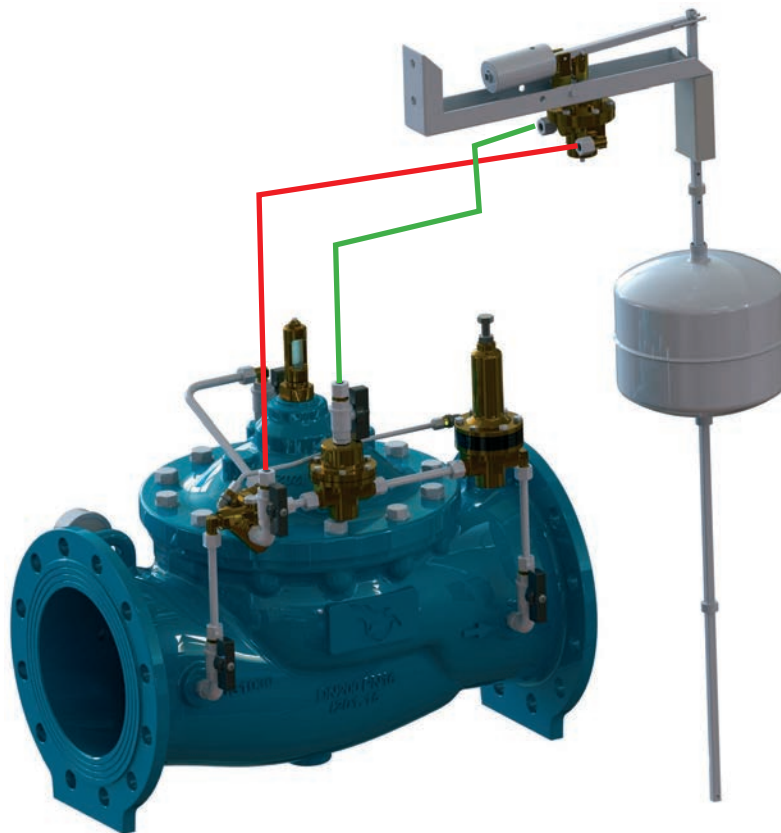


## M3620 • FLOAT CONTROLLED ON-OFF AND PRESSURE SUSTAINING VALVE



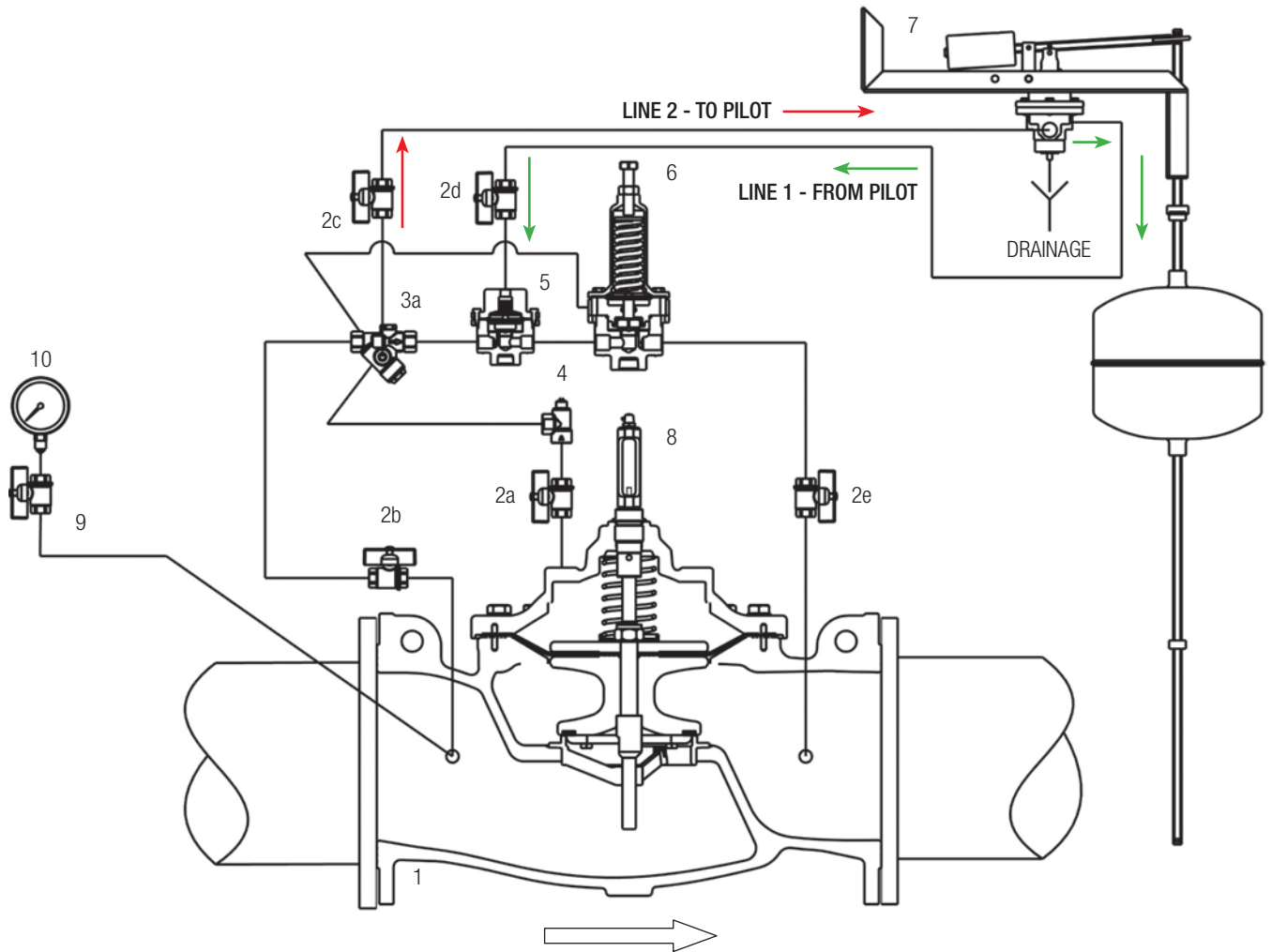
### OPERATING PRINCIPLE

The valve controls the minimum (valve opens) and maximum (valve close) water levels in a reservoir using a three-way float pilot. The two trigger levels are easily adjusted by moving the clamps on the float extension rod. Adjustment is between a minimum of 10 cm to a maximum of about 65 cm. By means the pressure sustaining pilot, the valve maintains a minimum setting inlet pressure..

### ADDITIONAL FUNCTIONS

- shut-off with electrical remote control;
- non-return;
- anti-freeze device;
- flow rate control;
- pressure reduction with dissipated plate;
- relief function.

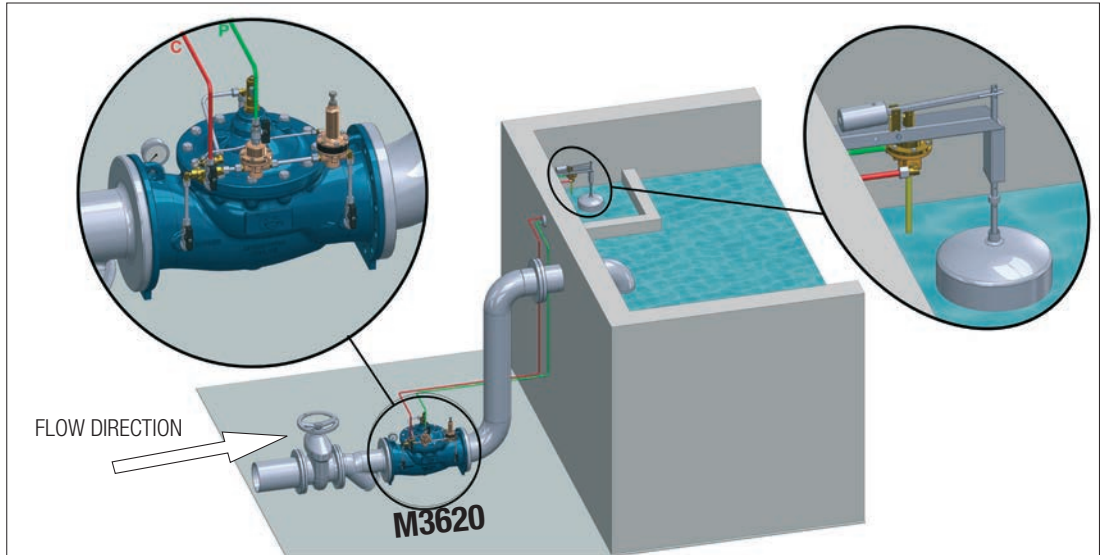
CIRCUIT AND MATERIALS



ITEM	DESCRIPTION	MATERIALS
1	Main valve	GJS400-15 EN1563
2 (a,b,c,d,e)	Isolating ball valve	Ni-plated Brass
3	Y - strainer with calibrated orifice	1.4401 EN10088-3 + Brass
4	Monodirectional needle valve	1.4401 EN10088-3 + Brass
5	Auxiliary to way N.O. valve VA200	1.4301 EN10088-3 + Brass
6	Pressure sustaining pilot CM200	1.4401 EN10088-3 + Brass
7	CL600 on-off float pilot	1.4301 EN10088-3 + Brass
8	Position indicator with manual venting cock	Brass + Hardened glass
9	Gauge holder with drainage	Ni-plated Brass
10	Pressure gauge	1.4301 EN10088-3 + Glycerine
--	Pipe	1.4401 EN10088-3
--	Fittings	1.4401 EN10088-3
--	Compression fittings	1.4401 EN10088-3 + Brass

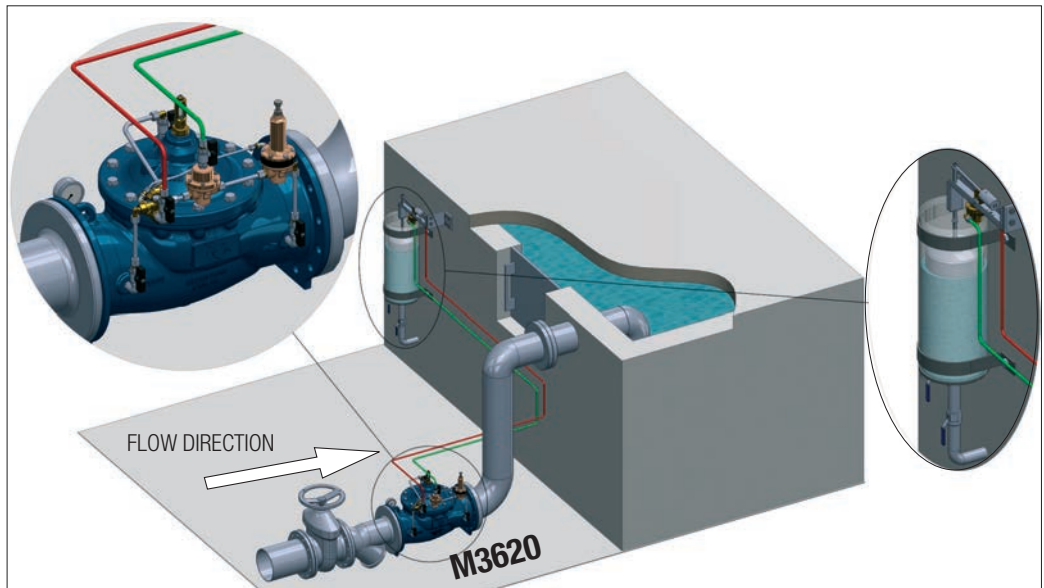
**INSTALLATION: TYPE A**

IN-TANK INSTALLATION. (Float placed in a calm zone)



**INSTALLATION: TYPE B**

OUT-OF-TANK INSTALLATION.



**TYPICAL APPLICATION**

