

PN16 Art. 038004TIS1

GOMITO A 45° CODOLO LUNGO, PE 100, SDR11

ELBOW 45° LONG SPIGOT, PE 100, SDR11

APPLICAZIONE:

Impianti di acquedottistica, di convogliamento gas combustibili, di fognature civili ed industriali, di irrigazione etc...

APPLICATION:

Water pipeline systems, for gas, civil and industrial sewerage, irrigation etc...

NORME PRODOTTO:

UNI EN 1555-3
UNI EN 12201-3

PRODUCT STANDARDS:

UNI EN 1555-3
UNI EN 12201-3

TEMPERATURA D'ESERCIZIO:

Max. +60°C

WORKING TEMPERATURE:

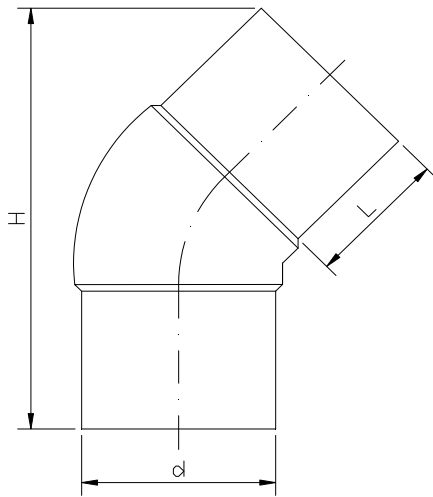
Max. +60°C

PRESSIONE DI ESERCIZIO MAX:

Acqua PN16
Gas S5

MAX WORKING PRESSURE:

Water PN16
Gas S5



d	20	25	32	40	50	63	75	90	110	125	140	160	180	200	225	250	280	315
H	80	100	115	130	140	160	210	215	250	285	315	320	360	360	450	450	450	500
L	36	43	50	53	57	65	88	90	92	100	115	115	120	120	140	140	140	140