



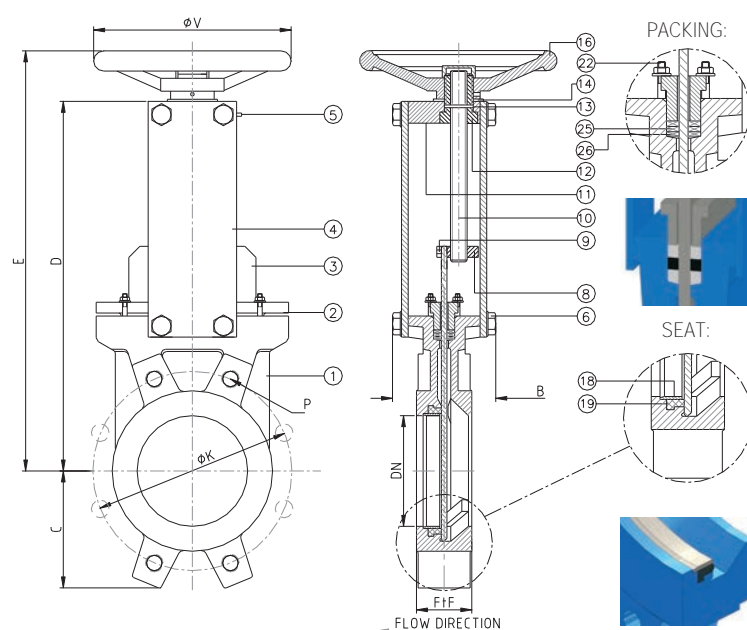
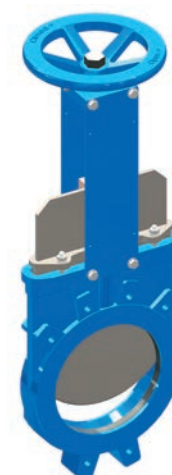
## PN 10 - ART. A012/Z

**SARACINESCA A GHIGLIOTTINA MONODIREZIONALE MONOBLOCCO ASTA NON SALIENTE PN10**  
**MONOBLOCK KNIFE GATE VALVE MONODIRECTIONAL TYPE NON RISING STEM PN10**
**APPLICAZIONE:**

Fornitura e distribuzione acqua, trattamento acque reflue e sistemi fognari.

**APPLICATION:**

Water supply and distribution, waste water treatment and sewerage.



CARATTERISTICHE PRINCIPALI - MAIN FEATURES	
<b>FLANGE:</b>	Foratura secondo EN 1092-2 PN10
<b>COLLAUDI:</b>	EN12266-1 in accordo alla PS della valvola
<b>TEMPERATURA ESERCIZIO:</b>	Max. $\leq +90^{\circ}\text{C}$
<b>FLANGES:</b>	Drilled according to EN 1092-2 PN10
<b>TESTS:</b>	EN 12266-1 according to the valve PS
<b>WORKING TEMPERATURE:</b>	Max. $\leq +90^{\circ}\text{C}$

PRESSIONE MASSIMA AMMISSIBILE DI ESERCIZIO (PS): MAXIMUM ALLOWABLE WORKING PRESSURE (PS):		
DN50-250 PN10	DN300-400 PN6	DN450-DN600 PN4

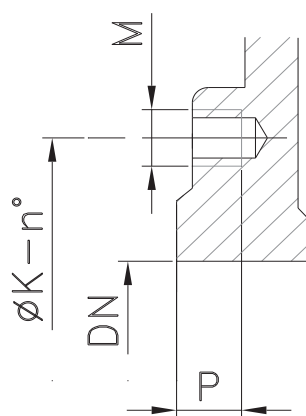
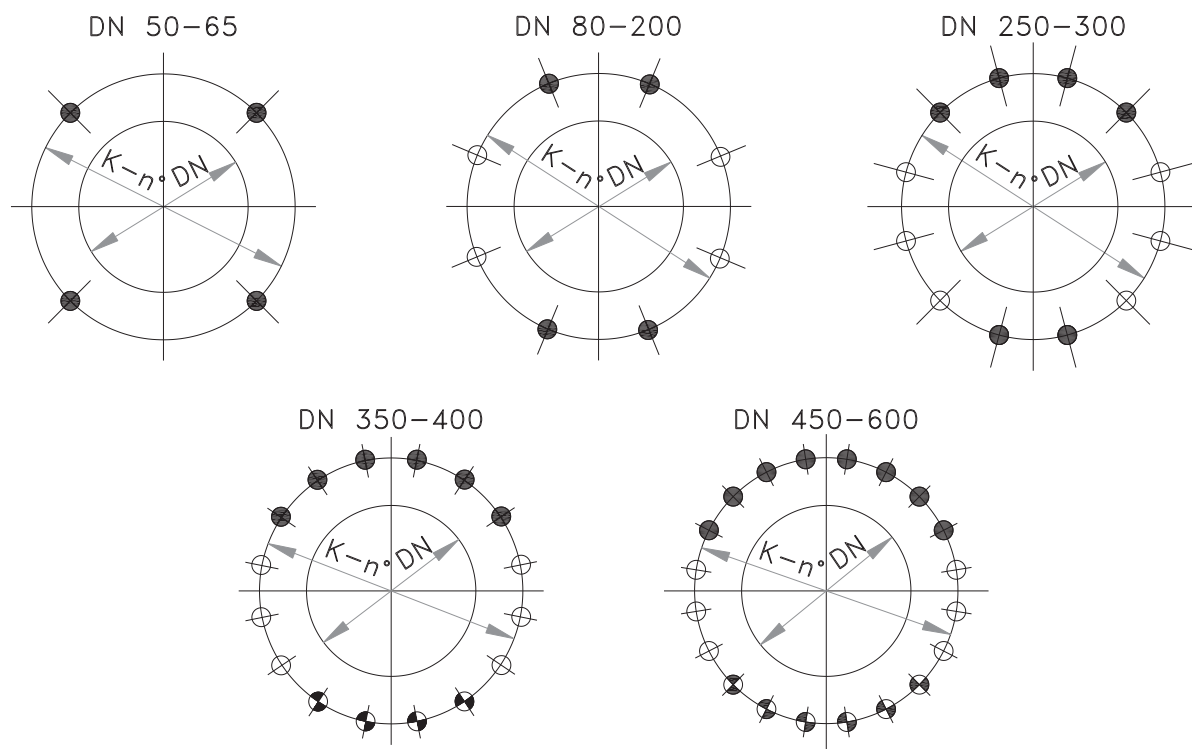
	COMPONENTI - PARTS	MATERIALI - MATERIALS
1	CORPO BODY	EN-GJL 250 EN-GJL 250
2	PREMISTOPPA PACKING GLAND	ALLUMINIO fino a DN300 ALUMINUM up to DN300 GHISA SFEROIDALE dal DN350 in su DUCTILE IRON from DN350 upward
3	PARATIA KNIFE	ACCIAIO INOX AISI 304L AISI 304L STAINLESS STEEL
4	SUPPORTO SUPPORT PLATE	ACCIAIO STEEL
5	INGRASSATORE GREASER	STANDARD STANDARD
6 - 9	BULLONI BOLTS	ACCIAIO INOX A2-70 A2-70 STAINLESS STEEL
8	MADREVITE STEM NUT	BRONZO BRONZE
10	ASSE STEM	ACCIAIO INOX AISI 303 AISI 303 STAINLESS STEEL
11	SUPPORTO SUPPORT BRIDGE	ACCIAIO STEEL
12	BOCCOLA SUPPORTO STEM BUSHING	OTTONE BRASS
13	PERNO PIN	ACCIAIO INOX A2-70 A2-70 STAINLESS STEEL
14	RONDELLA WASHER	OTTONE BRASS
16	VOLANTINO HANDWHEEL	EN-GJL 250 EN-GJL 250
18	ANELLO DI TENUTA SEAT RING	ACCIAIO INOX AISI 316L AISI 316L STAINLESS STEEL
19	GUARNIZIONE GASKET	GOMMA EPDM EPDM RUBBER
24	BULLONI BOLTS	ACCIAIO INOX A2-70 A2-70 STAINLESS STEEL
25	O-RING BADERNA PACKING O-RING	EPDM EPDM
26	BADERNA PACKING	CORDA TEFLONATA SYNETIC FIBERS + PTFE

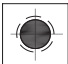


DN	K	n-M	FtF	B	C	D	E	ØV	W (kg)
50	125	4-M16	40	82	65	240	285	200	8
65	145	4-M16	40	82	68	267	310	200	9
80	160	8-M16	50	85	90	292	336	200	10
100	180	8-M16	50	85	105	338	382	200	12
125	210	8-M16	50	92	120	367	430	250	15
150	240	8-M20	60	92	135	417	480	250	19
200	295	8-M20	60	120	170	521	605	300	32
250	350	12-M20	70	120	205	622	697	300	44
300	400	12-M20	70	120	240	722	797	300	57
350	460	16-M20	96	192	258	898	1074	400	107
400	515	16-M24	100	192	295	1003	1167	400	132
450	565	20-M24	106	192	318	1093	1175	500	160
500	620	20-M24	110	192	345	1207	1284	500	180
600	725	20-M27	110	290	405	1410	1487	500	292




RIVESTIMENTO - COATING
Esterno/interno con polvere epossidica di colore blu RAL 5015 e spessore 80µm.
External/internal with epoxy resin powder of blue colour RAL 5015 and thickness of 80µm.



**DETTAGLIO DELLE FLANGE EN1092-2 PN10**  
**EN1092-2 PN10 FLANGE DETAILS**



-  FORO FILETTATO CIECO  
BLIND TAPPED BOLT HOLES
-  FORO FILETTATO PASSANTE  
TAPPED THROUGH
-  FORI PASSANTI  
THROUGH GOING BORE

DN	$\varnothing K$	$n^{\circ}$	M	P			
50	125	4	M16	10	4	—	—
65	145	4	M16	10	4	—	—
80	160	8	M16	10	4	—	4
100	180	8	M16	10	4	—	4
125	210	8	M16	10	4	—	4
150	240	8	M20	14	4	—	4
200	295	8	M20	14	4	—	4
250	350	12	M20	18	6	—	6
300	400	12	M20	18	6	—	6
350	460	16	M20	22	6	4	6
400	515	16	M24	24	6	4	6
450	565	20	M24	24	8	6	6
500	620	20	M24	24	8	6	6
600	725	20	M27	24	8	6	6