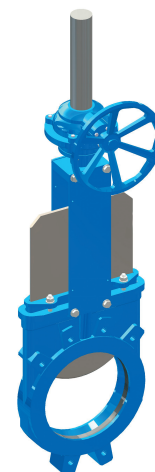




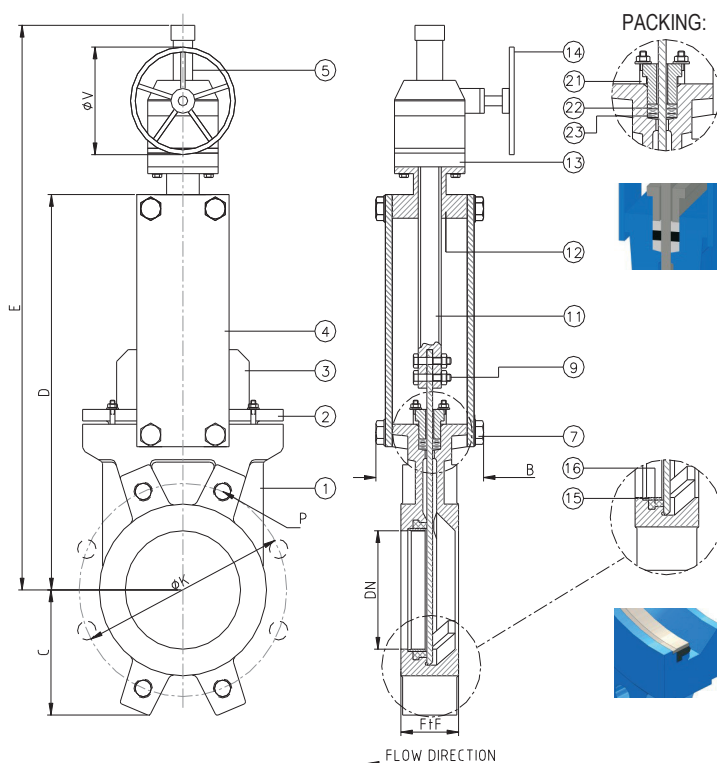
PN 10 - ART. A013/Z - M

SARACINESCA A GHILOTTINA MONODIREZIONALE MONOBLOCCO ASTA SALIENTE PN10 CON RIDUTTORE MANUALE A VOLANTINO
MONOBLOCK KNIFE GATE VALVE MONODIRECTIONAL TYPE RISING STEM PN10 WITH MANUAL GEARBOX AND HANDWHEEL
**APPLICAZIONE:**

Fornitura e distribuzione acqua, trattamento acque reflue e sistemi fognari, settori industriali.

APPLICATION:

Water supply and distribution, waste water treatment and sewerage.

**PACKING:**

CARATTERISTICHE PRINCIPALI - MAIN FEATURES	
FLANGE:	Foratura secondo EN 1092-2 PN10
COLLAUDI:	EN 12266-1 in accordo alla PS della valvola
TEMPERATURA ESERCIZIO:	Max. $\leq +90^{\circ}\text{C}$
FLANGES:	Drilled according to EN 1092-2 PN10
TESTS:	EN 12266-1 according to the valve PS
WORKING TEMPERATURE:	Max. $\leq +90^{\circ}\text{C}$

PRESSIONE MASSIMA AMMISSIBILE DI ESERCIZIO (PS): MAXIMUM ALLOWABLE WORKING PRESSURE (PS):		
DN50-250 PN10	DN300-400 PN6	DN450-DN600 PN4

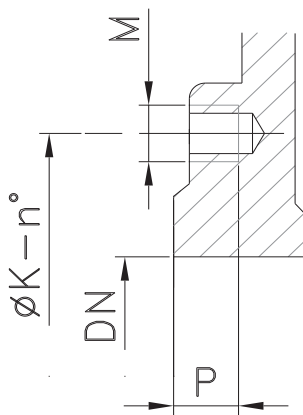
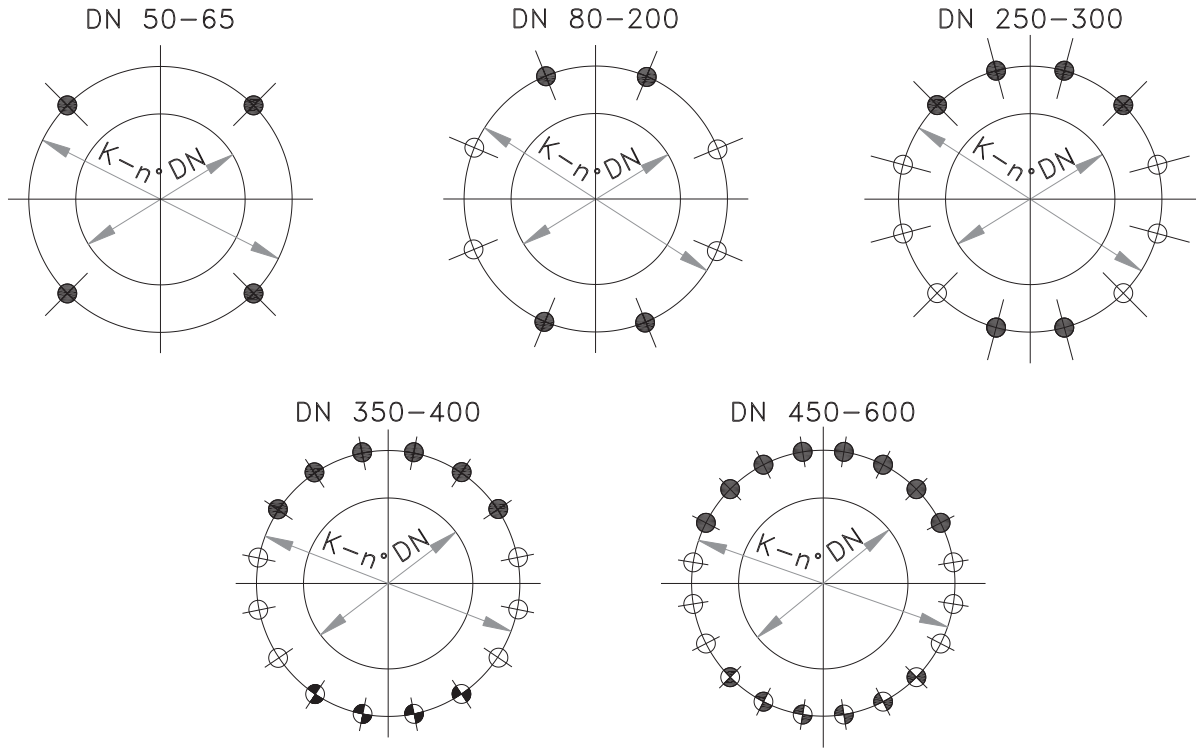
	COMPONENTI - PARTS	MATERIALI - MATERIALS
1	CORPO BODY	EN-GJL 250 EN-GJL 250
2	PREMISTOPPA PACKING GLAND	ALLUMINIO fino a DN300 ALUMINUM up to DN300 GHISA SFEROIDALE dal DN350 in su DUCTILE IRON from DN350 upward
3	PARATIA KNIFE	ACCIAIO INOX AISI 304L AISI 304L STAINLESS STEEL
4	SUPPORTO SUPPORT	ACCIAIO STEEL
5	TUBO RIPARATORE PROTECTIVE PIPE	ACCIAIO STEEL
7 - 9	BULLONI BOLTS	ACCIAIO INOX A2-70 A2-70 STAINLESS STEEL
11	ASSE STEM	ACCIAIO INOX AISI 303 AISI 303 STAINLESS STEEL
12	SUPPORTO SUPPORT BRIDGE	ACCIAIO STEEL
13	RIDUTTORE DI SFORZO GEARBOX	-
14	VOLANTINO HANDWHEEL	EN-GJL 250 EN-GJL 250
15	ANELLO DI TENUTA SEAT RING	ACCIAIO INOX AISI 316L AISI 316L STAINLESS STEEL
16	GUARNIZIONE GASKET	GOMMA EPDM EPDM RUBBER
21	BULLONI BOLTS	ACCIAIO INOX A2-70 A2-70 STAINLESS STEEL
22	O-RING BADERNA PACKING O-RING	EPDM EPDM
23	BADERNA PACKING	CORDA TEFLONATA SYNTHETIC FIBERS + PTFE




DN	K	n-M	FtF	B	C	D	E	ØV	W (kg)
200	295	8-M20	60	120	170	522	930	300	43.5
250	350	12-M20	70	120	205	625	1130	300	56
300	400	12-M20	70	120	240	725	1230	300	69
350	460	16-M20	96	192	258	845	1502	450	125
400	515	16-M24	100	192	295	945	1607	450	150
450	565	20-M24	106	192	318	1045	1697	450	178
500	620	20-M24	110	192	345	1148	1813	450	198
600	725	20-M27	110	290	405	1360	2148	450	310

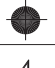


RIVESTIMENTO - COATING
Esterno/interno con polvere epossidica di colore blu RAL 5015 e spessore 80µm. External/internal with epoxy resin powder of blue colour RAL 5015 and thickness of 80µm.



DETTAGLIO DELLE FLANGE EN1092-2 PN10
EN1092-2 PN10 FLANGE DETAILS



-  FORO FILETTATO CIECO
BLIND TAPPED BOLT HOLES
-  FORO FILETTATO PASSANTE
TAPPED THROUGH
-  FORI PASSANTI
THROUGH GOING BORE

DN	øK	n°	M	P			
50	125	4	M16	10	4	-	-
65	145	4	M16	10	4	-	-
80	160	8	M16	10	4	-	4
100	180	8	M16	10	4	-	4
125	210	8	M16	10	4	-	4
150	240	8	M20	14	4	-	4
200	295	8	M20	14	4	-	4
250	350	12	M20	18	6	-	6
300	400	12	M20	18	6	-	6
350	460	16	M20	22	6	4	6
400	515	16	M24	24	6	4	6
450	565	20	M24	24	8	6	6
500	620	20	M24	24	8	6	6
600	725	20	M27	24	8	6	6