

Art. 038016

MANICOTTO ELETTRISALDABILE, PE 100, SDR 11

ELECTROFUSION COUPLER, PE 100, SDR 11

APPLICAZIONE:

Impianti di acquedottistica, di convogliamento gas combustibili, di fognature civili ed industriali, di irrigazione etc...

APPLICATION:

Water pipeline systems, for gas, civil and industrial sewerage, irrigation etc...

NORME PRODOTTO:

UNI EN ISO 15494
UNI EN 1555-3
UNI EN 12201-3

PRODUCT STANDARS:

UNI EN ISO 15494
UNI EN 1555-3
UNI EN 12201-3

TEMPERATURA DI ESERCIZIO:

da -40 a +60°C

WORKING TEMPERATURE:

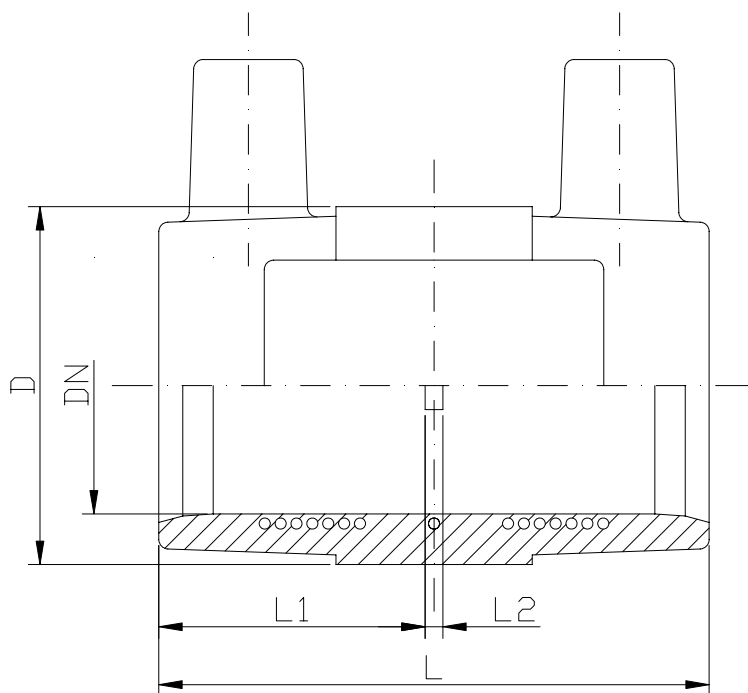
from -40 to +60°C

PRESSIONE DI ESERCIZIO MAX:

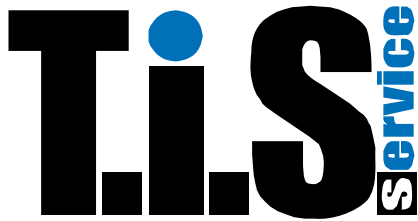
Acqua 16 bar
Gas 5 bar

MAX WORKING PRESSURE:

Water 16 bar
Gas 5 bar



DN	20	25	32	40	50	63	75	90	110	125	140	160	180	200	225	250	280	315	355	400	450	500	
D	36	36	44	57	67	82	100	115	138	150.5	170	190	215	240	280	315	355	400	450	500	555	600	
L1	41	41	42.5	43.5	42	54.5	62.5	66	77.5	82	87	88.5	99.5	99.5	90	110	110	110	130	145	170	180	
L2	3	3	1	1	3	2	3	2	3	3	2	3	3	3	-	-	-	-	-	-	-	-	
L	85	85	86	88	87	111	128	134	158	167	176	180	202	202	180	220	220	220	220	260	290	340	360



Art. 039006

CALOTTA ELETTROSALDABILE, PE 100, SDR 11

ELECTROFUSION END CAP, PE 100, SDR 11

APPLICAZIONE:

Impianti di acquedottistica, di convogliamento gas combustibili, di fognature civili ed industriali, di irrigazione etc...

APPLICATION:

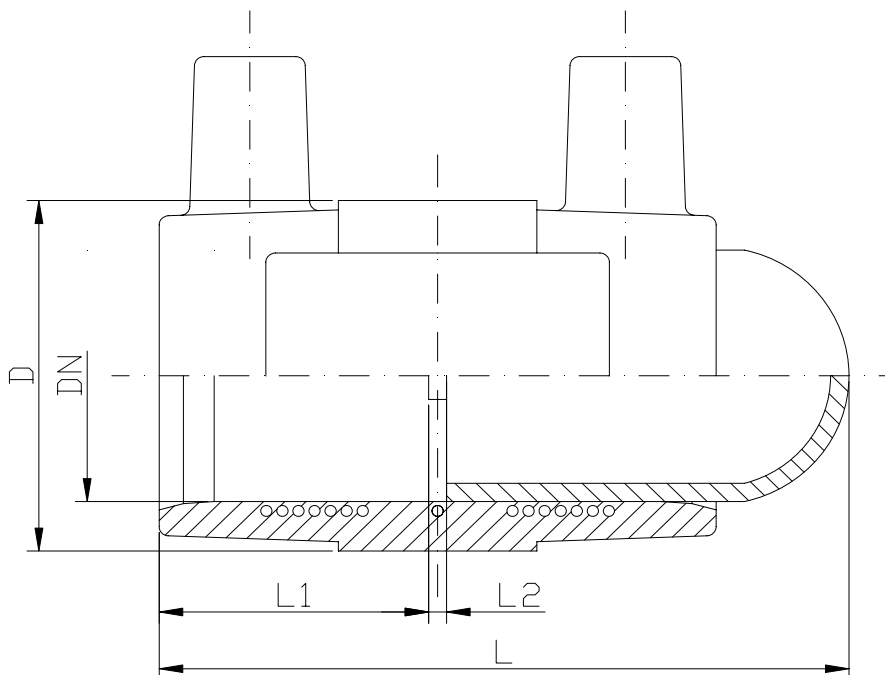
Water pipeline systems, for gas, civil and industrial sewerage, irrigation etc...

NORME PRODOTTO:UNI EN ISO 15494
UNI EN 1555-3
UNI EN 12201-3**PRODUCT STANDARS:**UNI EN ISO 15494
UNI EN 1555-3
UNI EN 12201-3**TEMPERATURA DI ESERCIZIO:**

da -40 a +60°C

WORKING TEMPERATURE:

from -40 to +60°C

PRESSIONE DI ESERCIZIO MAX:Acqua 16 bar
Gas 5 bar**MAX WORKING PRESSURE:**Water 16 bar
Gas 5 bar

DN	20	25	32	40	50	63	75	90	110	125	140	160	180	200	225	250	280	315
D	36	36	44	57	67	82	100	115	141	150.5	170	190	215	240	280	315	355	400
L1	41	41	43	44	42	54.5	63.5	66	77	82	84.5	88.5	99.5	99.5	90	110	110	110
L2	3	3	1	1	3	2	3	2	3	3	2	3	3	3	-	-	-	-
L	90	90	91	94	98	120	134	141	165	197	215	187	228	270	235	260	227	318

Art. 039002

GOMITO ELETTROSALDABILE 90°, PE 100, SDR 11

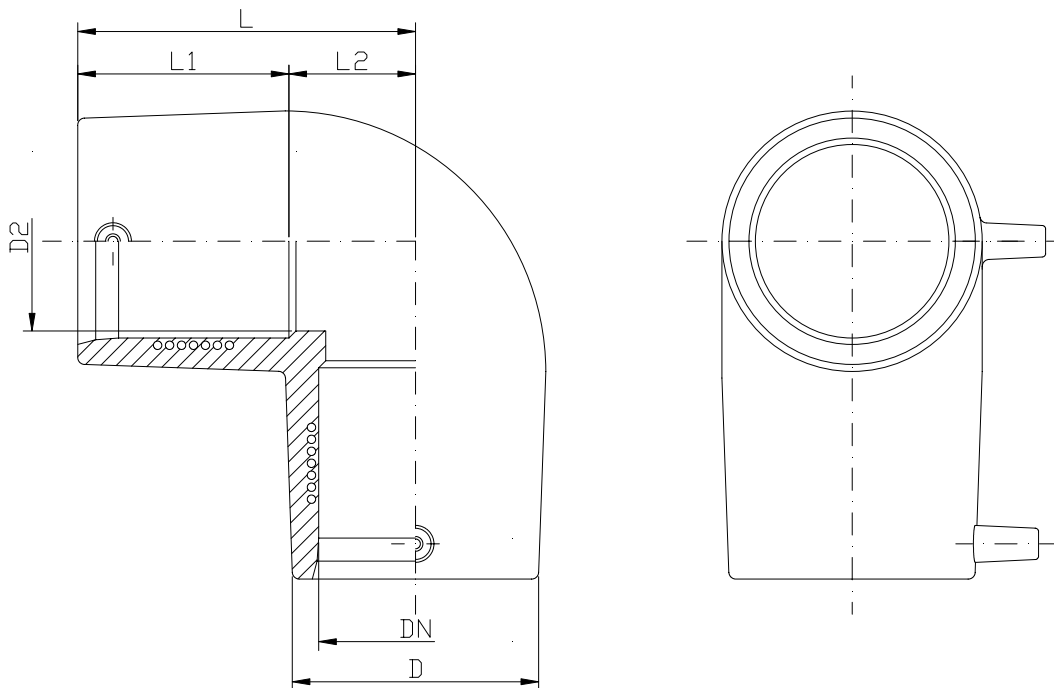
ELECTROFUSION ELBOW 90°, PE 100, SDR 11

APPLICAZIONE:

Impianti di acquedottistica, di convogliamento gas combustibili, di fognature civili ed industriali, di irrigazione etc...

APPLICATION:

Water pipeline systems, for gas, civil and industrial sewerage, irrigation etc...

NORME PRODOTTO:UNI EN ISO 15494
UNI EN 1555-3
UNI EN 12201-3**PRODUCT STANDARS:**UNI EN ISO 15494
UNI EN 1555-3
UNI EN 12201-3**TEMPERATURA DI ESERCIZIO:** da -40 a +60°C**WORKING TEMPERATURE:** from -40 to +60°C**PRESSIONE DI ESERCIZIO MAX:** Acqua 16 bar
Gas 5 bar**MAX WORKING PRESSURE:** Water 16 bar
Gas 5 bar

DN	20	25	32	40	50	63	75	90	110	125	160	180
D	33	33	45	58	67	82	94	107	135	158	197	220
L1	46	46	41	43.5	49	48.5	72.5	73	75	85	100	100
L2	15.5	15.5	19.5	28.5	28.5	45.5	35.5	47.5	55.5	67	100	113
L	61.5	61.5	60.5	72	77.5	94	108	120.5	130.5	152	200	213



Art. 039003

GOMITO ELETTROSALDABILE 45°, PE 100, SDR 11

ELECTROFUSION ELBOW 45°, PE 100, SDR 11

APPLICAZIONE:

Impianti di acquedottistica, di convogliamento gas combustibili, di fognature civili ed industriali, di irrigazione etc...

APPLICATION:

Water pipeline systems, for gas, civil and industrial sewerage, irrigation etc...

NORME PRODOTTO:

UNI EN ISO 15494
UNI EN 1555-3
UNI EN 12201-3

PRODUCT STANDARS:

UNI EN ISO 15494
UNI EN 1555-3
UNI EN 12201-3

TEMPERATURA DI ESERCIZIO:

da -40 a +60°C

WORKING TEMPERATURE:

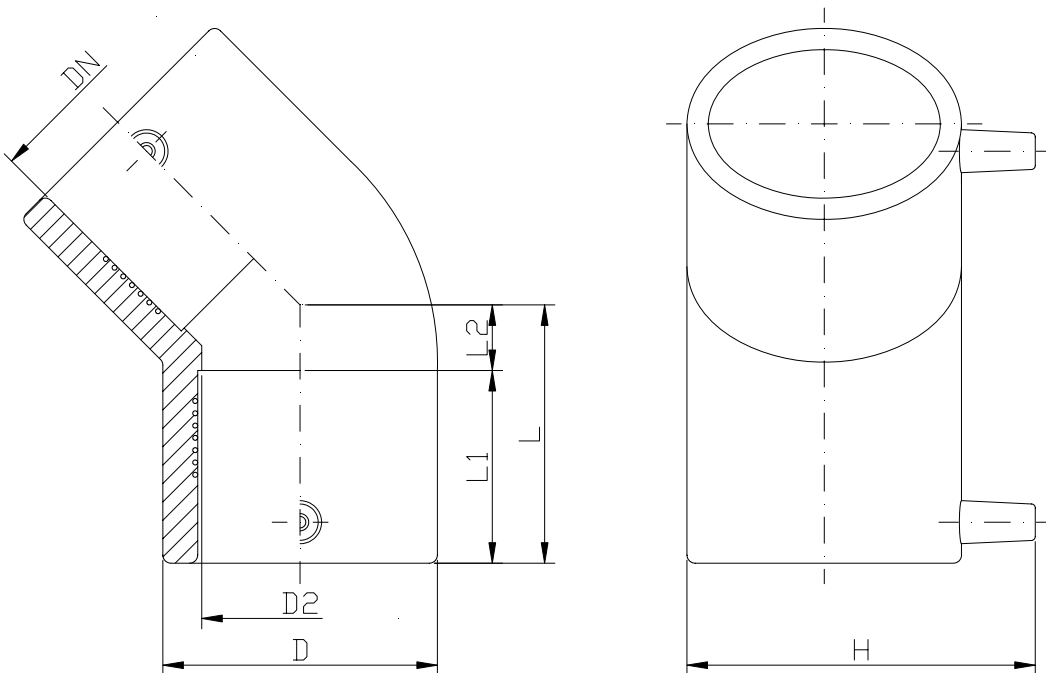
from -40 to +60°C

PRESSIONE DI ESERCIZIO MAX:

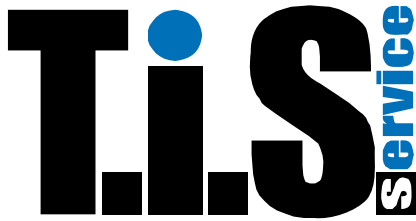
Acqua 16 bar
Gas 5 bar

MAX WORKING PRESSURE:

Water 16 bar
Gas 5 bar



DN	20	25	32	40	50	63	75	90	110	125	160	180
D	33	33	45	58	67	82	97	118	139	158	197	220
L1	46	46	41	44	49	48.5	48	67	79.5	85	100	100
L2	9	9	9.5	14	3	6.5	20	30	32.5	35	50	60
L	55	55	50.5	50	52	55	68	97	112	120	150	160



Art. 039001

TEE ELETTRORISALDABILE CON DERIVAZIONE A CODOLO 90°, PE 100, SDR 11

ELECTROFUSION EQUALE TEE WITH SPIGOT, PE 100, SDR 11

APPLICAZIONE:

Impianti di acquedottistica, di convogliamento gas combustibili, di fognature civili ed industriali, di irrigazione etc...

APPLICATION:

Water pipeline systems, for gas, civil and industrial sewerage, irrigation etc...

NORME PRODOTTO:

UNI EN ISO 15494
UNI EN 1555-3
UNI EN 12201-3

PRODUCT STANDARS:

UNI EN ISO 15494
UNI EN 1555-3
UNI EN 12201-3

TEMPERATURA DI ESERCIZIO:

da -40 a +60°C

WORKING TEMPERATURE:

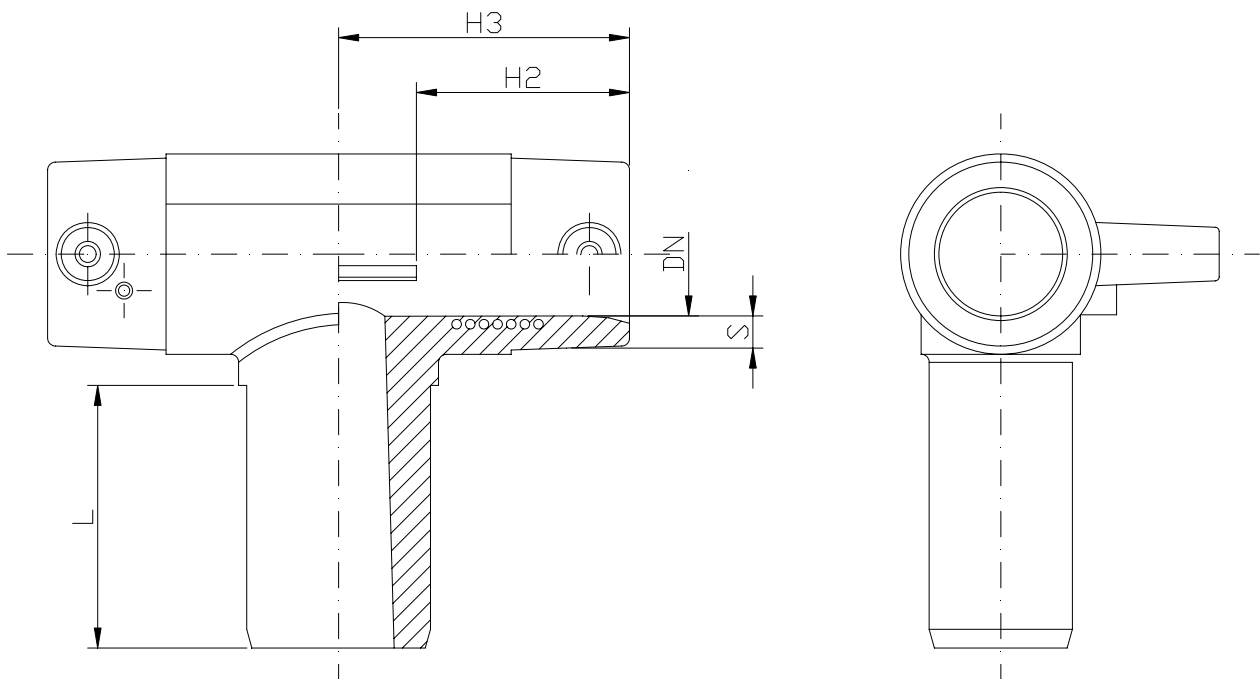
from -40 to +60°C

PRESSIONE DI ESERCIZIO MAX:

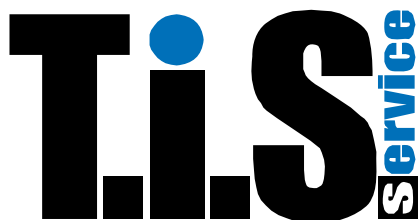
Acqua 16 bar
Gas 5 bar

MAX WORKING PRESSURE:

Water 16 bar
Gas 5 bar



DN	20	25	32	40	50	63	75	90	110	125	160	180
H2	41	43	40	38.5	58.5	52.5	73.5	-	81.5	88	105	105
H3	53.5	53.5	53.5	53.5	78	78	112	-	141	157.5	170	180
S	7.9	6.1	6.6	8.5	8.8	9	10.1	-	10	11.4	14.6	16.4
L	48.5	41	67.5	68	57	62	81.5	-	177	191.5	215	283



Art. 039001

TEE RIDOTTO ELETTRISALDABILE CON DERIVAZIONE A CODOLO 90°, PE 100, SDR 11

ELECTROFUSION REDUCING TEE WITH SPIGOT END, PE 100, SDR 11

APPLICAZIONE:

Impianti di acquedottistica, di convogliamento gas combustibili, di fognature civili ed industriali, di irrigazione etc...

APPLICATION:

Water pipeline systems, for gas, civil and industrial sewerage, irrigation etc...

NORME PRODOTTO:

UNI EN ISO 15494
UNI EN 1555-3
UNI EN 12201-3

PRODUCT STANDARS:

UNI EN ISO 15494
UNI EN 1555-3
UNI EN 12201-3

TEMPERATURA DI ESERCIZIO:

da -40 a +60°C

WORKING TEMPERATURE:

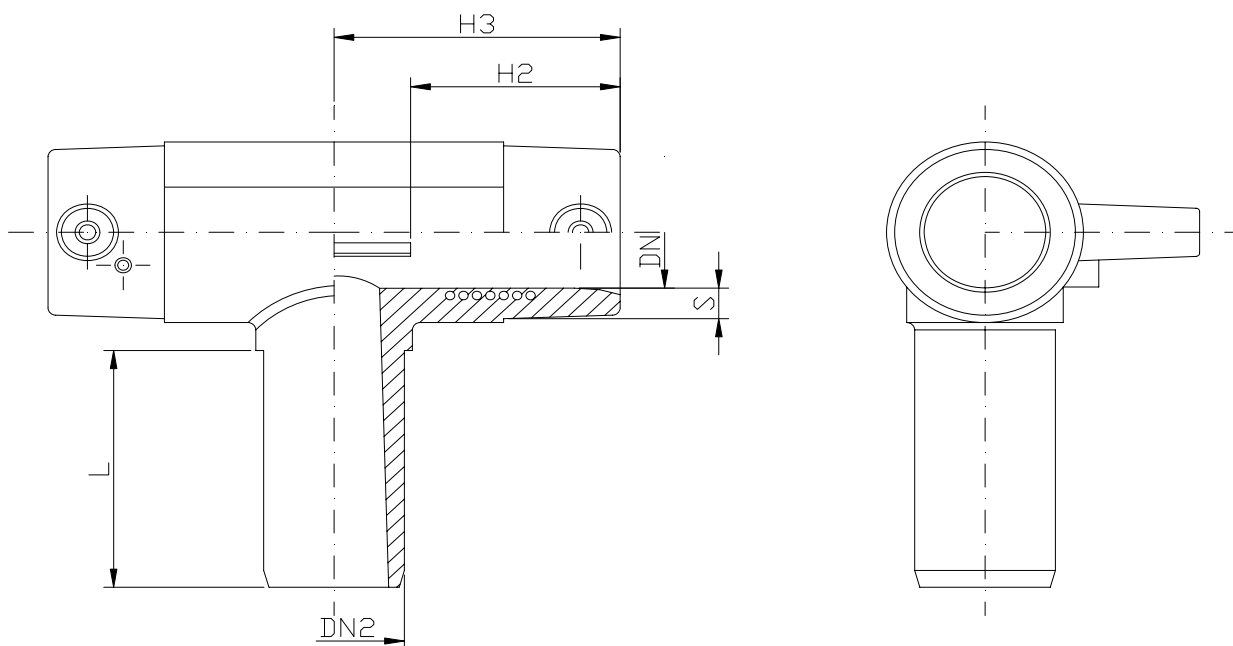
from -40 to +60°C

PRESSIONE DI ESERCIZIO MAX:

Acqua 16 bar
Gas 5 bar

MAX WORKING PRESSURE:

Water 16 bar
Gas 5 bar



DN	25	32	32	40	40	50	50	63	63	63	75	110	110	125	125	125
DN2	20	20	25	25	32	32	40	32	40	50	63	63	90	63	90	110
H2	43	39.5	39.5	37	37	58	58	53	53	52.5	73.5	81.5	81.5	86	86	86
H3	53.5	54	54	53.5	53.5	78	78	78	78	78	112	141	141	153	153	153
S	6.1	6.6	6.6	8.5	8.6	8.9	8.9	9.1	9.1	9	10.1	-	-	-	-	-
L	48.5	47.5	58.5	56.5	69	66.5	62	44.5	59	-	78.5	70	90	70	90	90



Art. 039004

RIDUZIONE ELETTRORISALDABILE, PE 100, SDR 11

ELECTROFUSION REDUCER, PE 100, SDR 11

APPLICAZIONE:

Impianti di acquedottistica, di convogliamento gas combustibili, di fognature civili ed industriali, di irrigazione etc...

APPLICATION:

Water pipeline systems, for gas, civil and industrial sewerage, irrigation etc...

NORME PRODOTTO:

UNI EN ISO 15494
UNI EN 1555-3
UNI EN 12201-3

PRODUCT STANDARS:

UNI EN ISO 15494
UNI EN 1555-3
UNI EN 12201-3

TEMPERATURA DI ESERCIZIO:

da -40 a +60°C

WORKING TEMPERATURE:

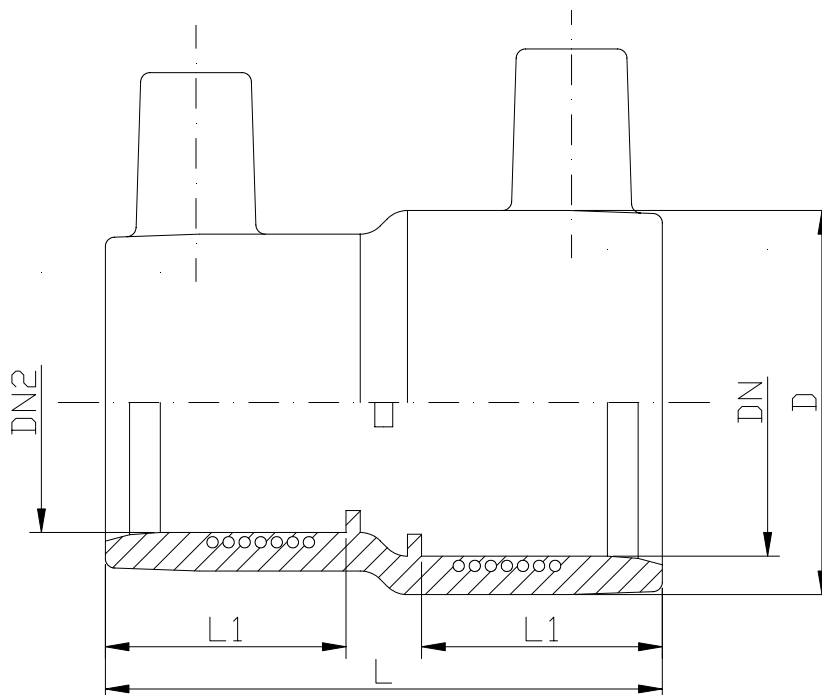
from -40 to +60°C

PRESSIONE DI ESERCIZIO MAX:

Acqua 16 bar
Gas 5 bar

MAX WORKING PRESSURE:

Water 16 bar
Gas 5 bar



DN	25	32	32	40	40	50	50	50	63	63	63	75	90	90	90	110	110	110	125	125	125	160	160	160	200	225
DN2	20	20	25	25	32	25	32	40	32	40	50	63	50	63	75	63	75	90	63	90	110	90	110	125	160	160
D	36	44	44	57	57	67	67	67	81	81	81	100	114	115	114	140	140	140	149	148	152	193	193	193	253	275
L1	41	38	44	43.5	45	38	38	41.5	57	57	56.5	64	72	65	65	84	84	85.5	69.5	74	70	75	75	75	112	115
L2	41	31	39.5	36.5	35	41	41.5	40.5	49	45	49	62	49	59.5	64.5	81	75	81.5	63	68	72	68	72	72	105	105
L	85	74	86	87	86	85	86	87	113	110	111	128	142	128	133	168	162	169	158	156	160	173	178	178	240	240



Art. 038023

COLLARE DI PRESA PER PALLONE OTTURATORE, PE 100

BALLON SADDLES, PE 100

APPLICAZIONE:

Gas

APPLICATION:

Gas

NORME PRODOTTO:

UNI EN ISO 15494
UNI EN 1555-3

PRODUCT STANDARDS:

UNI EN ISO 15494
UNI EN 1555-3

TEMPERATURA DI ESERCIZIO:

da -40 a +60°C

WORKING TEMPERATURE:

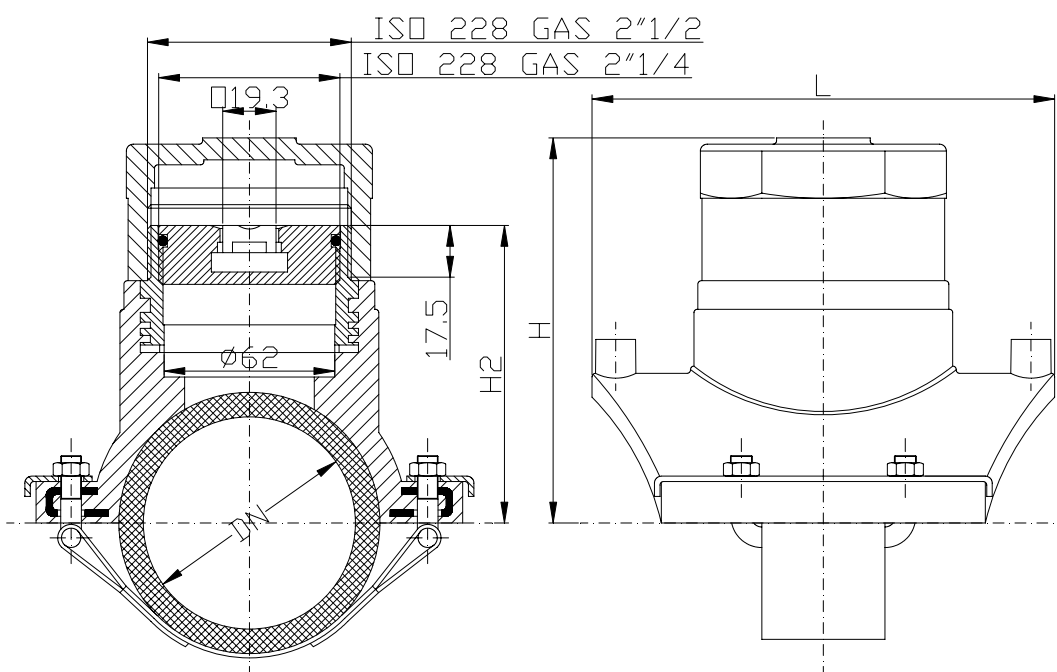
from -40 to +60°C

PRESSIONE DI ESERCIZIO MAX:

Gas 5 bar

MAX WORKING PRESSURE:

Gas 5 bar



Foro di passaggio ottimizzato per palloni antiscivolo specifici per polietilene

Specific hole for antislip ball

DN	90	110	125	140	160	180	200	225	250	280	315
H	138	158	165.5	173	183	193	203	204	216.5	231.5	249
H2	106	126	133.5	141	151	161	171	172	184.5	199.5	217
L	170	170	170	170	170	170	170	200	200	200	200

Art. 038020

COLLARE DI PRESA A TRONCHETTO, PE100, SDR 11
BRANCH SADDLES, PE 100, SDR 11
APPLICAZIONE:

Impianti di acquedottistica, di convogliamento gas combustibili, di fognature civili ed industriali, di irrigazione etc...

APPLICATION:

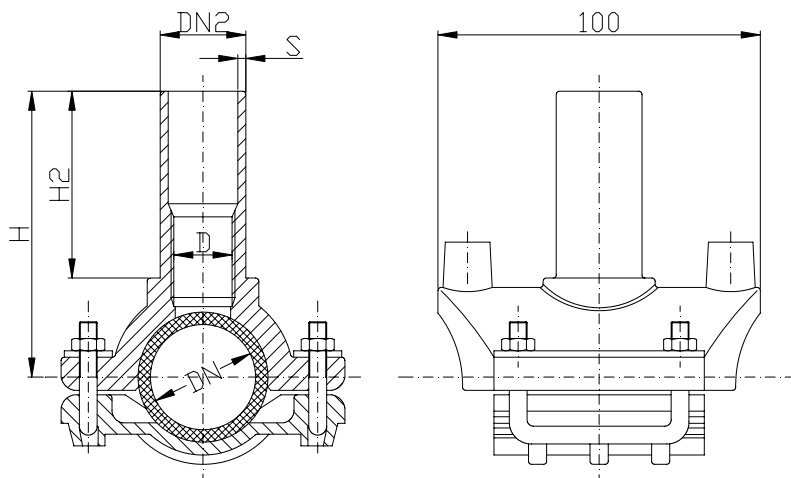
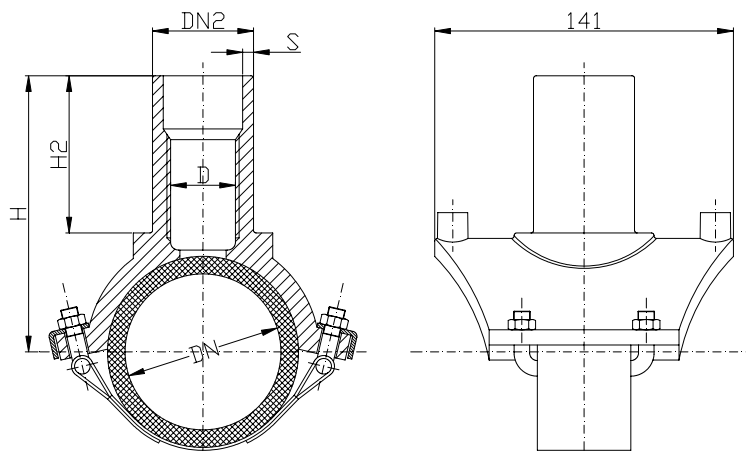
Water pipeline systems, for gas, civil and industrial sewerage, irrigation etc...

NORME PRODOTTO:
 UNI EN ISO 15494
 UNI EN 1555-3
 UNI EN 12201-3
PRODUCT STANDARS:
 UNI EN ISO 15494
 UNI EN 1555-3
 UNI EN 12201-3
TEMPERATURA DI ESERCIZIO:

da -40 a +60°C

WORKING TEMPERATURE:

from -40 to +60°C

PRESSIONE DI ESERCIZIO MAX:
 Acqua 16 bar
 Gas 5 bar
MAX WORKING PRESSURE:
 Water 16 bar
 Gas 5 bar

Dalla misura 40-20 alla 75-40 con fondo staffa rigido; misure superiori con cinghia
From size 40-20 to size 75-40 with plastic underclamp; upper sizes with belt




Art. 038020

DN	DN2	S	H	H2	D
40	20	3	103	65	13
40	25	3	103	65	16
40	32	3	103	65	22.5
50	20	3	108	65	13
50	25	3	108	65	16
50	32	3	108	65	22.5
63	25	3	114.5	65	16
63	32	3	114.5	65	22.5
63	40	3.7	114.5	65	30
63	50	4.6	126.5	65	38
75	32	3	120.5	70	22.5
75	40	3.7	120.5	65	30
75	50	4.6	130	65	38
75	63	5.8	140	90	44
90	32	3	137.5	65	22.5
90	50	4.6	137.5	65	38
90	63	5.8	147.5	90	44
110	32	3	147.5	65	22.5
110	50	4.6	147.5	65	38
110	63	5.8	157.5	90	44
125	32	3	155	65	22.5

DN	DN2	S	H	H2	D
125	50	4.6	155	65	38
125	63	5.8	165	90	44
140	32	3	162.5	65	22.5
140	50	4.6	162.5	65	38
140	63	5.8	172.5	90	44
160	32	3	172.5	65	22.5
160	50	4.6	172.5	65	38
160	63	5.8	182.5	90	44
180	32	3	182.5	65	22.5
180	50	4.6	182.5	65	38
180	63	5.8	192.5	90	44
200	32	3	192.5	65	22.5
200	50	4.6	192.5	65	38
200	63	5.8	202.5	90	44
225	32	3	205	65	22.5
225	63	5.8	215	90	44
250	32	3	217.5	65	22.5
250	63	5.8	227.5	90	44
315	32	3	250	65	22.5
315	63	5.8	260	90	44

COLLARE DI PRESA IN CARICO, PE100, SDR 11

TAPPING TEES, PE 100, SDR 11

APPLICAZIONE:

Impianti di acquedottistica, di convogliamento gas combustibili, di fognature civili ed industriali, di irrigazione etc...

APPLICATION:

Water pipeline systems, for gas, civil and industrial sewerage, irrigation etc...

NORME PRODOTTO:

UNI EN ISO 15494
UNI EN 1555-3
UNI EN 12201-3

PRODUCT STANDARS:

UNI EN ISO 15494
UNI EN 1555-3
UNI EN 12201-3

TEMPERATURA DI ESERCIZIO:

da -40 a +60°C

WORKING TEMPERATURE:

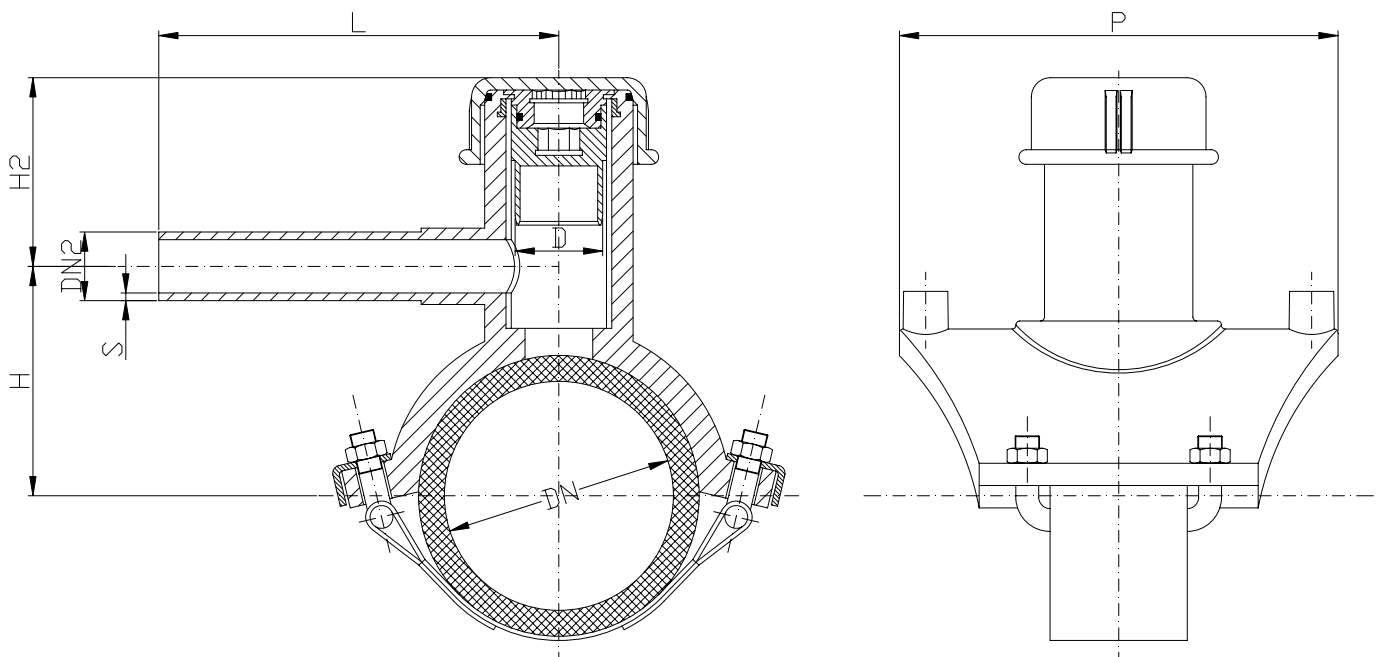
from -40 to +60°C

PRESSIONE DI ESERCIZIO MAX:

Acqua 16 bar
Gas 5 bar

MAX WORKING PRESSURE:

Water 16 bar
Gas 5 bar





Art. 038021

DN	DN2	S	H	H2	L	P	D
40	20	3	44	66	100	100	19.5
40	25	3	44	66	100	100	19.5
40	32	3	44	66	100	100	19.5
50	20	3	49	66	100	100	19.5
50	25	3	49	66	100	100	19.5
50	32	3	49	66	100	100	19.5
63	25	3	55.5	66	100	100	19.5
63	32	3	55.5	66	100	100	19.5
63	40	3.7	55.5	66	100	100	19.5
63	50	4.6	60	115	100	132	19.5
75	32	3	61.5	66	100	100	19.5
75	40	3.7	67.5	94	105	116	24
75	50	4.6	102.5	112	141	150	44
75	63	5.8	102.5	112	178	150	44
90	32	3	65	77	100	100	19.5
90	50	4.6	104	150	136	150	44
90	63	5.8	104	150	136	150	44
110	32	3	75	77	100	100	19.5
110	50	4.6	114	150	136	150	44
110	63	5.8	114	150	136	150	44
125	32	3	82.5	77	100	100	19.5

DN	DN2	S	H	H2	L	P	D
125	50	4.6	121.5	150	136	150	44
125	63	5.8	121.5	150	136	150	44
140	32	3	100	94	105	116	24
140	50	4.6	129	150	136	150	44
140	63	5.8	129	150	136	150	44
160	32	3	103	84	100	100	19.5
160	50	4.6	139	150	136	150	44
160	63	5.8	139	150	136	150	44
180	32	3	113	84	100	100	19.5
180	50	4.6	149	150	136	150	44
180	63	5.8	149	150	136	150	44
200	32	3	130	94	105	116	24
200	50	4.6	159	150	136	150	44
200	63	5.8	159	150	136	150	44
225	32	3	150	94	105	150	24
225	63	5.8	171.5	150	136	150	44
250	32	3	162.5	94	105	150	24
250	63	5.8	184	150	136	150	44
315	32	3	195	94	105	150	24
315	63	5.8	216.5	150	136	150	44