

TILTING TYPE CHECK VALVE

T.i.S. Service

PN 10 - Art. D150

PN 16 - Art. D151

PN 25 - Art. D155

VALVOLA DI RITEGNO CON LEVA E CONTRAPPESO PN10/16/25

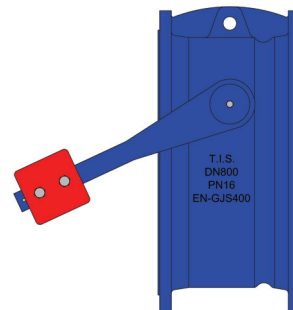
TILTING TYPE CHECK VALVE PN10/16/25

APPLICAZIONE:

Stazioni di pompaggio, imp. di trattamento e desalinizzazione, bacini idrici, applicaz. industriali.

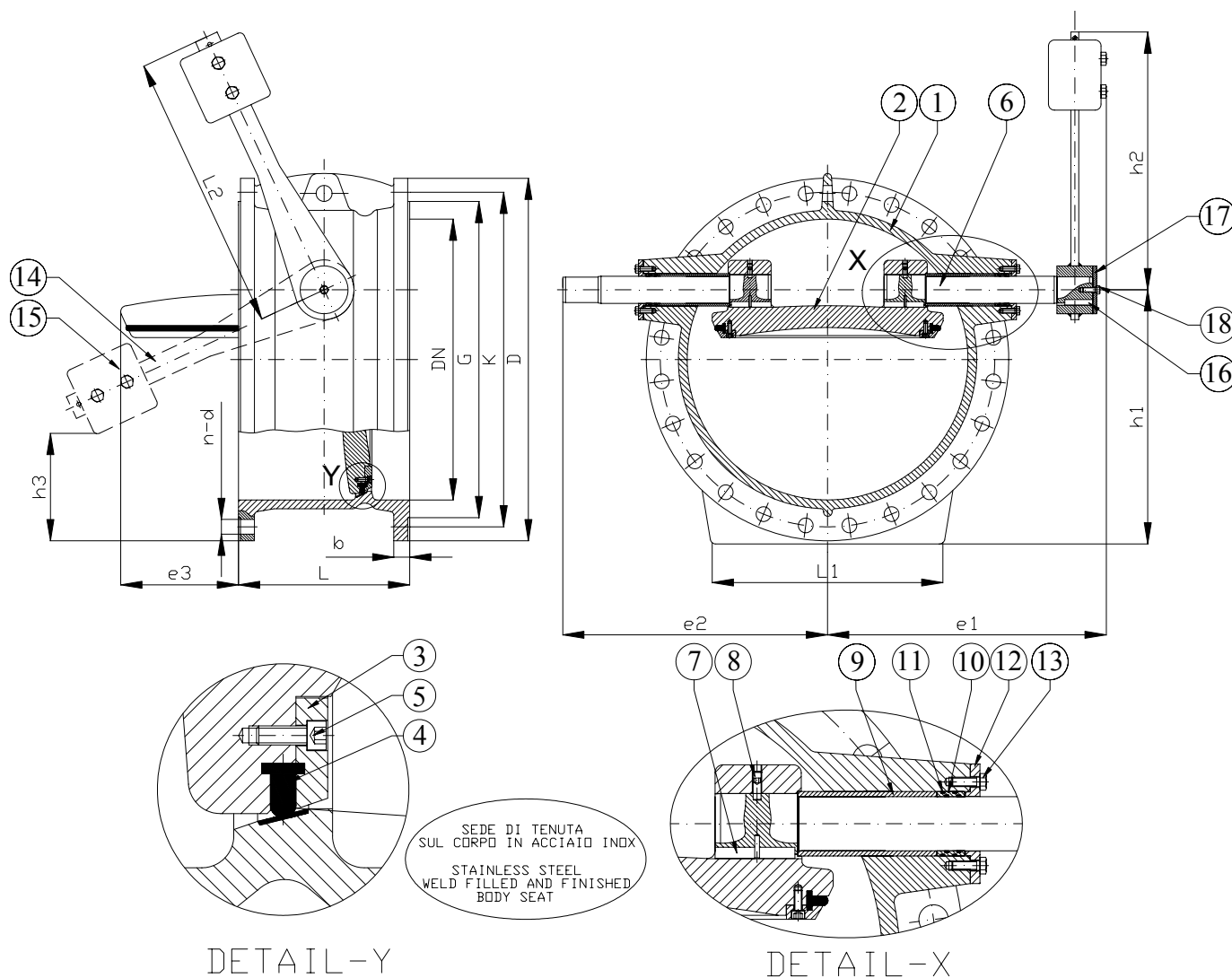
APPLICATION:

Pumping stations, treatment plants, reservoirs, desalination plants, industrial applications.

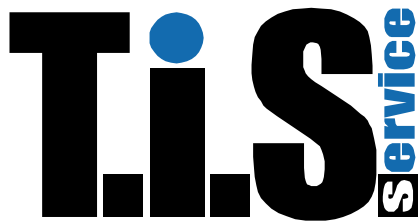


NORMA PROGETTO: EN 593
SCARTAMENTO: EN 558-1 Serie 14
FLANGE: EN 1092-2
COLLAUDI: EN 12266
TEMP. ESERCIZIO: Min -15°C/Max+80°C

DESIGN STANDARD: EN 593
FACE TO FACE: EN 558-1 Serie 14
FLANGES: EN 1092-2
TESTS: EN 12266
WORKING TEMP.: Min -15°C/Max+80°C



TILTING CHECK VALVE



PN 10 - Art. D150

PN 16 - Art. D151

PN 25 - Art. D155

DENOMINAZIONE - PART	MATERIALI - MATERIALS
1 CORPO - BODY	GHISA SFEROIDALE GJS 400 - DUCTILE IRON GJS 400
2 DISCO - DISC	GHISA SFEROIDALE GJS 400 - DUCTILE IRON GJS 400
3 ANELLO PREMI GUARNIZIONE - RETAINING RING	ACCIAIO ST37 - STEEL ST37
4 ANELLO DI TENUTA - SEALING RING	EPDM - EPDM
5 VITE - SCREW	ACCIAIO INOX A2 - STAINLESS STEEL A2
6 ALBERO - SHAFT	ACCIAIO INOX AISI 420 - STAINLESS STEEL AISI 420
7 CHIAVETTA - KEY	ACCIAIO - STEEL
8 BULLONE - BOLT	ACCIAIO INOX A2 - STAINLESS STEEL A2
9 BOCCOLA - BEARING BUSH	OTTONE - BRASS
10 BOCCOLA DI TENUTA - SEAL BUSH	DELFIN - DELFIN
11 O-RING - O-RING	NBR - NBR
12 COPERCHIO - COVER (DRIVEN END)	GHISA SFEROIDALE GJS 400 - DUCTILE IRON GJS 400
13 BULLONE - BOLT	ACCIAIO INOX A2 - STAINLESS STEEL A2
14 LEVA - LEVER	ACCIAIO ST37 - STEEL ST37
15 CONTRAPPESO - WEIGHT	GHISA GRIGIA GJL 250 - CAST IRON GJL 250
16 CHIAVETTA - KEY	ACCIAIO - STEEL
17 COPERCHIO - COVER (DRIVEN END)	GHISA SFEROIDALE GJS 400 - DUCTILE IRON GJS 400
18 BULLONE - BOLT	ACCIAIO INOX A2 - STAINLESS STEEL A2

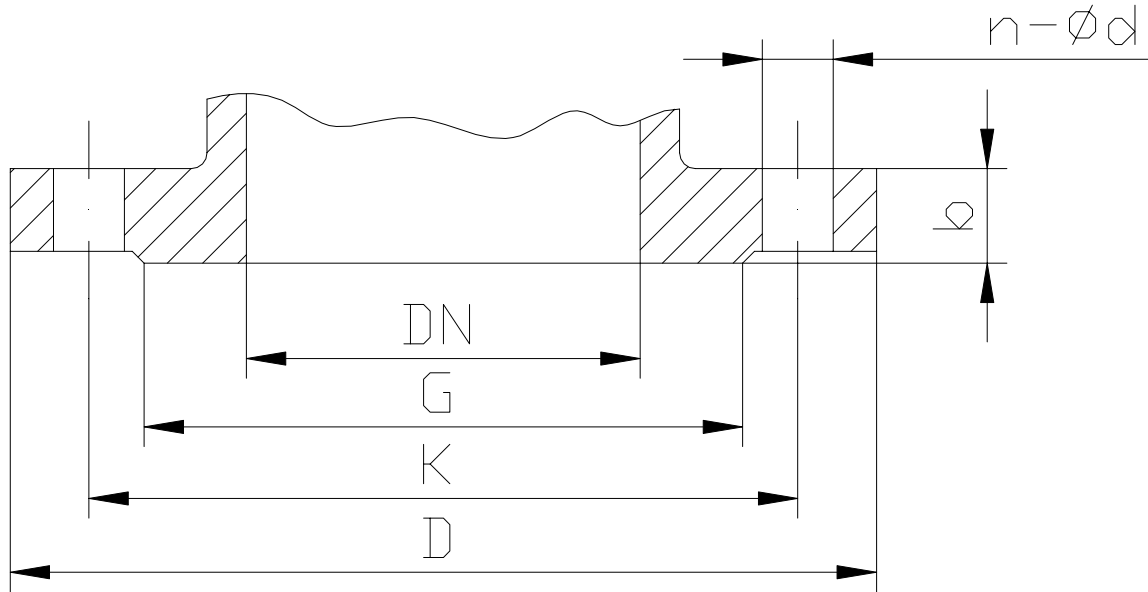
RIVESTIMENTO ESTERNO/INTERNO: Polvere epossidica di colore BLU RAL 5005 con spessore min 250µm.

SURFACE PROTECTION: FBE coating process with epoxy resin powder of sky blue color RAL 5005 and minimum thickness of 250µm.

DN	PN	L	L1	L2	e1	e2	e3	h1	h2	h3	W (kg)
100	16	190	-	200	200	184	-	135	188	25	20
125	16	200	-	200	223	207	-	156	188	46	26
150	16	210	-	200	245	230	9	180	188	58	35
200	16	230	-	200	268	252	35	220	188	99	43
200	25	230	-	200	268	252	35	230	188	109	48
250	16	250	-	300	331	305	68	265	280	96	73
250	25	250	280	300	338	317	68	285	280	116	94
300	16	270	315	300	343	317	87	305	280	136	96
300	25	270	315	400	395	362	88	328	372	115	126
350	16	290	250	400	415	382	117	357	372	142	136
350	25	290	250	400	438	410	117	375	372	160	175
400	16	310	370	400	445	412	138	400	372	185	168
400	25	310	370	400	485	460	138	420	372	195	287
450	16	330	425	450	470	443	165	442	418	206	237
450	25	330	425	500	513	488	165	457	463	221	298
500	16	350	460	500	522	490	188	492	465	224	294
500	25	350	460	500	573	554	191	500	465	232	376
600	16	390	535	600	594	567	238	570	555	270	423
600	25	390	535	600	627	610	238	582	555	272	512
700	16	430	585	700	706	661	304	640	650	277	550
700	25	430	610	700	715	698	298	665	647	304	710
800	16	470	655	800	746	711	354	720	736	317	820
900	16	510	680	900	805	780	400	797	830	348	1060
1000	16	550	690	1000	875	863	460	887	923	390	1245
1200	16	630	810	1200	960	938	568	1055	1110	448	1810
1400	16	710	900	1400	1240	1210	682	1210	1295	502	3420

DIMENSIONE DELLE FLANGE

FLANGE DIMENSIONS



DN	PN10					PN16					PN25					PN40				
	G	K	D	b	n-Ød	G	K	D	b	n-Ød	G	K	D	b	n-Ød	G	K	D	b	n-Ød
100	156	180	220	19	8-19	156	180	220	19	8-19	156	190	235	19	8-23	156	190	235	19	8-19
125	184	210	250	19	8-19	184	210	250	19	8-19	184	220	270	19	8-28	184	220	270	23.5	8-28
150	211	240	285	19	8-23	211	240	285	19	8-23	211	250	300	20	8-28	211	250	300	26	8-28
200	266	295	340	20	8-23	266	295	340	20	12-23	274	310	360	22	12-28	284	320	375	30	12-31
250	319	350	405	22	12-23	319	355	405	22	12-28	330	370	450	24.5	12-31	345	385	450	34.5	12-34
300	370	400	460	24.5	12-23	370	410	460	24.5	12-28	389	430	485	27.5	16-31	409	450	515	39.5	16-34
350	429	460	505	24.5	16-23	429	470	520	26.5	16-28	448	490	555	30	16-34	465	510	580	44	16-37
400	480	515	565	24.5	16-28	480	525	580	28	16-31	503	550	620	32	16-37	535	585	660	48	16-41
450	530	565	640	30	20-28	548	585	640	30	20-31	548	600	670	34.5	20-37	560	610	685	49	20-41
500	582	620	670	26.5	20-28	609	650	715	31.5	20-34	609	660	730	36.5	20-37	615	670	755	52	20-44
600	682	725	780	30	20-31	720	770	840	36	20-37	720	770	845	42	20-41	735	795	890	58	20-50
700	794	840	895	32.5	24-31	794	840	910	39.5	24-37	820	875	960	46.5	24-44	840	900	995	64	24-48
800	901	950	1015	35	24-34	901	950	1025	43	24-41	928	990	1085	51	24-50	964	1030	1140	-	24-56
900	1001	1050	1115	37.5	28-34	1001	1050	1125	46.5	28-41	1028	1090	1185	55.5	28-50	1075	1140	1250	-	28-56
1000	1112	1160	1230	40	28-37	1112	1170	1255	50	28-44	1140	1210	1320	60	28-57	1185	1250	1360	-	28-56
1100	1218	1270	1355	53.5	32-37	1218	1270	1355	53.5	32-44	1240	1310	1420	64.5	32-57	-	-	-	-	-
1200	1328	1380	1455	45	32-41	1328	1390	1485	57	32-50	1350	1420	1530	69	32-57	1385	1460	1575	-	32-62
1300	1440	1490	1585	59	32-42	1432	1490	1585	59	32-48	-	-	-	-	-	-	-	-	-	-
1400	1530	1590	1675	46	36-44	1530	1590	1685	60	36-50	1560	1640	1755	74	36-62	1605	1680	1795	-	36-62
1500	1640	1700	1820	62.5	36-44	1640	1710	1820	62.5	36-57	-	-	-	-	-	-	-	-	-	-
1600	1750	1820	1915	49	40-50	1750	1820	1930	65	40-57	1780	1860	1975	81	40-62	1815	1900	2025	-	40-70
1800	1950	2020	2130	70	44-50	1950	2020	2130	70	44-57	1985	2070	2195	88	44-70	-	-	-	-	-
2000	2150	2230	2345	75	48-50	2150	2230	2345	75	48-62	2210	2300	2425	95	48-70	-	-	-	-	-
2200	2370	2440	2550	65	52-57	2360	2440	2555	80	52-62	-	-	-	-	-	-	-	-	-	-
2400	2570	2650	2760	65	56-56	-	-	-	-	-	-	-	-	-	-	-	-	-	-	-
2500	2670	2750	2860	65	56-56	-	-	-	-	-	-	-	-	-	-	-	-	-	-	-