

PN 10 - Art. C068 TIS

PN 16 - Art. C067 TIS

## VALVOLA DI RITEGNO A PALLA FLANGIATA PN10/16

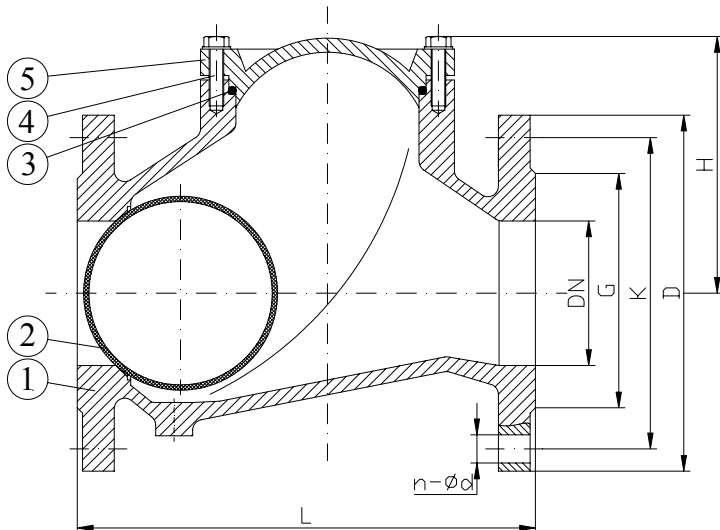
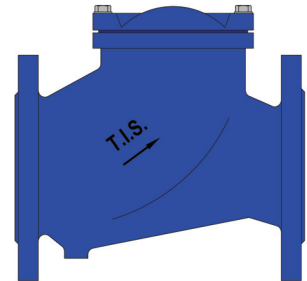
## FLANGED BALL CHECK VALVE PN10/16

## APPLICAZIONE:

Sistemi di pompaggio per acqua, liquidi viscosi, densi ed aggressivi.

## APPLICATION:

Pumping station for clean and sewage water or viscous fluids.



**NORMA PROGETTO:** EN 1074-3  
**SCARTAMENTO:** EN 558-1 Serie 48  
**FLANGE:** EN 1092-2  
**COLLAUDI:** EN 12266  
**TEMP. ESERCIZIO:** Min -10°C /Max + 80°C  
**PRESSIONE ESERCIZIO:** Min 0,3/0,5 bar

**DESIGN STANDARD:** EN 1074-3  
**FACE TO FACE:** EN 558-1 Serie 48  
**FLANGES:** EN 1092-2  
**TESTS:** EN 12266  
**WORKING TEMP.:** Min -10°C /Max + 80°C  
**WORKING PRESSURE:** Min 0,3/0,5 bar

DENOMINAZIONE MATERIALI  
PART MATERIALS

DENOMINAZIONE PART	MATERIALI MATERIALS
1 CORPO BODY	GJS 400 GJS 400
2 PALLA BALL	ALLUMINIO+NBR (DN50-150) ACCIAIO+NBR (DN200-300) GJS400+NBR (DN350-400) POLIURETANO (DN500) ALUMINIUM+NBR (DN50-150) STEEL+NBR (DN200-300) GJS400+NBR (DN350-400) POLYURETHANE (DN500)
3 COPERCHIO BONNET	GJS 400 GJS 400
4 VITE BOLT	ACCIAIO INOX STAINLESS STEEL
5 GUARNIZIONE GASKET	NBR NBR

DN	G	K		D		n-ød		L	H	W (kg)
		PN10	PN16	PN10	PN16	PN10	PN16			
50	98	125	125	165	165	4-19	4-19	200	106	7.7
65	118	145	145	185	185	4-19	4-19	240	129	11.2
80	132	160	160	200	200	4-19	8-19	260	146	15.4
100	156	180	180	220	220	8-19	8-19	300	194	22
125	184	210	210	250	250	8-19	8-19	350	207	33
150	211	240	240	285	285	8-23	8-23	400	240	45
200	260	295	295	340	340	8-23	12-23	500	322	90
250	319	350	355	395	405	12-23	12-28	600	388	163
300	370	400	410	445	460	12-23	12-28	700	458	230
350	429	460	470	505	520	16-23	16-28	800	580	290
400	480	515	525	565	580	16-28	16-31	900	730	450
500	582	620	650	670	715	20-28	20-34	1100	900	760

**RIVESTIMENTO ESTERNO/INTERNO:** Polvere epossidica di colore blu RAL 5005 con spessore min 200µm.  
**SURFACE PROTECTION:** FBE coating process with epoxy resin powder of sky blue color RAL 5005 and minimum thickness of 200µm.

## VALVOLA DI RITEGNO A PALLA FILETTATA PN16

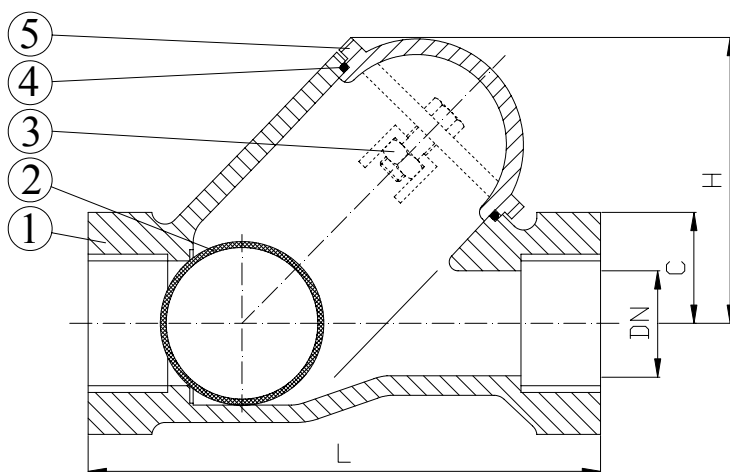
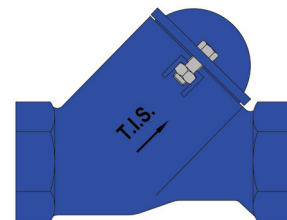
## THREADED BALL CHECK VALVE PN16

## APPLICAZIONE:

Sistemi di pompaggio per acqua, liquidi viscosi, densi ed aggressivi.

## APPLICATION:

Pumping station for clean and sewage water or viscous fluids.



## ESTREMITA' FILETTATE F/F GAS STANDARD

**NORMA PROGETTO:** EN 1074-3  
**TEMP. ESERCIZIO:** Min -10°C /Max + 80°C  
**PRESSIONE ESERCIZIO:** Min 0,3/0,5 bar

## GAS STANDARD THREADED ENDS

**DESIGN STANDARD:** EN 1074-3  
**WORKING TEMP.:** Min -10°C /Max + 80°C  
**WORKING PRESSURE:** Min 0,3/0,5 bar

DENOMINAZIONE PART	MATERIALI MATERIALS
1 <b>CORPO</b> <b>BODY</b>	GJS 400 GJS 400
2 <b>PALLA</b> <b>BALL</b>	ALLUMINIO + NBR ALUMINIUM + NBR
3 <b>COPERCHIO</b> <b>BONNET</b>	GJS 400 GJS 400
4 <b>VITE</b> <b>BOLT</b>	ACCIAIO INOX STAINLESS STEEL
5 <b>GUARNIZIONE</b> <b>GASKET</b>	GOMMA NBR NBR RUBBER

Dim (Inch)	DN	L	H	C	W (kg)
1	25	125	78	47	1.3
1 1/4	32	132	81	59	1.7
1 1/2	40	145	97	68	2.6
2	50	174	118	82	4.2
2 1/2	65	200	128	104	5.5
3	80	243	160	146	10

**RIVESTIMENTO ESTERNO/INTERNO:** Polvere epossidica di colore blu RAL 5005 con spessore min 200µm.

**SURFACE PROTECTION:** FBE coating process with epoxy resin powder of sky blue color RAL 5005 and minimum thickness of 200µm.