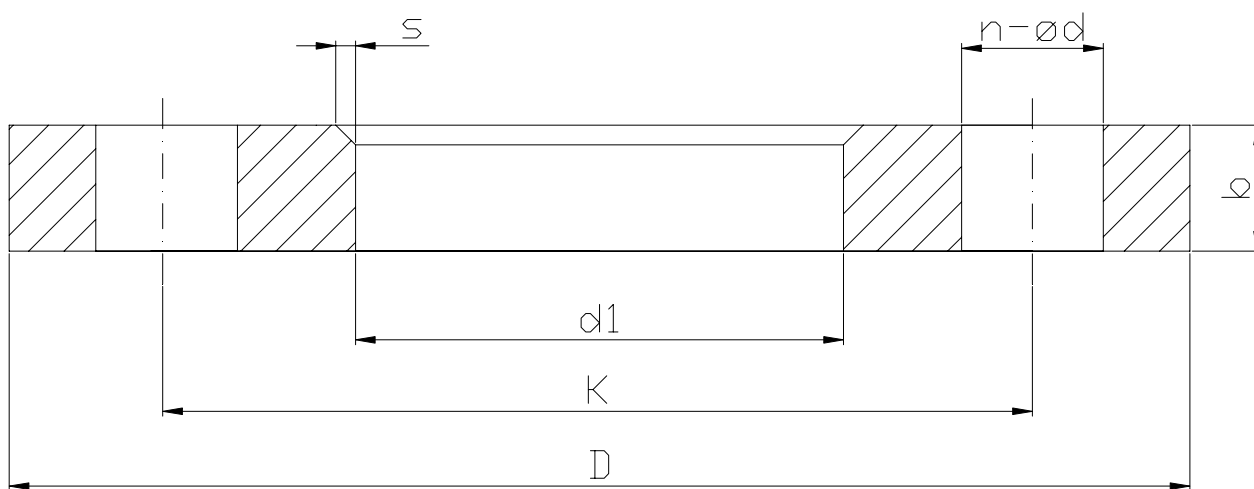


FLANGIA PER COLLARE PN10

FLANGE PN10

NORME PRODOTTO: EN 1092-1-4
MATERIALI: Acciaio al carbonio

PRODUCT STANDARDS: EN 1092-1-4
MATERIALS: Carbon steel



DN TUBO PE PE PIPE	DN	d1	K	D	n - ød	b	VITE SCREW	s	PESO kg WEIGHT
20	15	25	65	95	4 -14	14	M12	3	0,5
25	20	31	75	105	4 -14	16	M12	4	1,0
32	25	38	85	115	4 -14	16	M12	4	1,0
40	32	47	100	140	4 -18	18	M16	5	2,0
50	40	53	110	150	4 -18	18	M16	5	2,0
63	50	65	125	165	4 -18	19	M16	5	2,5
75	65	81	145	185	8 -18	20	M16	6	3,5
90	80	94	160	200	8 -18	20	M16	6	4,0
110	100	113	180	220	8 -18	22	M16	6	6,0
125	100	120	180	220	8 -18	18	M16	6	-
140	125	145	210	250	8 -18	22	M16	6	8,0
160	150	164	240	285	8 -22	24	M20	6	10,0
180	150	174	240	285	8 -22	18	M20	6	-
200	200	218	295	340	8 -22	24	M20	6	9,0
225	200	225	295	340	8 -22	24	M20	6	-
250	250	273	350	395	12 -22	22	M20	8	11,5
280	250	280	350	395	12 -22	22	M20	8	-
315	300	333	400	445	12 -22	26	M20	8	13,0