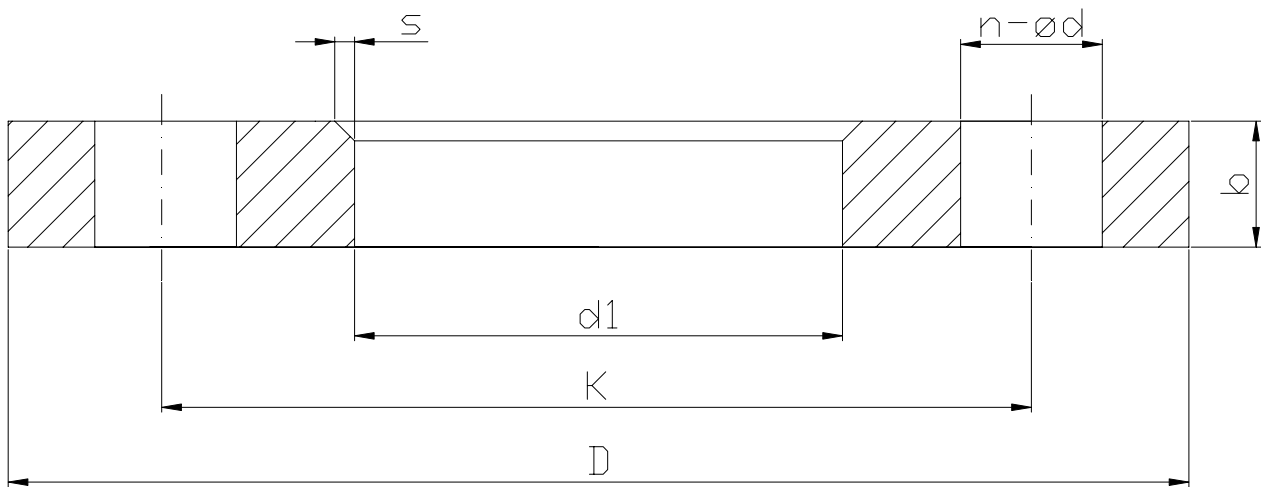


## FLANGIA PER COLLARE PN10

## FLANGE PN10

**NORME PRODOTTO:** EN 1092-1-4  
**MATERIALI:** Acciaio al carbonio

**PRODUCT STANDARDS:** EN 1092-1-4  
**MATERIALS:** Carbon steel



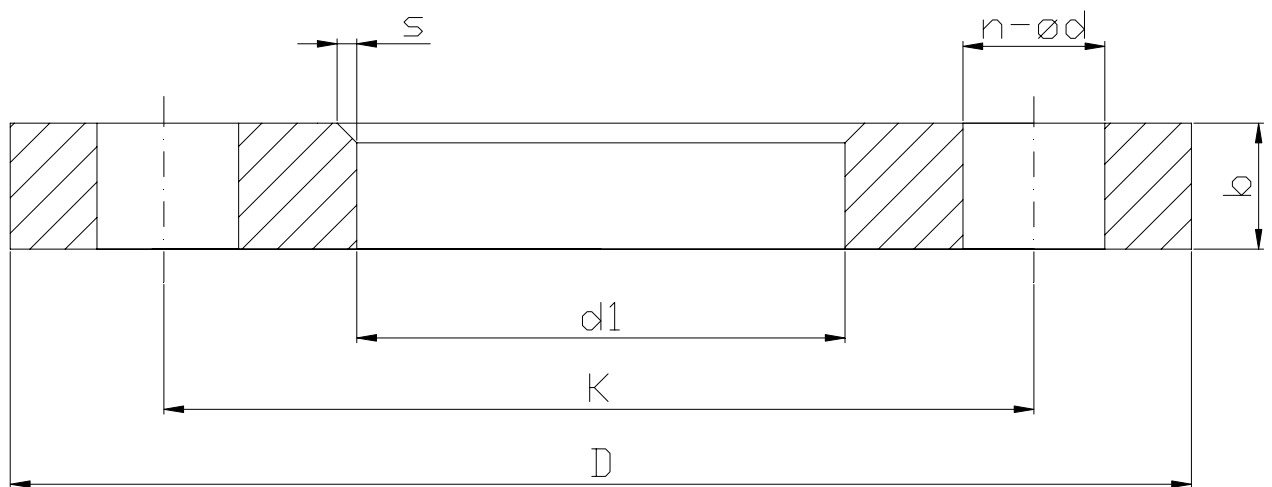
DN TUBO PE PE PIPE	DN	d1	K	D	n - ød	b	VITE SCREW	s	PESO kg WEIGHT
20	15	25	65	95	4 -14	14	M12	3	0,5
25	20	31	75	105	4 -14	16	M12	4	1,0
32	25	38	85	115	4 -14	16	M12	4	1,0
40	32	47	100	140	4 -18	18	M16	5	2,0
50	40	53	110	150	4 -18	18	M16	5	2,0
63	50	65	125	165	4 -18	19	M16	5	2,5
75	65	81	145	185	8 -18	20	M16	6	3,5
90	80	94	160	200	8 -18	20	M16	6	4,0
110	100	113	180	220	8 -18	22	M16	6	6,0
125	100	120	180	220	8 -18	18	M16	6	-
140	125	145	210	250	8 -18	22	M16	6	8,0
160	150	164	240	285	8 -22	24	M20	6	10,0
180	150	174	240	285	8 -22	18	M20	6	-
200	200	218	295	340	8 -22	24	M20	6	9,0
225	200	225	295	340	8 -22	24	M20	6	-
250	250	273	350	395	12 -22	22	M20	8	11,5
280	250	280	350	395	12 -22	22	M20	8	-
315	300	333	400	445	12 -22	26	M20	8	13,0

## FLANGIA PER COLLARE PN16

## FLANGE PN16

**NORME PRODOTTO:** EN 1092-1-4  
**MATERIALI:** Acciaio al carbonio

**PRODUCT STANDARDS:** EN 1092-1-4  
**MATERIALS:** Carbon steel

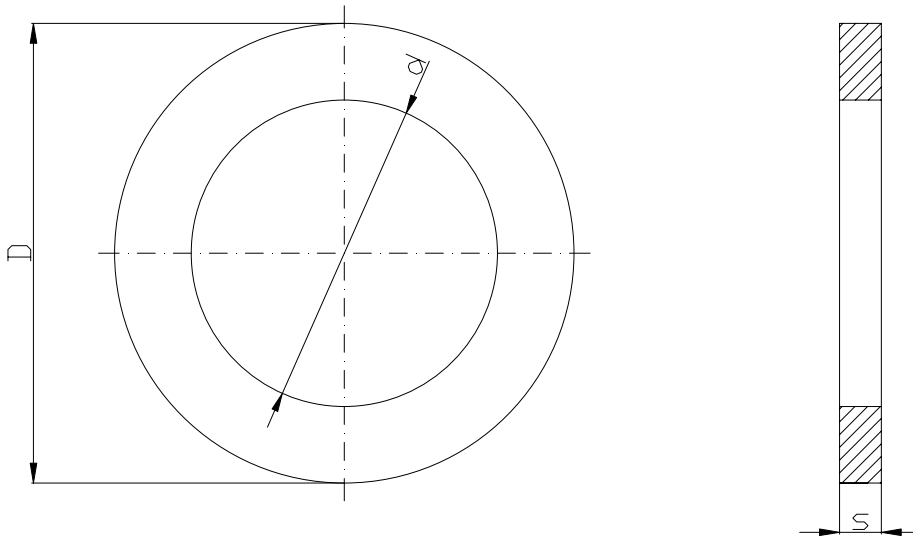


DN TUBO PE PE PIPE	DN	d1	K	D	n - ød	b	VITE SCREW	s	PESO kg WEIGHT
20	15	25	65	95	4 - 14	14	M12	3	0,5
25	20	31	75	105	4 - 14	16	M12	4	1,0
32	25	38	85	115	4 - 14	16	M12	4	1,0
40	32	47	100	140	4 - 18	18	M16	5	2,0
50	40	53	110	150	4 - 18	18	M16	5	2,0
63	50	65	125	165	4 - 18	19	M16	5	2,5
75	65	81	145	185	8 - 18	20	M16	6	3,5
90	80	94	160	200	8 - 18	20	M16	6	4,0
110	100	113	180	220	8 - 18	22	M16	6	6,0
125	100	120	180	220	8 - 18	18	M16	6	-
140	125	145	210	250	8 - 18	22	M16	6	8,0
160	150	164	240	285	8 - 22	24	M20	6	10,0
180	150	174	240	285	8 - 22	18	M20	6	-
200	200	218	295	340	12 - 25	20	M20	6	17,5
225	200	225	295	340	12 - 25	20	M20	6	-
250	250	273	355	405	12 - 25	24	M22	8	28,5
280	250	280	355	405	12 - 25	24	M22	8	-
315	300	333	410	460	12 - 26	32	M24	8	40,5

Art. 050012

## GUARNIZIONI IN GOMMA

## RUBBER GASKETS



DN	D x d	s
15	50 x 20	3
20	60 x 25	3
25	70 x 30	3
32	82 x 38	3
40	92 x 45	3
50	108 x 57	3
65	127 x 76	3
80	142 x 89	3
100	162 x 108	3
125	192 x 140	3
150	218 x 169	3
200	273 x 218	3
250	330 x 273	3
300	385 x 318	3

<b>MATERIALE</b> <b>MATERIALS</b>	GOMMA SBR SBR RUBBER
--------------------------------------	-------------------------

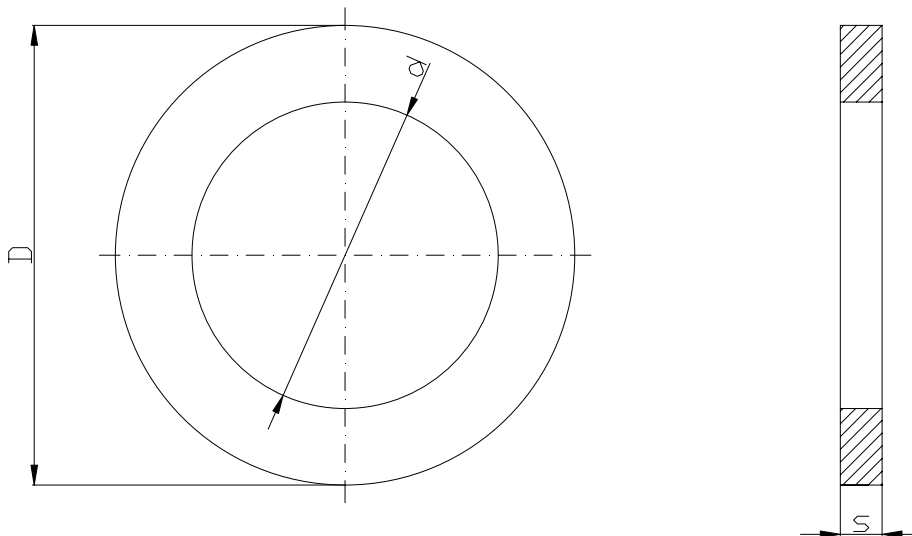
<b>COLORE</b> <b>COLOR</b>	NERO BLACK
-------------------------------	---------------

<b>TEMP. MAX.</b> <b>TEMP. MAX.</b>	70°C 70°C
--	--------------

<b>PRESSIONE MAX.</b> <b>MAX. PRESSURE</b>	16 bar 16 bar
---	------------------

**GUARNIZIONI IN FIBRA**

**FIBRE GASKETS**



DN	D x d	s
15	50 x 20	2
20	60 x 25	2
25	70 x 30	2
32	82 x 38	2
40	92 x 45	2
50	108 x 57	2
65	127 x 76	2
80	142 x 89	2
100	162 x 108	2
125	192 x 140	2
150	218 x 169	2
200	273 x 218	2
250	330 x 273	2
300	385 x 318	2

<b>MATERIALE</b> <i>MATERIALS</i>	FIBRE ARAMIDICHE ESENTE AMIANTO ARAMID FIBRES EXEMPT FROM ASBESTOS
<b>COLORE</b> <i>COLOR</i>	VERDE GREEN
<b>TEMP .MAX.</b> <i>TEMP. MAX.</i>	180°C 180°C
<b>PRESSIONE MAX.</b> <i>MAX. PRESSURE</i>	30 bar 30 bar