

FLANGIA CIECA, PN10

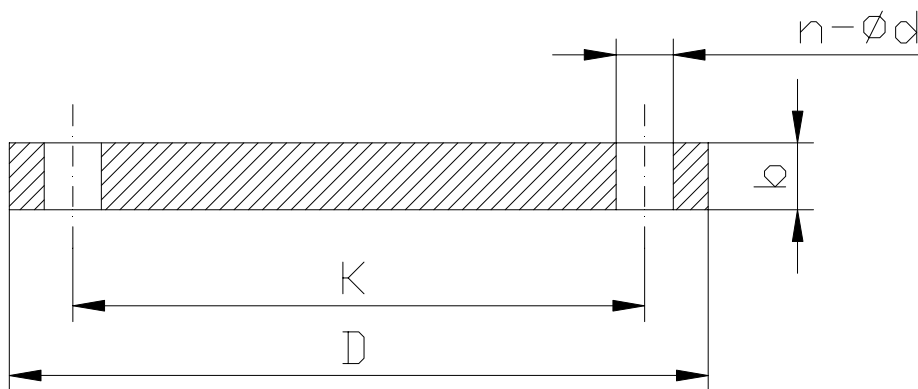
BLIND FLANGE, PN10

NORME PRODOTTO:
MATERIALI:

EN 1092-1-5
Acciaio al carbonio

PRODUCT STANDARDS:
MATERIALS:

EN 1092-1-5
Carbon steel



DN	K	D	n-ød	b	VITE SCREW	PESO kg WEIGHT
15	65	95	4-14	16	M12	0.71
20	75	105	4-14	18	M12	1.01
25	85	115	4-14	18	M12	1.22
32	100	140	4-18	18	M16	1.80
40	110	150	4-18	18	M16	2.09
50	125	165	4-18	18	M16	2.87
65	145	185	8-18	18	M16	3.65
80	160	200	8-18	20	M16	4.61
100	180	220	8-18	20	M16	5.65
125	210	250	8-18	22	M16	8.12
150	240	285	8-22	22	M20	10.5
200	295	340	8-22	24	M20	16.5
250	350	395	12-22	26	M20	24.1
300	400	445	12-22	26	M20	30.8
350	460	505	16-22	26	M20	39.6
400	515	565	16-26	26	M24	49.6
450	565	615	20-26	28	M24	63.0
500	620	670	20-26	28	M24	73.3
600	725	780	20-30	34	M27	124.0
700	840	895	24-30	38	M27	182.5
800	950	1015	24-33	48	M30	312.0
900	1050	1115	28-33	50	M30	409.0
1000	1160	1230	28-36	54	M33	580.5

FLANGIA CIECA, PN16

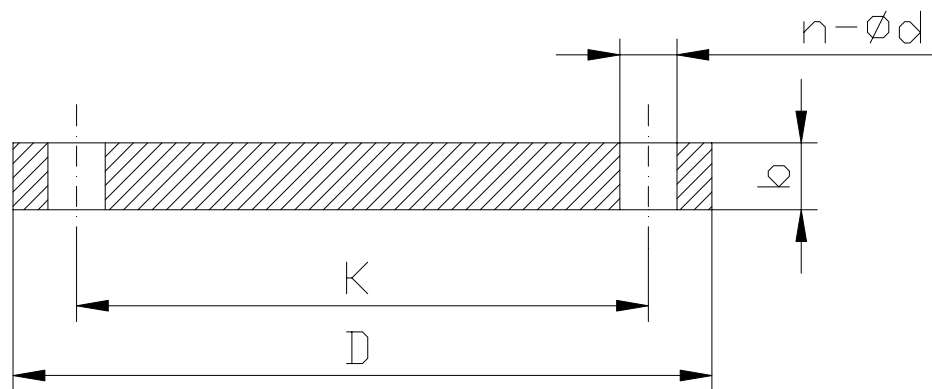
BLIND FLANGE, PN16

NORME PRODOTTO:
MATERIALI:

EN 1092-1-5
Acciaio al carbonio

PRODUCT STANDARDS:
MATERIALS:

EN 1092-1-5
Carbon steel



DN	K	D	n-ød	b	VITE SCREW	PESO kg WEIGHT
15	65	95	4-14	16	M12	0.71
20	75	105	4-14	18	M12	1.01
25	85	115	4-14	18	M12	1.22
32	100	140	4-18	18	M16	1.80
40	110	150	4-18	18	M16	2.09
50	125	165	4-18	18	M16	2.87
65	145	185	8-18	18	M16	3.65
80	160	200	8-18	20	M16	4.61
100	180	220	8-18	20	M16	5.65
125	210	250	8-18	22	M16	8.12
150	240	285	8-22	22	M20	10.5
200	295	340	12-22	24	M20	16.5
250	355	405	12-26	26	M24	25.1
300	410	460	12-26	28	M24	35.2
350	470	520	16-26	30	M24	48.2
400	525	580	16-30	32	M27	63.5
450	585	640	20-30	40	M27	96.5
500	650	715	20-33	44	M30	133.0
600	770	840	20-36	54	M33	226.5
700	840	910	24-36	58	M33	298.0
800	950	1025	24-39	62	M36	438.0
900	1050	1125	28-39	64	M36	560.5
1000	1170	1255	28-42	68	M39	818.0

FLANGIA CIECA, PN25

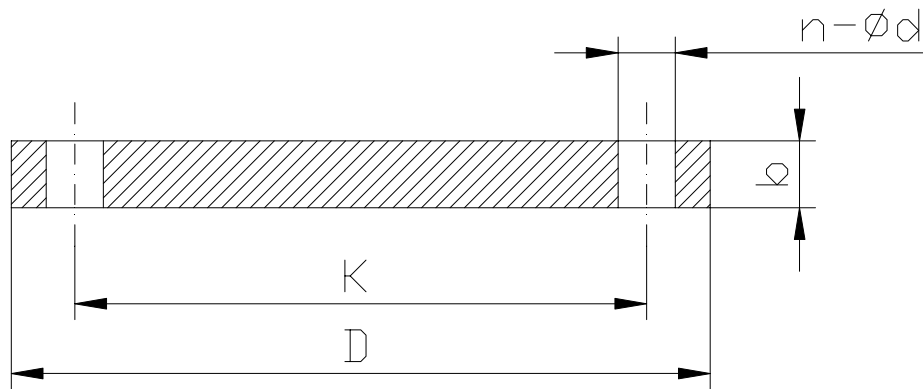
BLIND FLANGE, PN25

NORME PRODOTTO:
MATERIALI:

EN 1092-1-5
Acciaio al carbonio

PRODUCT STANDARDS:
MATERIALS:

EN 1092-1-5
Carbon steel



DN	K	D	n-ød	b	VITE SCREW	PESO kg WEIGHT
15	65	95	4-14	16	M12	1.0
20	75	105	4-14	18	M12	1.0
25	85	115	4-14	18	M12	1.5
32	100	140	4-18	18	M16	2.0
40	110	150	4-18	18	M16	2.5
50	125	165	4-18	20	M16	3.0
65	145	185	8-18	22	M16	4.5
80	160	200	8-18	24	M16	5.5
100	190	235	8-22	24	M20	7.5
125	220	270	8-26	26	M24	11.0
150	250	300	8-26	28	M24	14.5
200	310	360	12-26	30	M24	22.6
250	370	425	12-30	32	M27	33.5
300	430	485	16-30	34	M27	46.3
350	490	555	16-33	38	M30	62.1
400	550	620	16-36	40	M33	78.7
450	600	670	20-36	50	M33	120.0
500	660	730	20-36	51	M33	136.0

FLANGIA CIECA, PN40

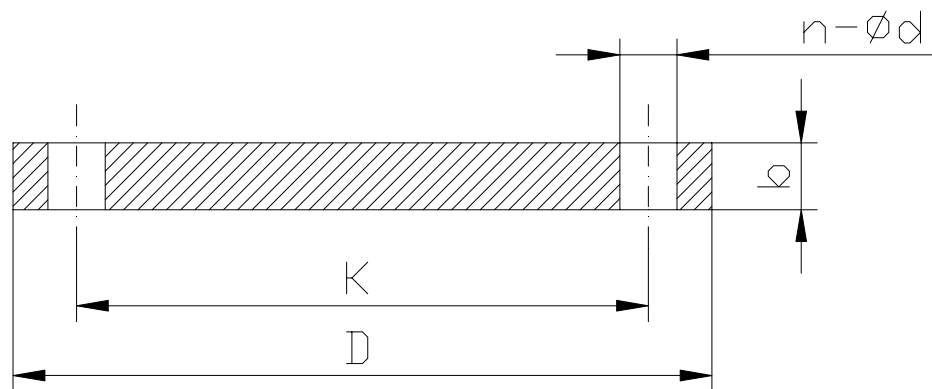
BLIND FLANGE, PN40

NORME PRODOTTO:
MATERIALI:

EN 1092-1-5
Acciaio al carbonio

PRODUCT STANDARDS:
MATERIALS:

EN 1092-1-5
Carbon steel



DN	K	D	n-ød	b	VITE SCREW	PESO kg WEIGHT
15	65	95	4-14	16	M12	1.0
20	75	105	4-14	18	M12	1.0
25	85	115	4-14	18	M12	1.5
32	100	140	4-18	18	M16	2.0
40	110	150	4-18	18	M16	2.5
50	125	165	4-18	20	M16	3.0
65	145	185	8-18	22	M16	4.5
80	160	200	8-18	24	M16	5.5
100	190	235	8-22	24	M20	7.5
125	220	270	8-26	26	M24	11.0
150	250	300	8-26	28	M24	14.5
200	320	375	12-30	36	M27	29.0
250	385	450	12-33	38	M30	44.5
300	450	515	16-33	42	M30	56.0
350	510	580	16-36	46	M33	76.5
400	585	660	16-39	50	M36	106.0
450	610	685	20-39	57	M36	134.0
500	670	755	20-42	57	M39	148.0