

FLANGIA PIANA A SALDARE, PN10

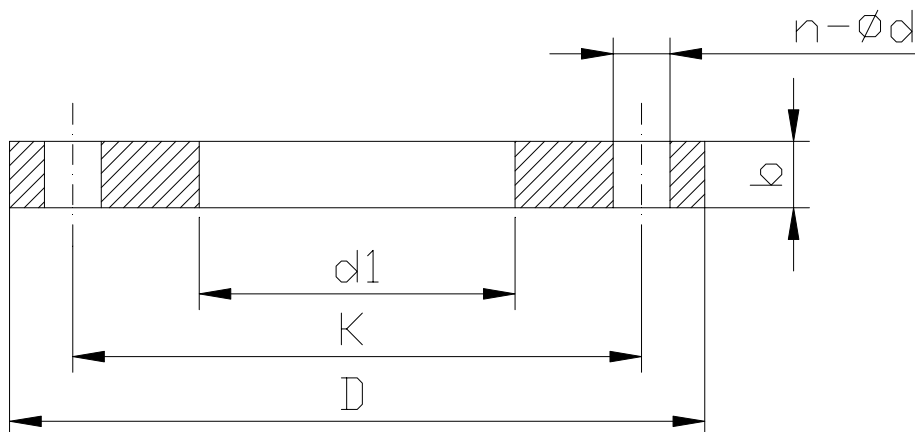
WELDING FLANGE, PN10

NORME PRODOTTO:
MATERIALI:

EN 1092-1-1
Acciaio al carbonio

PRODUCT STANDARDS:
MATERIALS:

EN 1092-1-1
Carbon steel



| DN | øTUBO-PIPE ISO | d1 ISO | K | D | n-ød | b | VITE SCREW | PESO kg WEIGHT |
|------|-------------------|-----------|------|------|-------|----|---------------|-------------------|
| 15 | 21.3 | 22 | 65 | 95 | 4-14 | 14 | M12 | 0.5 |
| 20 | 26.9 | 27.5 | 75 | 105 | 4-14 | 16 | M12 | 1.0 |
| 25 | 33.7 | 34.5 | 85 | 115 | 4-14 | 16 | M12 | 1.0 |
| 32 | 42.4 | 43.5 | 100 | 140 | 4-18 | 18 | M16 | 2.0 |
| 40 | 48.3 | 49.5 | 110 | 150 | 4-18 | 18 | M16 | 2.0 |
| 50 | 60.3 | 61.5 | 125 | 165 | 4-18 | 20 | M16 | 2.5 |
| 65 | 76.1 | 77.5 | 145 | 185 | 8-18 | 20 | M16 | 3.0 |
| 80 | 88.9 | 90.5 | 160 | 200 | 8-18 | 20 | M16 | 3.5 |
| 100 | 114.3 | 115.5 | 180 | 220 | 8-18 | 22 | M16 | 4.5 |
| 125 | 139.7 | 141.5 | 210 | 250 | 8-18 | 22 | M16 | 5.5 |
| 150 | 168.3 | 170.5 | 240 | 285 | 8-22 | 24 | M20 | 7.0 |
| 200 | 219.1 | 221.5 | 295 | 340 | 8-22 | 24 | M20 | 9.5 |
| 250 | 273 | 276.5 | 350 | 395 | 12-22 | 26 | M20 | 12.0 |
| 300 | 323.9 | 327.5 | 400 | 445 | 12-22 | 26 | M20 | 13.5 |
| 350 | 355.6 | 359.5 | 460 | 505 | 16-22 | 30 | M20 | 22.5 |
| 400 | 406.4 | 411 | 515 | 565 | 16-26 | 32 | M24 | 27.5 |
| 450 | 457.2 | 462 | 565 | 615 | 20-26 | 36 | M24 | 33.5 |
| 500 | 508 | 513.5 | 620 | 670 | 20-26 | 38 | M24 | 40.0 |
| 600 | 609.6 | 616.5 | 725 | 780 | 20-30 | 42 | M27 | 54.5 |
| 700 | 711.2 | 714.2 | 840 | 895 | 24-30 | 50 | M27 | 85.0 |
| 800 | 812.8 | 815.8 | 950 | 1015 | 24-33 | 56 | M30 | 123.0 |
| 900 | 914.4 | 917.4 | 1050 | 1115 | 28-33 | 62 | M30 | 143.0 |
| 1000 | 1016 | 1019 | 1160 | 1230 | 28-36 | 70 | M33 | 204.0 |

FLANGIA PIANA A SALDARE, PN16

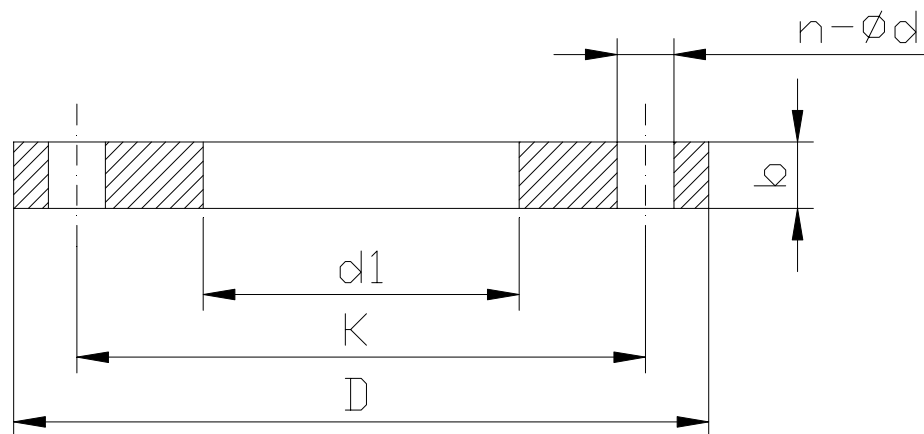
WELDING FLANGE, PN16

NORME PRODOTTO:
MATERIALI:

EN 1092-1-1
Acciaio al carbonio

PRODUCT STANDARDS:
MATERIALS:

EN 1092-1-1
Carbon steel



| DN | ØTUBO-PIPE ISO | d1 ISO | K | D | n-ød | b | VITE SCREW | PESO kg WEIGHT |
|------|-------------------|-----------|------|------|-------|----|---------------|-------------------|
| 15 | 21.3 | 22 | 65 | 95 | 4-14 | 14 | M12 | 0.5 |
| 20 | 26.9 | 27.5 | 75 | 105 | 4-14 | 16 | M12 | 1.0 |
| 25 | 33.7 | 34.5 | 85 | 115 | 4-14 | 16 | M12 | 1.0 |
| 32 | 42.4 | 43.5 | 100 | 140 | 4-18 | 18 | M16 | 2.0 |
| 40 | 48.3 | 49.5 | 110 | 150 | 4-18 | 18 | M16 | 2.0 |
| 50 | 60.3 | 61.5 | 125 | 165 | 4-18 | 20 | M16 | 2.5 |
| 65 | 76.1 | 77.5 | 145 | 185 | 8-18 | 20 | M16 | 3.0 |
| 80 | 88.9 | 90.5 | 160 | 200 | 8-18 | 20 | M16 | 3.5 |
| 100 | 114.3 | 115.5 | 180 | 220 | 8-18 | 22 | M16 | 4.5 |
| 125 | 139.7 | 141.5 | 210 | 250 | 8-18 | 22 | M16 | 5.5 |
| 150 | 168.3 | 170.5 | 240 | 285 | 8-22 | 24 | M20 | 7.0 |
| 200 | 219.1 | 221.5 | 295 | 340 | 12-22 | 26 | M20 | 9.5 |
| 250 | 273 | 276.5 | 355 | 405 | 12-26 | 29 | M24 | 14.0 |
| 300 | 323.9 | 327.5 | 410 | 460 | 12-26 | 32 | M24 | 19.0 |
| 350 | 355.6 | 359.5 | 470 | 520 | 16-26 | 35 | M24 | 28.0 |
| 400 | 406.4 | 411 | 525 | 580 | 16-30 | 38 | M27 | 36.0 |
| 450 | 457.2 | 462 | 585 | 640 | 20-30 | 42 | M27 | 46.0 |
| 500 | 508 | 513.5 | 650 | 715 | 20-33 | 46 | M30 | 64.0 |
| 600 | 609.6 | 616.5 | 770 | 840 | 20-36 | 55 | M33 | 96.0 |
| 700 | 711.2 | 714.2 | 840 | 910 | 24-36 | 63 | M33 | 120.0 |
| 800 | 812.8 | 815.8 | 950 | 1025 | 24-39 | 74 | M36 | 185.0 |
| 900 | 914.4 | 917.4 | 1050 | 1125 | 28-39 | 82 | M36 | 205.0 |
| 1000 | 1016 | 1019 | 1170 | 1255 | 28-42 | 90 | M39 | 288.0 |

FLANGIA PIANA A SALDARE, PN25

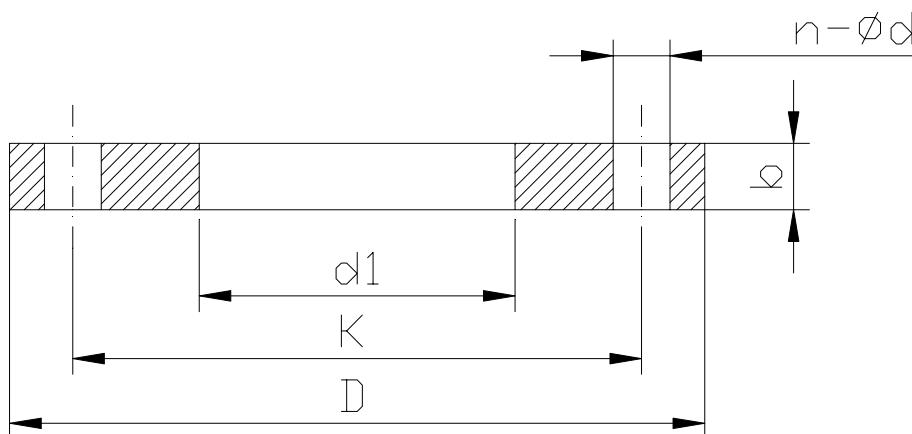
WELDING FLANGE, PN25

NORME PRODOTTO:
MATERIALI:

EN 1092-1-1
Acciaio al carbonio

PRODUCT STANDARDS:
MATERIALS:

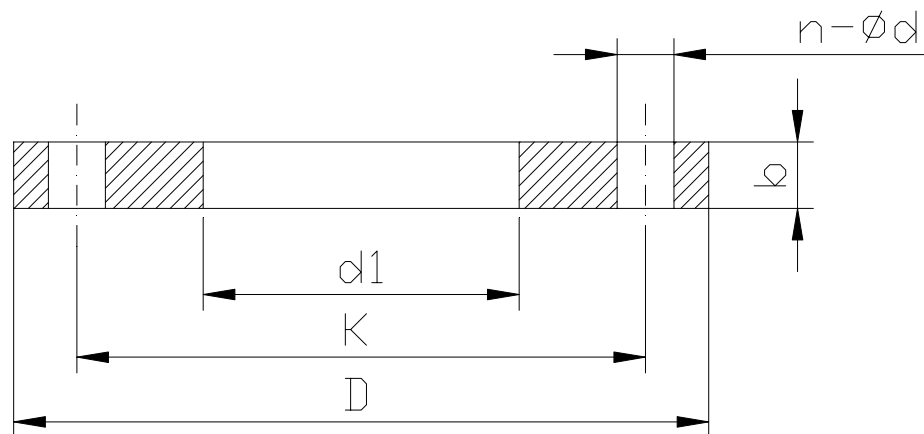
EN 1092-1-1
Carbon steel



| DN | øTUBO-PIPE ISO | d1 ISO | K | D | n-ød | b | VITE SCREW | PESO kg WEIGHT |
|-----|-------------------|-----------|-----|-----|-------|----|---------------|-------------------|
| 15 | 21.3 | 22 | 65 | 95 | 4-14 | 14 | M12 | 0.6 |
| 20 | 26.9 | 27.5 | 75 | 105 | 4-14 | 16 | M12 | 1.0 |
| 25 | 33.7 | 34.5 | 85 | 115 | 4-14 | 16 | M12 | 1.0 |
| 32 | 42.4 | 43.5 | 100 | 140 | 4-18 | 18 | M16 | 2.0 |
| 40 | 48.3 | 49.5 | 110 | 150 | 4-18 | 18 | M16 | 2.0 |
| 50 | 60.3 | 61.5 | 125 | 165 | 4-18 | 20 | M16 | 2.5 |
| 65 | 76.1 | 77.5 | 145 | 185 | 8-18 | 22 | M16 | 3.5 |
| 80 | 88.9 | 90.5 | 160 | 200 | 8-18 | 24 | M16 | 4.5 |
| 100 | 114.3 | 115.5 | 190 | 235 | 8-22 | 26 | M20 | 6.0 |
| 125 | 139.7 | 141.5 | 220 | 270 | 8-26 | 28 | M24 | 8.0 |
| 150 | 168.3 | 170.5 | 250 | 300 | 8-26 | 30 | M24 | 10.5 |
| 200 | 219.1 | 221.5 | 310 | 360 | 12-26 | 32 | M24 | 14.5 |
| 250 | 273 | 276.5 | 370 | 425 | 12-30 | 35 | M27 | 20.0 |
| 300 | 323.9 | 327.5 | 430 | 485 | 16-30 | 38 | M27 | 26.5 |
| 350 | 355.6 | 359.5 | 490 | 555 | 16-33 | 42 | M30 | 42.0 |
| 400 | 406.4 | 411 | 550 | 620 | 16-36 | 48 | M33 | 55.0 |
| 450 | 457.2 | 462 | 600 | 670 | 20-36 | 54 | M33 | 70.5 |
| 500 | 508 | 513.5 | 660 | 730 | 20-36 | 58 | M33 | 84.0 |
| 600 | 609.6 | 616.5 | 770 | 845 | 20-39 | 68 | M36 | 127.5 |

FLANGIA PIANA A SALDARE, PN40

WELDING FLANGE, PN40

NORME PRODOTTO:
MATERIALI:EN 1092-1-1
Acciaio al carbonioPRODUCT STANDARDS:
MATERIALS:EN 1092-1-1
Carbon steel

| DN | øTUBO-PIPE ISO | d1 ISO | K | D | n-ød | b | VITE SCREW | PESO kg WEIGHT |
|-----|-------------------|-----------|-----|-----|-------|----|---------------|-------------------|
| 15 | 21.3 | 22 | 65 | 95 | 4-14 | 14 | M12 | 0.6 |
| 20 | 26.9 | 27.5 | 75 | 105 | 4-14 | 16 | M12 | 1.0 |
| 25 | 33.7 | 34.5 | 85 | 115 | 4-14 | 16 | M12 | 1.0 |
| 32 | 42.4 | 43.5 | 100 | 140 | 4-18 | 18 | M16 | 2.0 |
| 40 | 48.3 | 49.5 | 110 | 150 | 4-18 | 18 | M16 | 2.0 |
| 50 | 60.3 | 61.5 | 125 | 165 | 4-18 | 20 | M16 | 2.5 |
| 65 | 76.1 | 77.5 | 145 | 185 | 8-18 | 22 | M16 | 3.5 |
| 80 | 88.9 | 90.5 | 160 | 200 | 8-18 | 24 | M16 | 4.5 |
| 100 | 114.3 | 115.5 | 190 | 235 | 8-22 | 26 | M20 | 6.0 |
| 125 | 139.7 | 141.5 | 220 | 270 | 8-26 | 28 | M24 | 8.0 |
| 150 | 168.3 | 170.5 | 250 | 300 | 8-26 | 30 | M24 | 10.5 |
| 200 | 219.1 | 221.5 | 320 | 375 | 12-30 | 36 | M27 | 18.0 |
| 250 | 273 | 276.5 | 385 | 450 | 12-33 | 42 | M30 | 29.5 |
| 300 | 323.9 | 327.5 | 450 | 515 | 16-33 | 52 | M30 | 46.5 |
| 350 | 355.6 | 359.5 | 510 | 580 | 16-36 | 58 | M33 | 67.0 |
| 400 | 406.4 | 411 | 585 | 660 | 16-39 | 65 | M36 | 97.5 |
| 450 | 457.2 | 462 | 610 | 685 | 20-39 | 66 | M36 | 91.5 |
| 500 | 508 | 513.5 | 670 | 755 | 20-42 | 72 | M39 | 120.5 |
| 600 | 609.6 | 616.5 | 795 | 890 | 20-48 | 84 | M45 | 189.5 |