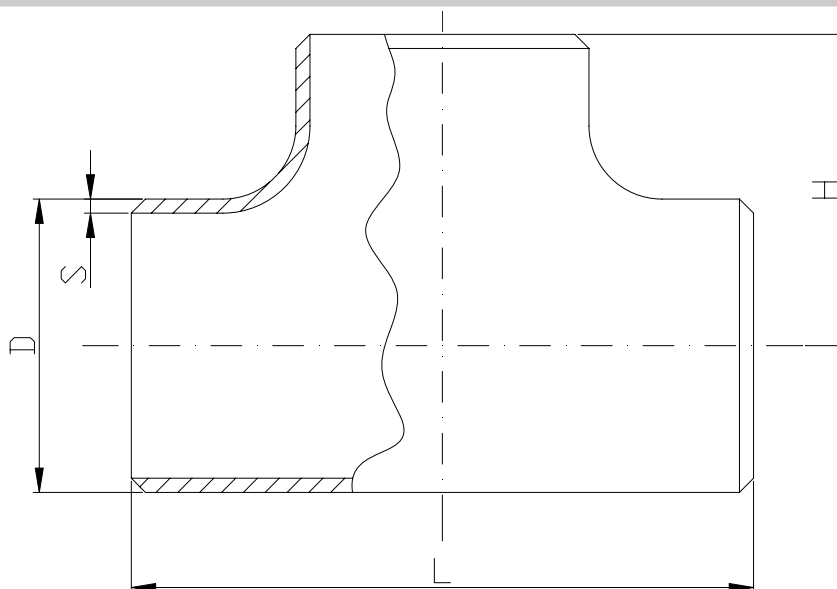


## TEE SENZA SALDATURA

## SEAMLESS TEES



**ACCIAIO:** St 35.8/l  
**DIMENSIONI:** DIN 2616/2 - DIN 2609  
**STEEL:** St 35.8/l  
**DIMENSIONS:** DIN 2616/2 - DIN 2609

DN	D	S	L	H	Peso (kg) Weight
15	21.3	2.0	50	25	0.09
20	26.9	2.3	58	29	0.15
25	33.7	2.6	76	38	0.25
32	42.4	2.6	96	48	0.47
40	48.3	2.6	114	57	0.68
50	60.3	2.9	128	64	1.10
65	76.1	2.9	152	76	1.50
80	88.9	3.2	172	86	2.20
100	114.3	3.6	210	105	4.30
125	139.7	4.0	248	124	6.20
150	168.3	4.5	286	143	9.00
200	219.1	6.3	356	178	19.70
250	273.0	6.3	432	216	26.20
300	323.9	7.1	508	254	49.00