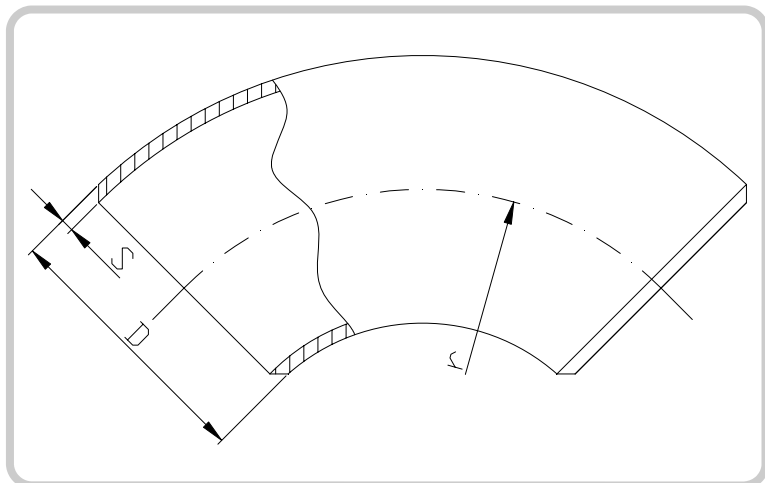


Art. 034002

Art. 034004 - SS

## CURVA SALDATA A 90° IN ACCIAIO, DIMA 3

WELDED ELBOW 90°, STEEL, DIMA 3

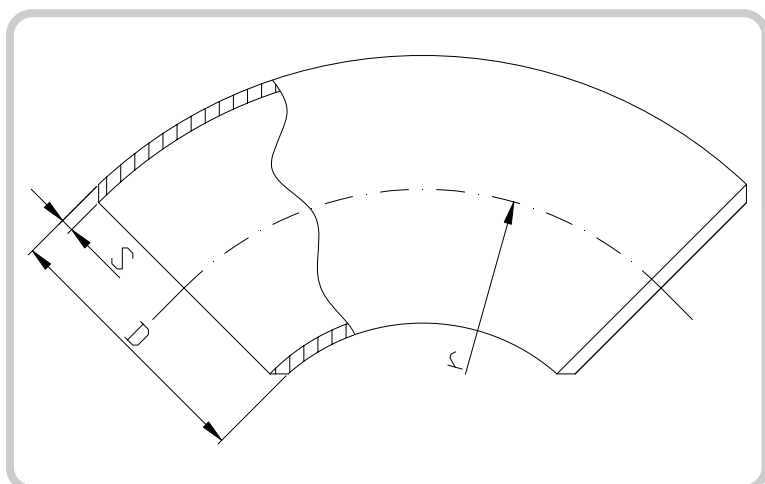


**ACCIAIO:** St 37.0 R  
**DIMENSIONI:** DIN 2605/1-DIN 2609-EN 10253 parte 1  
**STEEL:** St 37.0 R  
**DIMENSIONS:** DIN 2605/1-DIN 2609-EN 10253-1

DN	D	S	r	Peso (kg) Weight
20	26.9	2.0	29	0.06
25	33.7	2.3	38	0.12
32	42.4	2.6	48	0.19
40	48.3	2.6	57	0.26
50	60.3	2.9	76	0.49
65	76.1	2.9	95	0.78
80	88.9	3.2	114	1.22
100	114.3	3.6	152	2.36
125	139.7	4.0	190	4.0
150	168.3	4.5	229	6.5
200	219.1	4.5	305	11.4
250	273	5.0	381	19.8
300	323.9	5.6	457	31.6
350	355.6	5.6	533	40.5
400	406.4	6.3	610	59.7
450	457.2	6.3	686	76
500	508	6.3	762	93.5
600	609.6	6.3	914	133

## CURVA SENZA SALDATURE A 90° IN ACCIAIO, DIMA 3

SEAMLESS ELBOW 90°, STEEL, DIMA 3



**ACCIAIO:** S 235  
**DIMENSIONI:** EN 10253 parte 1  
**STEEL:** S 235  
**DIMENSIONS:** EN 10253-1

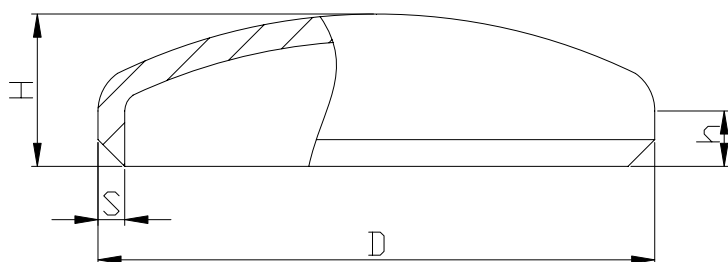
DN	D	S	r	Peso (kg) Weight
20	26.9	2.3	29	0.06
25	33.7	2.6	38	0.12
32	42.4	2.6	48	0.19
40	48.3	2.6	57	0.26
50	60.3	2.9	76	0.49
65	76.1	2.9	95	0.78
80	88.9	3.2	114	1.22
100	114.3	3.6	152	2.36
125	139.7	4.0	190	4.0
150	168.3	4.5	229	6.5
200	219.1	6.3	305	15.8
250	273	6.3	381	24.8
300	323.9	7.1	457	39.8
350	355.6	8.0	533	57.5
400	406.4	8.8	610	82.6
450	457.2	10.0	686	119
500	508	11.0	762	161
600	609.6	12.5	914	266

Art. 034008

Art. 034010

## FONDO BOMBATO

CAP



DN	D	S	H	h	Peso (kg) Weight
20	26.9	2.3	11	4	0.03
25	33.7	2.3	11	4	0.04
32	42.4	2.6	11	4	0.05
40	48.3	2.6	11.5	4	0.08
50	60.3	2.9	16.5	6	0.10
65	76.1	2.9	18.5	6	0.18
80	88.9	3.2	23.0	8	0.22
100	114.3	3.6	26.0	8	0.50
125	139.7	4.0	35.5	12	0.72
150	168.3	4.5	44.5	15	1.10
200	219.1	6.3	68.5	30	2.3
250	273	6.3	90.0	40	5.0
300	323.9	7.1	99.0	40	8.0

ACCIAIO: Lamiera in Acciaio S 235

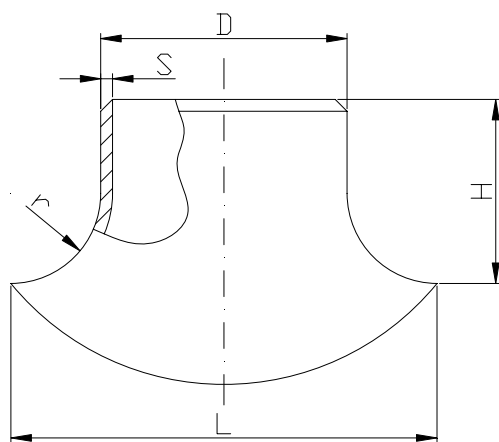
DIMENSIONI: EN 10253 parte 1

STEEL: Plate Steel S 235

DIMENSIONS: EN 10253-1

## INNESTO A SCARPA

COUPLING SADDLE



DN	D	S	r	H	L	Peso (kg) Weight
25	33.7	2.6	11	30	56	0.08
32	42.4	2.6	16	35	75	0.13
40	48.3	2.6	18	40	85	0.18
50	60.3	2.9	22	45	105	0.27
65	76.1	2.9	32	50	142	0.45
80	88.9	3.2	37	60	164	0.68
100	114.3	3.6	40	65	198	1.11
125	139.7	4.0	55	85	250	1.89
150	168.3	4.5	60	100	290	2.86
200	219.1	6.3	75	135	375	6.42
250	273	6.3	90	150	460	9.98
300	323.9	7.1	110	175	560	15.85

ACCIAIO: St 35.8/I

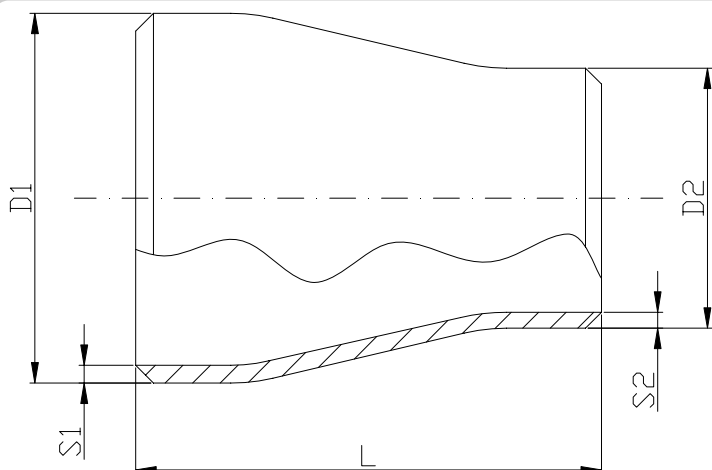
DIMENSIONI: DIN 2618

STEEL: St 35.8/I

DIMENSIONS: DIN 2618

## RIDUZIONI CONCENTRICHE SENZA SALDATURA

## SEAMLESS CONCENTRIC REDUCERS

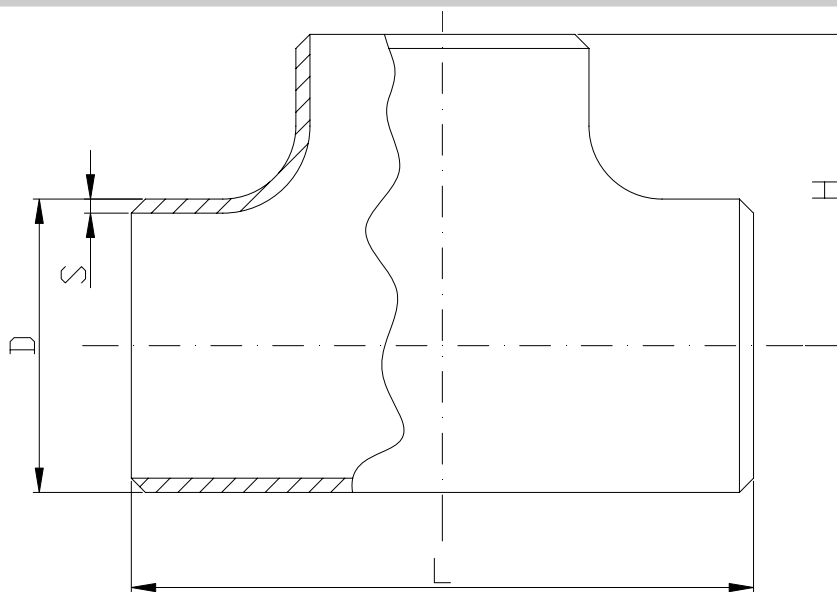


**ACCIAIO:** St 35.8/l  
**DIMENSIONI:** DIN 2616/2 - DIN 2609  
**STEEL:** St 35.8/l  
**DIMENSIONS:** DIN 2616/2 - DIN 2609

DN1	DN2	D1	D2	S1	S2	L	Peso (kg) Weight
25	20	33.7	26.9	2.6	2.3	50	0.09
32	20	42.4	26.9	2.6	2.3	50	0.13
	25	42.4	33.7	2.6	2.6	50	0.14
40	20	48.3	26.9	2.6	2.3	64	0.19
	25	48.3	33.7	2.6	2.6	64	0.20
	32	48.3	42.4	2.6	2.6	64	0.20
50	25	60.3	33.7	2.9	2.6	76	0.31
	32	60.3	42.4	2.9	2.6	76	0.32
	40	60.3	48.3	2.9	2.6	76	0.33
65	32	76.1	42.4	2.9	2.6	90	0.47
	40	76.1	48.3	2.9	2.6	90	0.48
	50	76.1	60.3	2.9	2.9	90	0.49
80	40	88.9	48.3	3.2	2.6	90	0.61
	50	88.9	60.3	3.2	2.9	90	0.62
	65	88.9	76.1	3.2	2.9	90	0.63
100	50	114.3	60.3	3.6	2.9	100	0.98
	65	114.3	76.1	3.6	2.9	100	1.00
	80	114.3	88.9	3.6	3.2	100	1.00
125	65	139.7	76.1	4.0	2.9	127	1.70
	80	139.7	88.9	4.0	3.2	127	1.74
	100	139.7	114	4.0	3.6	127	1.76
150	80	168.3	88.9	4.5	3.2	140	2.7
	100	168.3	114.3	4.5	3.6	140	2.82
	125	168.3	139.7	4.5	4.0	140	2.94
200	100	219.1	114.3	6.3	3.6	152	5.03
	125	219.1	139.7	6.3	3.6	152	5.12
	150	219.1	168.3	6.3	4.5	152	5.18
250	150	273	168.3	6.3	4.5	178	7.40
	200	273	219.1	6.3	6.3	178	7.55
300	200	323.9	219.1	7.1	6.3	203	11.50
	250	323.9	273	7.1	6.3	203	11.90
350	250	355.6	273	8.0	6.3	330	23.00
	300	355.6	323.9	8.0	7.1	330	23.50
400	250	406.4	273	8.8	6.3	355	31.40
	300	406.4	323.9	8.8	7.1	355	32.20

## TEE SENZA SALDATURA

## SEAMLESS TEES



**ACCIAIO:** St 35.8/1  
**DIMENSIONI:** DIN 2616/2 - DIN 2609  
**STEEL:** St 35.8/1  
**DIMENSIONS:** DIN 2616/2 - DIN 2609

DN	D	S	L	H	Peso (kg) Weight
15	21.3	2.0	50	25	0.09
20	26.9	2.3	58	29	0.15
25	33.7	2.6	76	38	0.25
32	42.4	2.6	96	48	0.47
40	48.3	2.6	114	57	0.68
50	60.3	2.9	128	64	1.10
65	76.1	2.9	152	76	1.50
80	88.9	3.2	172	86	2.20
100	114.3	3.6	210	105	4.30
125	139.7	4.0	248	124	6.20
150	168.3	4.5	286	143	9.00
200	219.1	6.3	356	178	19.70
250	273.0	6.3	432	216	26.20
300	323.9	7.1	508	254	49.00